

Horsham District Crime
and Disorder
Reduction Partnership

STRATEGIC ASSESSMENT

Informing the Horsham
District CDRP Partnership
Plan 2008-2011

Lead Officer: Mike Rumble
Community Safety Manager
Horsham District Council

FINAL VERSION FEB08



Horsham Strategic Assessment 2007/08

Executive summary

This Strategic Assessment has been produced for the Horsham Responsible Authorities Partnership in accordance with new statutory regulations, accompanying guidance and the Home Office effective practice toolkit. It identifies seven priorities which tackled together have the potential to reduce crime, disorder, anti-social behaviour, substance misuse and fear of crime in Horsham. These priorities, in no order of importance, are:

1. Acquisitive crime, particularly burglary, theft and robbery.
2. Road traffic crashes and casualties
3. Anti-social behaviour, in particular prevention and behaviour change interventions
4. Serious violent crime, including domestic violence
5. Alcohol and drug-related crime and disorder, including public place violent crime (PPVC) and criminal damage
6. Street scene issues
7. Fear of crime and public reassurance

The priorities, once agreed, will inform the 2008/11 Horsham Community Safety Partnership Plan. This plan will be reviewed and revised annually based through a refreshed strategic assessment.

The strategic assessment will also inform the development of the West Sussex Local Area Agreement, the Horsham and West Sussex Sustainable Community Strategy and the West Sussex Community Safety Agreement.

With regard to the latter, the following should be considered for inclusion in the community safety agreement and can be summarised as the development, delivery and coordination of services in relation to:

1. Road traffic crashes and casualties
2. Anti-social behaviour, in particular prevention and behaviour change interventions
3. Domestic violence, including Multi-Agency Risk Assessment Conferences and sexual violence
4. Alcohol and drug-related crime, in particular PPVC and criminal damage
5. Street scene issues
6. Fear of crime and public reassurance

No attempt has been made to include within this assessment an analysis of the work being undertaken by either the West Sussex Youth Offending Team or the Drug and Alcohol Action Team. The work of these teams will be informed next year by the publication of a new Youth Crime Action Plan and National Drugs Strategy. However, the outcome of their activity will be included in the three-year review of the Horsham Community Safety Strategy to be published in 2008.

CONTENTS

| | |
|--|----------------|
| Section 1: Introduction and purpose of assessment | Page 4 |
| Section 2: Headline findings from review of crime and disorder in Horsham | Page 6 |
| Section 3: Potential priorities | Page 11 |
| Section 4: Analysis of potential priorities | Page 13 |
| Section 5: Recommended priorities and activity currently being undertaken | Page 28 |
| Section 6: Gaps in Provision | Page 33 |
| Section 7: Conclusions and next steps | Page 34 |
| Appendices | |

Section 1

Introduction and purpose of the assessment

- 1.1 This Strategic Assessment
- Identifies local patterns, trends and shifts relating to crime & disorder and substance misuse
 - Summarises perceptions and priorities identified by local residents and agencies
 - Analyses this information in order to determine local Crime and Disorder priorities for 2008/9
 - Summarises what actions and initiatives are already in place to address these priorities
 - Assesses the previous partnership plan
- 1.2 It is an internal document to inform the community safety partnership plan and does not need to be published. However, a summary of the partnership action plan must be published by 1 April 2008.
- 1.3 The assessment provides a repository of intelligence and information that will support and inform future assessments, annual reviews and future partnership plans.

The Assessment Team

- 1.4 This assessment was led by
- Mike Rumble, Community Safety Manager, Horsham District Council and assisted by a project team comprising
 - Michelle Partridge, CADDIE Analyst, Sussex Police
 - CI Steve Black, Sussex Police
 - Paul Daley, District Manager, West Sussex Fire and Rescue Service
 - Peter Lawrence, Community Safety Officer, West Sussex County Council
 - Catherine Kironde, West Sussex Primary Care Trust
 - Sue Little, Operations Manager, Saxon Weald
 - Trevor Beadle, Horsham District Council

Methodology, data sources and limitations

- 1.5 Partner information used in the assessment includes :
- CADDIE and Police Incident data
 - North Downs Division Tactical Assessment
 - WSCC Community Safety Data
 - WSCC Trading Standards Data
 - WSCC Highways & Transport Data
 - West Sussex Drugs and Alcohol Action Team (DAAT) data
 - West Sussex Fire & Rescue Service data
 - Joint Action Group (JAG) monthly reports
 - Sussex Police public attitude surveys
 - Horsham District Council Best Value General Survey 2007
 - iQuanta (Home Office Crime Recording system)
 - ENCAMS (the Local Environmental Quality Survey of England).
- 1.6 The data sets were analysed by the lead officer and patterns, trends, 'shifts' and likely 'priorities for action' shared with the broader assessment team.
- 1.7 In view of time constraints (and the desire to use core data which has an element of consistency within the seven independent assessments for each Borough and District in West Sussex) data from Sussex Police, West Sussex Fire, Trading Standards, WSCC Highways and Transport and the Drug & Alcohol Action team (CADDIE data) is based on the period January to September 2007. This data can be found in Appendix A.

Contextual information

- 1.8 With a population of 128,300, the Horsham District partnership area is the second largest of 7 District and Borough Councils within West Sussex, comprising 205 square miles (530 square kilometers). The District is made up of 23 picturesque rural market towns and villages and the tastefully developed historic market town of Horsham.

The District is largely affluent but does have a small number of Lower Super Output Areas (LSOA's – these are geographic sub-divisions of the countries population into areas of 1000-3000 residents) which are below the national median in terms of overall deprivation. Some of these areas are within the most deprived quartile for income deprivation; education, skills and training; access to services or 'living environment' deprivation.

Over the last 20 years the district has also experienced significant housing and population growth. This has resulted in an unusual demographic in some of its rural 'villages'. For example, the population of Southwater has doubled from 5,000 to 10,000 in this period. The new housing has proved particularly attractive to 'new families'. The result is that 36% of Southwater residents are aged 18 or under against a national average of 18%, a County average of 19% and a district average of 23%. This creates specific challenges. Southwater is not unique in the district in facing these challenges.

It should also be noted that house prices in the District are significantly above the national average. The result of this is that the District has a high number of over 18 year olds living at home with parents. These individuals have disproportionately high levels of disposable income but can also be frustrated by the situation. This feeds into the night-time economy, vehicle use and other aspects of social and safety related behaviour.

There is also a small but significant number of young people in the district whose parents will not support them and who may push them out of home. Many of these young people are poorly educated with low levels of income and require significant assistance in finding and retaining accommodation. There is a high correlation between young people with high housing support needs and those young people coming to attention through the Anti Social Behaviour process.

As the speed of housing development looks set to continue for at least another 20 years, and despite the target that all new developments should include 40% affordable housing, the problems associated with these factors look set to continue. Additionally, whilst shopping and leisure facilities are extensive, and there is a good mix of shops, restaurants and pubs throughout the district, the provision of purposeful activity and informal meeting places for teenagers is also likely to remain a challenge.

Although the district suffers relatively low overall levels of crime the above factors are likely to continue to impact on crime and disorder within the district

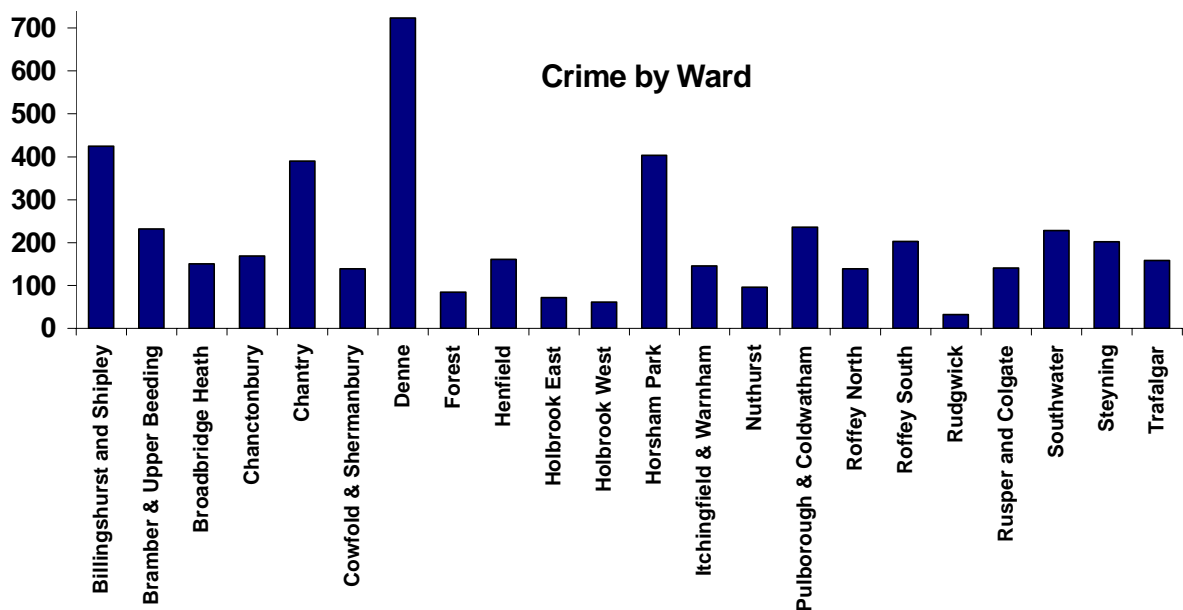
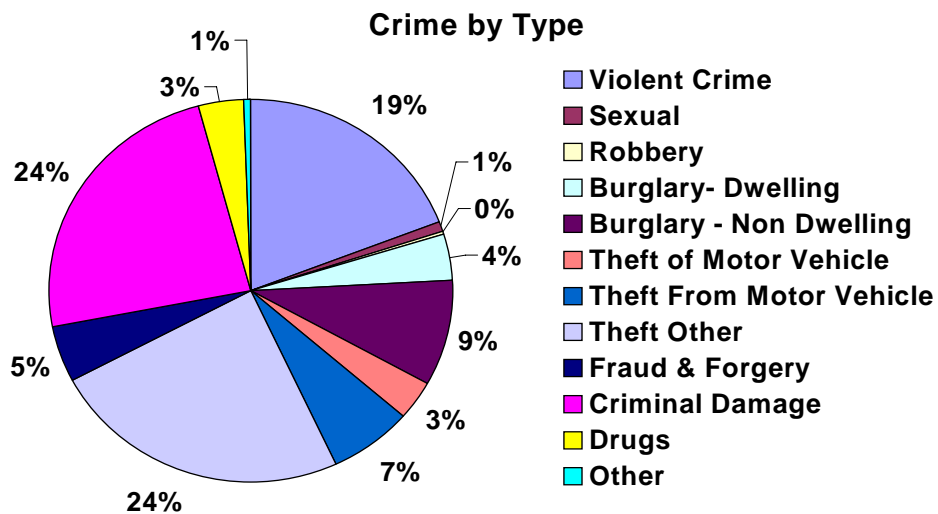
**Section 2
Headline Findings**

Crime and Disorder

2.1 Overall Crime

In the 12 months January to December 2007 total crime **fell by 10.7%** from 6975 crimes in 2006 to 6230 crimes. In the BCS (British Crime Survey) categories which are the crimes upon which CDRP performance is judged by the Home Office they **fell by 13.4%** to 3456 crimes.

These crimes have been broken down by type, and ward, see below.



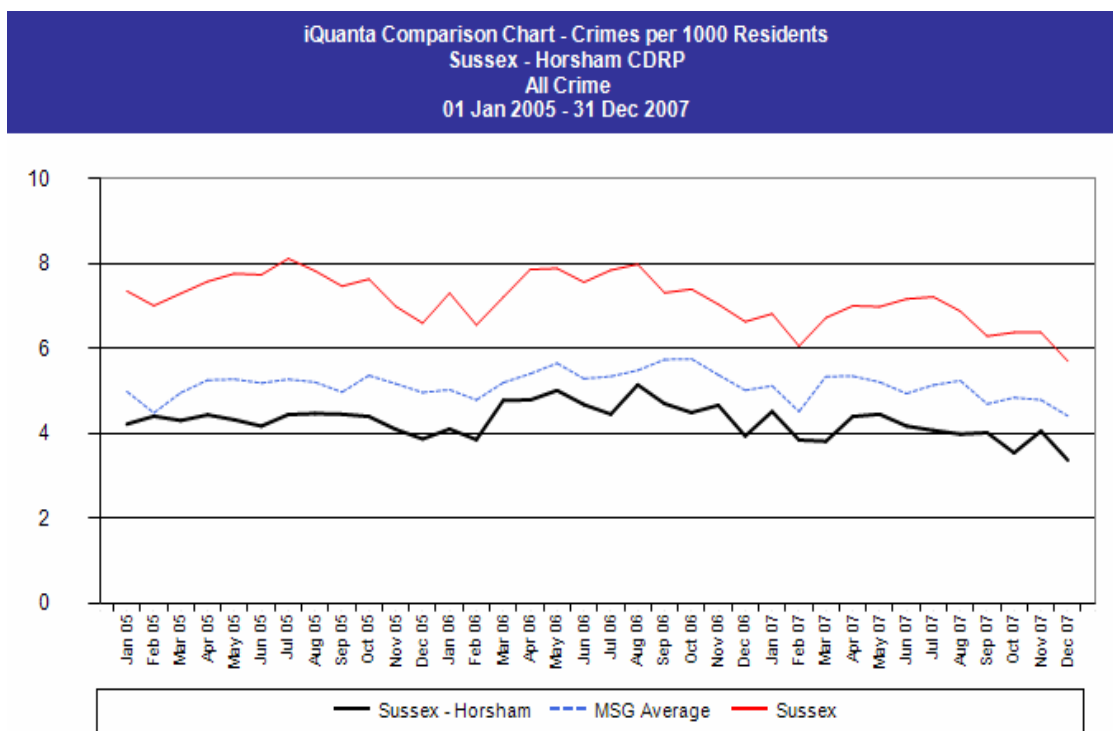
2.2 Crimes increasing

- Burglary (dwelling) increased by 7.2% to 224 offences (15 additional offences from 06)
- Burglary (non-dwelling) increased by 11% to 554 offences (55 additional offences from 06)
- Theft of vehicle increased by 12.9% to 193 offences (22 additional offences from 06)
- Theft from the person increased by 12.9% to 105 offences (12 additional offences from 06)
- Theft from a Shop increased by 11.6% to 385 offences (40 additional offences from 06)
- Robbery increased by 21.7% to 28 offences

2.3 Crimes decreasing

- Theft FROM vehicle decreased by 28.9% to 419 offences.
- Vehicle Interference reduced by 17.9% to 42 offences
- Theft of pedal cycle reduced by 34.6% to 87 offences
- Theft & Handling decreased by 12.2% to 2120 offences
- Fraud & Forgery decreased by 17% to 249 offences
- Arson (criminal damage by fire) decreased by 39.6% to 55 offences
- Criminal damage decreased by 17.7% to 1476 offences
- Business Crime (where a company is the victim) decreased by 6.5% to 2223 offences
- Racist Incidents decreased by 3.6% to 27 offences
- Domestic Violence (Crime) decreased by 8.4% to 327 offences
- Domestic Violence (incidents) decreased by 5.2% to 791 incidents
- Public Place Violent Crime decreased by 13% to 730 offences

2.4 Comparative performance against other areas



Horsham District remains the safest District in West Sussex and in the 'top three' of the fourteen most similar CDRP's (MSG) in the iQuanta tables, which is the rating upon which it is judged by the Home Office. Between 2004 and this date the crime rate has consistently been below that of the Sussex average and the average of our MSCDRP's. The detection rate for North Downs Division for the last six months stands at 32% and was up both year on year and compared with the previous nine months.

Local Environmental Quality Indicators (Cleaner, Safer, Greener)

2.5 The annual Local Environmental Quality Survey of England (LEQSE) provides reliable information on the state of the local environment and provides a detailed picture of how Horsham is performing against national and regional benchmarks on a range of 32 local environmental quality issues, including: litter, detritus, graffiti, fly-posting, condition of highways and street furniture.

2.5 Headlines

Of the 32 indicators (see appendix B for full report) Horsham scores

- 'good' on flytipping, waste placed out, flyposting, litter at bus stops, graffiti and 8 other indicators.
- 'satisfactory' on general litter and 8 other indicators
- 'unsatisfactory' on litter bin cleanliness, carriageway condition and 7 other indicators
- 'poor' on paved obstructions

Road Traffic Collisions

2.6 WSCC Highways and Transport recorded 284 accidents in the District – resulting in 378 casualties. 25 of these casualties were children under 16. 83% of casualties were classified as slight. There were five fatalities.

Paul Daley/Peter Lawrence...I seem to recall that there were more accidents in Horsham than anywhere else in Mid Sussex. Do you have any headline stats that reflect this and show how accidents have increased/decreased over time.

Public Perception and Feedback

2.7 Public Perception has been gauged through a wide range of public contact opportunities such as the Sussex Police Authority Public Consultation Meeting ; Local Strategic Partnership; Local street briefings; Local Action Teams; Signal Crime (SIG) and Joint Action Group (JAG) Meetings; Older and Younger Persons Strategy Groups; Speak Out Event for young people; contact with Parish Clerks and interaction with communities and individuals who have brought matters to the attention of the Community Safety Unit, The Police and our partner agencies.

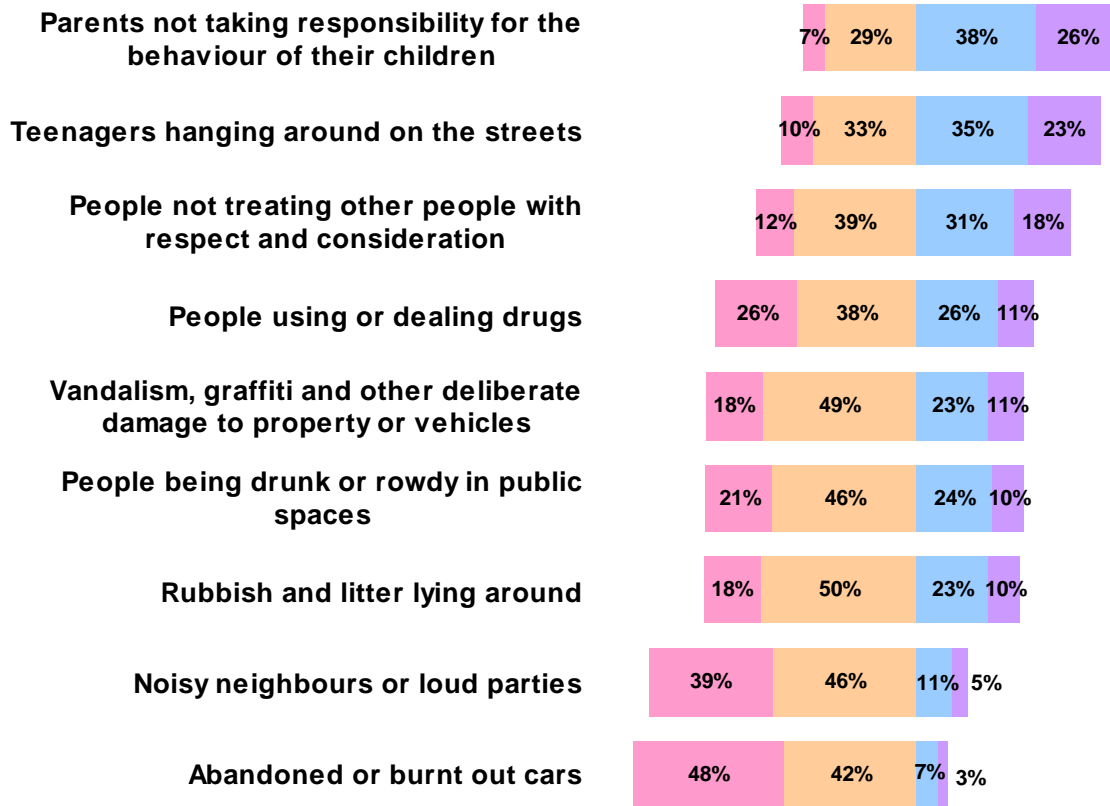
2.8 The last Sussex Policing survey in June 2006 (where 1,000 residents rated the following issues) indicated that the following percentage of people perceived there to be problems as per the below in their area.

- | | |
|--|-----|
| • Speeding Motorists | 76% |
| • Young people hanging about | 61% |
| • Litter & Rubbish | 61% |
| • Dog Fouling | 53% |
| • Vandalism | 53% |
| • Graffiti | 38% |
| • Cycling or skateboarding on pavement | 28% |
| • Noisy Neighbours | 21% |

2.9

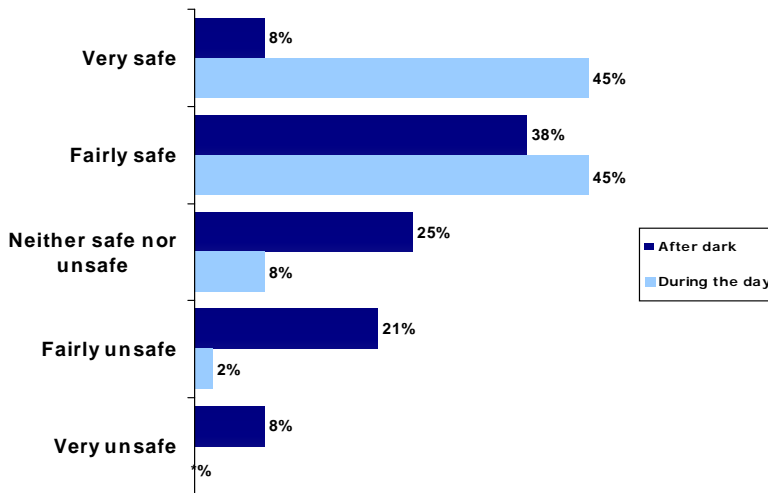
The other key chart from this survey revealed that residents rated problems related to street scene and anti-social behaviour as follows.

Not a problem / Not a very big problem / a fairly big problem / a very big problem



In response to the question “How safe or unsafe do you feel when outside in Horsham at night and during the day? ”, the following responses were elicited:

(QB7/8) How safe or unsafe respondents feel when outside in Horsham at night and during the day (respondents providing a valid response)



BASES VARY
* INDICATES % <0.5

These perception figures (both for day and night) have hardly moved since the 2003 Survey where the same questions were asked and in nearly every public consultation there remains a pressure from the public to see more policemen on the street. The partnership plan should remain cognisant of this pressure within the constraints of finite financial resources.

The concept of an extended police family with limited powers (PCSO's, wardens, uniformed street scene workers) has been supported by residents at meetings but the demand for additional police with powers they are prepared to use is usually voiced at some point.

2.10 Headlines

- Despite being one of the safest places in the country to live the percentage of people feeling unsafe at night in the district has not changed since 2003
- Despite good national performance around litter and other street scene issues residents still perceive there to be problems in this area
- Resident concerns remain polarised around speeding; young people 'hanging about' (not necessarily a crime) and a perceived lack of visible policing.

Additional Interagency Feedback

- 2.11 Horsham District Council has identified a correlation between individuals engaged in Anti-Social Behaviour and individuals on the housing register in need of intensive supported housing.

Headline

In November 2007 a study identified that 10 of the 11 individuals listed as in need of intensive support packages in order to hold down a tenancy had also been targeted by the Anti social Behaviour co-ordinator.

Section 3 Potential Priorities

- 3.1 This strategic assessment seeks to identify the priorities for inclusion in the 2008/11 local community safety partnership plan. With finite resources, it is recognised that some local problems need to be given more attention than others. As such, this assessment is intended to provide sufficient information for the Horsham Responsible Authorities Partnership (RAP) to decide which crime, disorder, anti-social behaviour and substance misuse priorities it should focus on, notwithstanding the developing West Sussex Youth Offending Team and Drug and Alcohol Action Team strategies and action plans.

The priority selection process

- 3.2 The Home Office effective practice toolkit suggests five key aspects of local problems to consider in the prioritisation process, in summary they are:

How big is the problem compared to other problems in the area?

As can be seen from the analysis in Section 2, the most prevalent BCS crimes in Horsham are

- 'Theft other' at 24%
- 'Criminal damage' at 24%;
- 'Violent crime' at 19%

Together they comprise over two-thirds (67%) of all reported BCS crime in Horsham. This crime profile is largely comparable with that of England and Wales as a whole.

How big is the problem in the area compared to other areas?

Within this strategic assessment, comparisons have been made with our iQuanta family of similar CDRPs. These comparisons have been made in relation to All crime, BCS comparator crime, domestic burglary, vehicle crime, violent crime, criminal damage and sexual offences. This provides the Horsham RAP with the opportunity to compare the partnership's relative, as opposed to absolute performance, and allow it to assess whether its crime rates are unacceptably high for the population compared to other similar CDRPs.

What is the harm caused by the problem?

In arriving at the list of emerging priorities, the strategic assessment team took into account the extent to which the problem caused damage, either physically, psychologically, socially, or economically. It is recognised that this to a large extent is a judgement call by the partnership as to whether a problem is affecting a small part of the community, e.g. public place violent crime in the district has reduced by 13% yet remains a relatively high volume crime type affecting night time economy and public perceptions of safety. Continued action is therefore required.

How is the problem changing over time?

This strategic assessment reveals that the BCS crimes which have shown the greatest proportional increase between 2006 and 2007 are

- Burglary (dwelling)
- Burglary (non-dwelling)
- Theft of vehicle
- Theft from the person
- Theft from a Shop
- Robbery
- *RTCs?*

To what extent do the public expect something to be done about the problem?

The priorities which the community themselves want the responsible authorities to tackle are

- Speeding
- young people 'hanging about'/anti-social behaviour
- 'street scene' issues

Public Service Agreements

- 3.3 In the priority selection process the strategic assessment strategy team took into account relevant Public Service Agreements (PSAs) setting out the Government's objectives for public service delivery and explaining how success in delivering those objectives will be measured. There is a single PSA for improving community safety: PSA 23 'Make communities safer', that expects community safety partnerships to:
- Reduce more serious violence, including tackling serious sexual offences
 - Continue to make progress on serious acquisitive crimes through a focus on the issues of greatest priority in each locality
 - Tackle the crime, disorder and anti-social behaviour issues of greatest importance in each locality, increasing confidence in local policing
 - Reduce re-offending
- 3.4 PSA 23 also encourages CDRPs to have a locally determined and auditable Sexual Violence & Abuse Action Plan with relevant local performance indicators.
- 3.5 There are also a number of other PSAs that contribute to delivering community safety and to supporting delivery of the Government's 2008/11 Crime Strategy. The contributing PSAs include:
- PSA 13 Improve children and young people's safety
 - PSA 14 Reduce the number of first-time entrants into the CJS aged 10-17
 - PSA 16 Increase the proportion of socially excluded adults in settled accommodation and employment, education and training
 - PSA 17 Increase the proportion of people over 65 who are satisfied with their home and their neighbourhood
 - PSA 21 Build more cohesive, empowered and active communities
 - PSA 24 Deliver a more effective, transparent and responsive CJS for victims and the public
 - PSA 25 Reduce the harm caused by alcohol and drugs
 - PSA 26 Reduce the risk to the UK from international terrorism
- 3.6 The Government are also intending to issue a number of Actions Plans which include a:
- Neighbourhood Management Action Plan (December 2007)
 - Neighbourhood Management and Neighbourhood Policing Action Plan (January 2008)
 - Staying Safe Action Plan (January 2008)
 - Tackling Violence Action Plan (January 2008)
 - Updated plans for domestic and sexual violence (February 2008)
 - Drugs Strategy (April 2008)
 - Youth Crime Action Plan (April 2008)
- These Action Plans will impact upon the content of the annual action plans for the community safety partnership plan and likely determine delivery mechanisms both locally and at county level.

Section 4 An analysis of potential priorities

The following section considers potential priorities in more detail and includes recommendations in relation to the priorities selected.

Public Place Violent Crime

13% reduction*

PPVC covers a broad range of offences against the person including assault not causing injury, assault occasioning actual bodily harm, public order act offences, affray, rape and racially aggravated offences.

546 offences were committed between January and September. 23% were committed in Denne Ward followed by Horsham Park Ward with 12% and Billingshurst & Shipley with 10%.

Injury only PPVC decreased both year on year and from the previous nine months.

Hotspots tend to be located in the key nightlife centres of the District and Cobra locations, although offence levels in Horsham remain at a low level. The majority of both injury only PPVC victims and offenders were male and aged between 16 and 20 years.

The Home Office iQuanta data does not record PPVC as a whole, but in the category Violent Crime shows an average of 9.95 crimes per 1,000 population in the 12 months to 31st October 2007, which places Horsham District in third safest position in comparison to the other 14 CDRP's in our 'most similar' reference group.

The peak month for PPVC offences was April (75) with the low in May & July (53)

The Town Centre Wards of Denne and Riverside remain the peak areas with Assault occasioning Actual Bodily Harm (ABH) the primary public place offence.

Alcohol Related Incidents

Using the key words 'youths' and 'alcohol' 331 Police incidents were found between January & September. Billingshurst and Shipley Ward contained the greatest number (69) far outpacing the next Ward of Bramber & Upper Beeding (16). However the impact of one specific caller from Station Road, Billingshurst would have ensured these figures remained high during the review period. The location of popular playing fields in Station Road as a youth gathering spot also led to the formation of a specific Local Action Team for this area which is now part of BAIT (Billingshurst Action Initiative Team).

28 reports of underage alcohol sales were reported to Trading Standards and six test purchasing operations were carried out by them. 31 Test purchases were also carried out by the PPVC Team and Police Licensing Unit.

A total of 8 test purchase operations resulted in sales for which the offender received a fixed penalty fine or was taken to court. The positive effect of the District's Pubwatch scheme has resulted in a far better level of compliance and co-operation from licensees in Horsham Town. The Pubwatch scheme is administered from the Community Safety Unit which ensures good liaison between Licensees, the Police and the Council and CDRP. An effective banning system ensures that those customers who have been banned from a specific pub and banned from all 'pubwatch' pubs. Six UHF radio sets are also on loan to the six major town pubs and this also contributes to sharing intelligence and communicating with themselves and the Council's Street Scene Wardens.

The CADDIE analysis gives a summary of alcohol / drug related crime researched using the 'vicinity licensed premises' marker. This marker is an indicator of regarding the scale and locality of the problem.

108 PPVC offences attracted this marker, 20% of the PPVC total.

Shelley's nightclub (now Chameleon Club) attracted the largest cluster of incidents (9 markers) with the Green Dragon attracting (8 markers).

Summary of Recommendations

Comparison of Crime: Violent Crime (including PPVC) accounted for 19% of all crime (with 23% of the total in Denne Ward).

Size of problem: 546 PPVC Offences recorded (9 months) with 61% being assaults

Harm caused: Impact upon health services & police resources especially late evening

Change over time: Patterns very similar over last three years with welcome 13% reduction over last 12 months

Public Expectations: Impacts upon fear of crime, night time economy and public reassurance

Recommend: Sustain current level of investment & monitor changing trends

Criminal Damage

17.7% reduction*

Criminal Damage is an all too visible indicator of anti-social behaviour and the dramatic drop in such offences during the last 12 months is a key indicator that initiatives taken to reduce such behaviour are working. A total of:

- **1096 offences**

were recorded in the nine months under review. 39% of these offences were against vehicles with the majority taking place in Denne and Chantry Wards. The influence of alcohol in occurrences of damage cannot be discounted and all too often damage is discovered 'the morning after the night before'.

The Hotspot map indicates a total of 414 damage offences in Horsham Town with the majority in the Town Centre with a smaller amount occurring in the Roffey area.

Not all offences of criminal damage are reported and repairs to damaged buildings and property are costing Councils and partner agencies thousands of pounds every year.

Saxon Weald Housing spend over £7,500 on repairing damage caused unlawfully on their estate, whilst HDC Housing Department spend over £8,000 (the majority of which occurred to just two flats). Parking Services spent £1,600 on obliterating graffiti and allied damage in the Forum multi-storey car park in one month alone. The Forum Car Park has continued to prove a problem and an arrangement with Sussex Probation Service to paint out graffiti every Monday is now underway.

Whilst graffiti is not a major problem in the District it can occur in fits and starts and on occasions can cover large areas. It can be offensive and makes an area look run down and neglected. Horsham District Council is now party to the "All Clear" protocol which sets maximum time standards for the removal of graffiti on all property, whether public or private.

The peak month for criminal damage was April (145) (179 in April 2006) the lowest was in September (106)

Summary of Recommendations

| | |
|-----------------------------|--|
| Comparison of Crime: | Criminal Damage accounted for 24% of all crime in the District (with 39% of that total being damage to vehicles) |
| Size of problem : | District is second best in our comparator group |
| Harm caused: | Offence does cost society large sums of money & makes areas look run down and neglected – impacts on fear of crime. |
| Change over time: | 17.7% reduction over 12 months is strong indication that initiatives are working, especially those around anti-social behaviour. |
| Public Expectations: | Strong public concern especially around visible damage in public places. |
| Recommend: | Sustain investment at present level and monitor any fluctuations via monthly JAG. Increase level of visible patrolling by HDC Street Scene Team to deter offences especially to public property. |

Vehicle Crime

19.5% reduction*

Vehicle crime appears from the statistics to be more of a rural crime than an urban one in this District, of the:

- **311 'theft from'** and the
- **146 'theft of'** offences

11% took place in Chantry Ward (Storrington & Sullington) closely followed by 8% in Bramber and Upper Beeding. Owing to the spread across the District it is difficult to 'hotspot' particular areas where this type of crime is more prevalent; however our beauty spot car parks continue to attract unwanted attention from vehicle thieves.

A standing Vehicle Crime Group is re-convened whenever a spike in vehicle related theft is apparent. This group is chaired by the Police District Commander. A number of technical aids are available to the police such as 'trap' cars and tracking devices placed in vehicles or property located in vehicles, which activate when stolen and often lead police to thieves and handlers. The growth of ever more sophisticated vehicle security devices does mean that thieves are changing their methods and quite often houses will be burgled in order to steal the keys to high value vehicles parked in their driveway. This can impact upon the type of crime recorded and is likely to lead to an increase in recorded burglaries as well as vehicle crime.

The peak month for vehicle crime was in January (80) with the low in August (30)

Summary of Recommendations

Comparison of Crime: Theft from Vehicle accounted for 7% of all crime and Theft OF vehicle for 3%

Size of problem : District is best in our comparator group for theft (from) and third best for Theft (of)

Harm caused: Under 1 in 1000 population affected by vehicle crime

Change over time: Offence continues to reduce (by 20% over last 12 months)

Public Expectations: Not major concern for community but affects individuals targeted although affect ameliorated by insurance cover.

Recommend: Low priority but continue to deliver crime prevention messages and sustain existing investment. Monitor via SIG and JAG and initiate responses as necessary.

Burglary

Burglary (dwelling) up 7.2%

Burglary (other) up 11% *

Whilst enjoying one of the lowest rates of dwelling burglaries in our MSCDRP group this category has shown a slight increase during the review period.

- **179 dwelling burglaries** were recorded. However this was outweighed by:
- **409 non-dwelling burglaries.**

Traditionally more resources have been devoted to investigating dwelling burglaries as they are likely to have a greater impact upon individuals and families than those occurring at commercial premises. Billingshurst and Shipley showed the greatest rate of non-dwelling burglaries (62) and also recorded 15 dwelling burglaries which amounted to 13% of the total. Horsham Park Ward accounted for the most dwelling burglaries (19). Burglary peaked in January with 92 offences recorded (41 in April 2006) with the lowest rate in August (49). The spread of burglaries across the District reflects population trends with Billingshurst and Chantry Wards showing a disproportionate increase.

Further analysis needs to be done on the non-dwelling burglary incidents to see whether crime prevention opportunities can be identified and whether there is any similarity in the type of 'non-dwelling' premises attacked. (It should be noted that non-dwelling will include thefts from garden sheds, garages, stables and outhouses).

The burglary detection rate for North Downs Division for the six months to September 2007 was 23%.

The peak month for burglary was January (92) (41 in January 2006) with the low in June (42). Additional resources have been provided by Sussex Police to strengthen investigative capacity in this area.

Summary of Recommendations

| | |
|-----------------------------|---|
| Comparison of Crime: | Burglary (dwelling) accounted for 4% of all crime whilst burglary (non-dwelling) amounted to 9%. |
| Size of problem : | Horsham is second best in our comparator group (domestic burglary) and middle ranking for non-domestic. |
| Harm caused: | Burglary is perceived as more of an offence against individuals than against property and can adversely affect victims (especially older victims) for considerable periods. |
| Change over time: | A 7.2% increase in domestic burglary and an 11% increase in burglary (other) over 12 months is one of the few ascending crimes in the District and whilst actual number are low impact is high. |
| Public Expectations: | Public are concerned about burglary and it impacts upon the fear of crime – that fear is heightened by the invasion of privacy and effect upon victims. |
| Recommend : | High priority to reduce level of offences and increase home security advice to householders. Increase advice to businesses and victims of non-domestic burglary. |

Robbery

With only 28 offences recorded over 12 months the robbery rate in the District is exactly the average of our comparison group. The impact on individual victims is high with some affects lasting for a lifetime. The offence is random and difficult to predict without specific intelligence.

Summary of Recommendations

Comparison of Crime: Robbery accounted for under 1% of all crime

Size of problem : Horsham District ranks at the mid-point with our comparator CDRP's

Harm caused: Major impact upon individual victims and their families

Change over time: Small increase on 2006

Public Expectations: Most robberies are high profile and attract considerable publicity which impacts upon Fear of crime and public reassurance.

Recommend : **High priority** to deter offenders by personal and business safety advice.
Robust investigation of individual offences and monitoring of any trends emerging.

Doorstep Crime

Doorstep crime includes incidents reported to WSCC Trading Standards as well as the Police. These incidents include bogus callers, fraudulent traders, or persons charging excessive amounts for simple tasks:

- **21 Distraction burglaries**

were recorded during the review period, 5 occurring in Horsham Park Ward. No other Ward suffered from more than two such crimes.

- **65 incidents of suspicious doorstep callers**

were recorded with the greatest number of reports coming from Chantry Ward (9), Chanctonbury (8) and Horsham Park (7)

The vast majority of victims of these offences are over the age of 65 years. North Downs Division are currently reviewing 3½ years worth of data where crime victims were 75 or over. Whilst this age group represented only 2% of victims during this period, this section of society are clearly one of the most vulnerable with the impact of crime likely to have far reaching effects. The British Crime Survey (BCS) also indicated that older age groups generally think that the crime rate in the country as a whole had risen a lot in the last two years. This impacts upon fear and perception of crime issues and can restrict older people to their homes far more than it should.

Older people are likely to be victims of theft & handling (36% compared to 21% of victims under 75); Burglary dwelling (21% against 5% of victims under 75) and criminal damage (25%).

68% of the burglaries experienced by the over 75's were distraction burglaries, the majority taking place in the daytime.

Storrington with 24 (over 75) burglaries in the 3½ year period shows the highest level in North Downs Division, followed by Riverside Ward in Horsham Town. Storrington's demographic profile shows that the category of 'independent pensioners living in their own homes who are relatively active in their lifestyles' form an appreciable percentage of the population, so it is not surprising that this concentration occurs. However only two of these burglaries were specific distraction offences. Riverside did however record nine distraction offences in this period.

SUSPECT KNOCKERS: between January and September 2007 there were a total of 65 incidents reported to the Police in the Horsham District relating to suspicious doorstep callers. These incidents include where residents have informed the Police of persons selling items, asking to read utility meters or see bills or offering to complete building/labouring work. The map below shows the number of incidents by ward. It can be seen the greatest number of reports came from the wards of Horsham Park (7), Chantry (9) and Chanctonbury (8).

DISTRACTION BURGLARIES: between January and September 2007 there were a total of 21 distraction burglaries recorded across the Horsham District. These can be seen plotted in the map below. By ward, 5 such crimes were reported in Horsham Park. No other ward suffered from more than two such crimes.

NO COLD CALLING ZONES: The location of these zones currently in operation can be seen below. Two are located in Bramber and Upper Beeding, and one in each of the wards of Chantry, Horsham Park, Roffey North and Trafalgar.

RAPID ACTION TEAM ATTENDANCE: Trading Standards attended two incidents across the district between January and September, one in Chanctonbury and one in Roffey South. This type of attendance results in some form of intervention with either a trader or consumer where trading has been carried out fraudulently.

Summary of Recommendations

Comparison of Crime: Whilst burglary (artifice) rates have fallen a number of older people have fallen victim to domestic burglary where entry by trick has been a factor.

Size of problem: The District is well under our comparator group average for distraction burglary however spates of incidents to occur from time to time.

Harm caused: Long lasting to individual victims – Repeat offences can also occur

Change over time: Levels remain similar to previous years

Public Expectations: Contributes to fear of crime and worries older people

Recommendation: Sustain investment at present level and develop crime prevention opportunities and joint working with Trading Standards, Saxon Weald & partner agencies.

Anti-Social Behaviour

Is defined as: *“Behaviour which causes or is likely to cause harassment, alarm or distress to one or more people who are not in the same household as the perpetrator”*

Police Incident data was researched on CADDIE by selecting all incidents classified as: rowdy nuisance / inappropriate use of fireworks / rowdy nuisance – neighbours / rowdy inconsiderate / environmental damage / littering.

A total of:

- **2271 incidents**

fell into these categories, 89% of which were classified as nuisance / inconsiderate. Denne Ward with 314 incidents was top with Billingshurst & Shipley following close behind with 267 incidents.

Searching on the key words drink / drinking / drunk / drunken or alcohol revealed 75 incidents in Billingshurst & Shipley, 60 in Denne, 45 in Horsham Park and 33 in Chantry. This gives an idea of the scale and demographic pattern of the problem.

The CADDIE matrix gives a good indication of the other key factors such as ‘noise’, ‘motorcycles’, and ‘youths’ which impact on peoples perceptions of anti-social behaviour.

The 2271 ASB incidents have been further analysed by completing key word searches of the text contained within each incident. And the resulting chart can be viewed in the appendices.

A structured approach to dealing with ASB is gradually eroding the problem and the co-ordination provided by the ASB co-ordinator role is invaluable in ensuring those coming to police attention are tracked and appropriate interventions initiated. The Revolution programme funded by the CDRP is one example of the success of a targeted intervention aimed at those young people who are causing the majority of the problems.

The Police Neighbourhood Specialist Team (NST) have been working to resolve a diverse range of neighbourhood issues and an improved detection rate and decreasing levels of criminal damage are seen as a key indicator of success. PCSO’s are attached to Schools at Tanbridge, Steyning Grammar and Brinsbury College also provide a useful link with younger members of the community. The seven Local Action Teams (LAT’s) continue to provide useful community intelligence and resolve local problems. The introduction of the Council’s Street Scene Team of Wardens in September has also impacted upon anti-social behaviour and has allowed extra resources to be targeted towards hotspots and especially parks and open spaces across the District. The granting of accredited status will reinforce this impact

Summary of Recommendations

| | |
|-----------------------------|---|
| Comparison of Crime: | Police recording classifications for ASB on the Operational Information System (OIS) changed in 2006/2007 so a like for like comparison cannot be made, however the 17% reduction in criminal damage is a good indicator that incidents are reducing. |
| Size of problem: | Perception impacts upon which ASB incidents are reported to police & it is difficult to make meaningful comparisons with other areas. |
| Harm caused: | Whilst most ASB is low level it impacts upon peoples quality of life |
| Change over time: | Change in recording classification does not allow comparison |
| Public Expectations: | High expectation of police and authorities to tackle ASB |
| Recommend: | High priority and continue level of investment in ASB infrastructure but review structures to ensure value for money and maximum efficiency. |

Domestic Violence

- **263 crimes** with a 'domestic' marker attached

were recorded in the review period, indicating a relationship with domestic violence.

1 in 4 women experience domestic violence in their lifetime and between 1 in 8 to 1 in 10 women experience it annually. Less than half of all incidents are reported to the Police, but they still receive one domestic violence call every minute in the UK.

Domestic violence causes considerable damage to individuals, families, the community and impacts on a range of services such as housing, education and social services. A recent study commissioned by the Women's Equality Unit estimates the yearly cost at £5.7 billion across the UK. Much of this cost is taken on by local authorities, mainly in housing and social services.

The two most commonly recorded domestic offences were ABH (39%) and common assault (37%). Domestic violence accounted for 6% of crime overall. Denne and Billingshurst were the areas containing the greatest proportion of the crimes.

Of the incidents recorded 82% of the victims were female and 18% male; most being between the ages of 25 and 44. The introduction of the WORTH Project to Hospitals serving the Horsham District is likely to see an increase in reporting.

Responses to DV in the District have included the introduction of 'Safe at Home' scheme which provides 'target hardening' for premises where the victim has decided to stay, providing the perpetrator has left the relationship.

Summary of Recommendations

| | |
|-----------------------------|---|
| Comparison of Crime: | There is no separate Home Office crime coding for DV but a domestic marker is attached to the principle offence recorded and these equated to 6% of all crime recorded. |
| Size of problem : | Restriction above precludes meaningful comparison with other areas. |
| Harm caused: | Long term impact on victims and families |
| Change over time: | Increase in reporting expected as result of WORTH project at Crawley Hospital |
| Public Expectations: | 'Hidden crime' but high level of expectation that offences will not be tolerated |
| Recommendation: | High Priority - Continue existing level of investment & develop support services. |

Racist Incidents

- **16 crimes**

With a racist marker were recorded, 13 of which were classified as harassment. The greatest single proportion of victims were white European (37%). Denne Ward saw the largest number (5) with two each in Steyning, Billingshurst and Shipley.

It is the intention to encourage the reporting of racist incidents and is therefore difficult to distinguish whether an increase is a measure of an increasing problem and/or confidence in reporting. The WSCC Racist Incidents Team collates data from a wide range of sources which can help in assessing trends.

Summary of Recommendations

| | |
|-----------------------------|---|
| Comparison of Crime: | With such a low level reported difficult to make meaningful comparison |
| Size of problem : | As per DV – Incident marker attached to crime category reported |
| Harm caused: | High impact on individual victims and communities |
| Change over time: | With development of WSCC RIT Team this should be possible in the future. |
| Public Expectations: | High expectation especially amongst ethnic minority communities |
| Recommendation: | Reconstitute Hate Crimes Monitoring Group of CDRP and maintain current level of investment. |

Deliberate Fires

Arson reduced by 39.6% *

- **122 fires**

classified by the Fire Service as deliberate were recorded in the review period. 37% were listed as primary which indicates that items of insurable value such as houses, sheds or vehicles. The other 63% were listed as secondary indicating fires such as bins, rubbish and derelict cars.

In the Horsham District, there has been a reduction in deliberate fires compared to the same time last year.

This is despite a quite busy April, especially for the secondary fire types (typically non-insurable property such as rubbish bins and skips) Numbers of this type of deliberate fire commonly peak in periods of hot, dry weather.

There have been just 2 fires of derelict vehicles in Horsham District during the first 6 months of 2007/8.

Regarding totals of all fires for the year in the District, so far Horsham station ground has been the busiest for all types of deliberate fire. It had by far the most secondary deliberate fires in the April peak.

There are 6 fire stations in Horsham District

- Partridge Green
- Steyning
- Horsham
- Billingshurst
- Storrington
- Henfield

Summary of Recommendations

Comparison of Crime: A 40% decrease in deliberate fires (police recorded) appears very encouraging although the WSFRS category is higher (based on fire officer assessment rather than

all factors required for a crime category).

Size of problem : No comparison available with other areas

Harm caused: Can be life threatening and cause extensive damage to property

Change over time: Reducing

Public Expectations: High expectation of prompt emergency response

Recommendation: Continue current level of investment and develop partnership working opportunities via Handy Van, Street Scene & Neighbourhood Wardens & partner agencies.

Road Safety

WSCC Highways and Transport recorded 284 accidents in the District – resulting in 378 casualties. 25 of these casualties were children under 16. 83% of casualties were classified as slight. There were five fatalities.

39% of the accidents occurred in 60 mph areas with 30% in 30 mph zones; 14% in 70 mph areas; 11% in 40 mph and 6% in 50 mph zones. The majority of the accidents involved car drivers between the ages of 30 and 59.

Injury accidents have also taken up a great deal of Fire & Rescue Services resources where specialist rescue, extraction or fire extinguishing have been required.

The CDRP has not had a specific remit around accident prevention although it has facilitated the purchase of two Speed Indication Devices (SID) in use in the south and the north of the District under the aegis of 'community reassurance'.

The CDRP also run anti-social driving days aimed at young drivers whose behaviour on the road has led to cause for concern, this will often be incorporated into an Acceptable Behaviour Contract (ABC) and already involves the Fire & Rescue Service.

There is now a move at County level to involve CDRP's more in this agenda, although WSCC Highways and Sussex Police should continue to lead in this area.

Summary of Recommendations

Comparison of Incidents: Across West Sussex KSI targets for casualty reduction are not being achieved.

Size of problem : No meaningful comparison with other areas owing to road network differences

Harm caused: Extensive to victims, witnesses and families + cost to NHS, Highways, agency time

Change over time: (All) Casualties rose by 2.2% in 2006 but have dropped on average over the last 10 years.

Public Expectations: Matter of continuing public concern and a number of high profile RTC's involving the death of young drivers have occurred in the District.

Recommendation: **High Priority** - Extend the CDRP remit to include casualty reduction by Formation of a sub-group of the Joint Action Group (JAG) to exploit opportunities to reduce road speed & road casualties across the District.

Substance Misuse

- **160 drug related crimes**

Were recorded in the review period, the vast majority (95%) were for possession of a controlled drug. 128 offences involved Cannabis or Cannabis Resin, which equates to 80% of all drug offences. Between April and September 410.21 grams of herbal cannabis, 72.4 grams of cannabis resin and 37 cannabis plants were seized.

Between 1st April and 30th September 2007 54 drug seizures of drugs other than cannabis took place with Cocaine (57% of total) outweighing all other drugs. 6 Seizures of crack cocaine took place reflecting the national picture that this drug has not had the impact on the UK which was originally predicted.

Between April 2006 and March 2007 – 96 people were referred to drug services in the Horsham District, of which 75 attended triages for assessment and referral. 43 triages were made to structured treatment programmes and 2 to residential rehabilitation services.

The main problem drugs were recorded as:

- **Opiates – 53%**
- **Cocaine / Crack – 21%**
- **Cannabis – 16%**
- **Other – 7%**
- **Benzodiazepines – 3%**

In addition to the above 15 referrals were recorded as Crawley/Horsham as there was insufficient data to identify the local authority. Addaction reports an increasing number of clients for cocaine and ecstasy which may suggest a growing recreational drugs scene.

Between April 2006 and March 2007 –

- **89 persons were referred to alcohol services**

in the District, of which 56 attended triages. 25 persons were referred to structured day programmes and 1 to residential rehabilitation services.

ALCOHOL SERVICE DATA: The following information is taken from the 'Summary report of West Sussex Substance Misuse Services' provided by the West Sussex Drug and Alcohol Action Team.

Note: The recording of the treatment journey for clients entering the substance misuse service starts with the referral documentation. This documentation is completed when a client self presents at a service, when a third party e.g. a GP refers a client to a service or when a client is referred via the criminal justice system.

DATA ANALYSED COVERS 04/06 – 03/07 PERIOD

- A total of 89 persons were referred to Alcohol Services in the Horsham District, of which 56 attended triages. (Where triage refers to the process where an individual is assessed in a service and directed on to further treatment).
- 21 triages were made exclusively to tier 2 alcohol services; these are open access services where clients may attend voluntarily.
- Three triages were made exclusively to the Sussex Alcohol and Substance Use Service, this is a counselling service.
- 25 triages were made to tier 3 services, these are structured day programmes. (These cases include clients triaged to more than one tier 3 service and/or clients triaged to tier 2 services as well as tier 3 services).
- One triage was made exclusively to tier 4 services, these are residential rehabilitation services.

Summary of Recommendations

Comparison of Crime: Substance misuse covers a wide range of offences & interventions summarised above

There has been little perceptible change over the past few years.

Size of problem :

Harm caused: Drug & alcohol misuse has a detrimental effect on users, families and the wider community and can lead to acquisitive crime.

Change over time:

Public Expectations: Surveys still indicate that public perceive this as a problem although limited numbers are personally affected.

Recommendation: Statutory duty under S.17 C&D

Act to tackle substance misuse retain current level of investment and increase contact with DAAT to develop joint working opportunities and increase awareness within partner agencies.

Cleaner, Safer, Greener

The Clean Neighbourhoods & Environment Act 2005 amended S.17 of the Crime & Disorder Act to include a duty to prevent other behaviour adversely affecting the local environment. This reinforces new local authority powers under the CNEA to tackle abandoned vehicles, litter and refuse, graffiti and other defacement, waste, dogs, noise and local environmental quality. This legislation will allow local authorities and CDRP's greater enforcement powers to tackle enviro-crime. The establishment of the Street Scene Team has allowed more resources to be devoted towards these aims.

Overall environmental Standards in Horsham District have been rated by the Government for 2006/2007:

- Graffiti – Good
- Fly posting – Good
- Flytipping – Good
- Litter – Satisfactory
- Detritus* – Unsatisfactory

(* Described as small items of granular or organic material <grit, old leaf, blossom fall, sand etc> which, where found can make an area appear grubby or uncared for).

The HDC Clean Neighbourhoods (Prevention / Enforcement) Strategy sets out to improve environmental quality through co-ordinated awareness, education and enforcement campaigns and the Street Scene Team will be working closely with environmental services and WSCC Street Scene Unit to realise its aims.

Summary of Recommendations

| | |
|-----------------------------|--|
| Comparison of Crime: | New council powers instigated in 2007 place renewed emphasis on this agenda however audits of District note good level of performance over time. |
| Size of problem: | Proportionate for size of area – favourable comparison with similar size areas |
| Harm caused: | Considerable cost to LA in removing fly tipping, graffiti, allied enviro-crime, |
| Change over time : | No major peaks or troughs over past few years |
| Public Expectations: | High public expectation that District is kept clean & tidy and enviro-crime tackled swiftly. |
| Recommendation: | New duty under S.17 and Street Scene Team have added new capacity to agenda. Retain investment at present level and continue to develop SST. |

Prolific & Priority Offenders

DATA ANALYSED COVERS 04/06 – 04/07 PERIOD

- There were three Prolific and Priority Offenders on the scheme. Their record for the last 12 months they were at liberty pre-scheme was a total of eight convictions, comprising 14 offences.
- Their record for the first 12 months at liberty after the scheme was three convictions comprising three offences.
- The figures above represent a reduction of five convictions, and 11 offences (79%).

SEPTEMBER DATA

- There are currently 15 PPO's in the Horsham District.
- Six are currently under intensive supervision in the Rehabilitate and Resettle strand.
- Three are at liberty in the Catch and Convict strand.
- One is on remand in the Catch and Convict strand.

The Prolific and Priority Offenders scheme continues to provide an effective method of monitoring those offenders across the district who are responsible for an above average rate of offending.

Summary of Recommendations

Comparison of Crime: N/A

Size of problem : N/A

Harm caused: N/A

Change over time:

Public Expectations: The PPO scheme identifies and interacts with those offenders who commit a disproportionate amount of crime but this work is not widely known outside the partner agencies but there is a general expectation that the 'system' will deal effectively and proportionately with serious offenders.

Recommendation: Continue existing level of investment subject to available resources and develop the Prevent and Deter strand to take action with young clients before they aspire to PPO Status.

Public Perception / Community Engagement

The gap between the perception of crime and disorder and the reality has always been large and despite much effort by the CDRP and its partners it is always likely that the fear of crime will outweigh the actual chances of becoming a victim of it.

Every three years a consortium of local authorities in West Sussex undertake a Best Value General Survey using a random sample of local addresses drawn from the Post Office mail users address file.

- **45% of respondents felt very safe outside during the day, whilst the figure fell to only 8% feeling very safe at night.**
- **45% felt fairly safe during the day and 38% fairly safe at night.**
- **25% felt neither safe nor unsafe after dark with 8% feeling the same during the day.**
- **21% felt fairly unsafe after dark and 2% felt fairly unsafe during the day.**
- **8% felt very unsafe at night and 0% felt very unsafe during the day.**

The figure of 29% feeling fairly or very unsafe after dark is still a worrying one and probably based on perception and the fact that a lot of older people do not venture outside after dark.

These perception figures (both for day and night) have hardly moved since the 2003 Survey where the same questions were asked.

The survey also asked questions around anti-social behaviour with "parents not taking responsibility for the behaviour of their children" scoring 68% closely followed by "teenagers hanging around on the streets" coming in at 43%.

Parental responsibility is seen as a key influence on anti-social behaviour with over 64% of respondents perceiving that parents do not take enough responsibility for the behaviour of their children.

This can be contrasted with only 10% of respondents seeing abandoned or burnt out vehicles as a problem. The previous survey in 2003 recorded 36% of respondents seeing this as a problem. (The influence of Operation Crackdown on an obviously visible problem has made a real and a perceived difference for the better).

The figures are reflected in the last Sussex Policing survey in June 2006 where 1,000 residents who responded rated the following issues a problem in their area.

- **Speeding Motorists – 76%**
- **Young people hanging about – 61%**
- **Litter & Rubbish – 61%**
- **Dog Fouling - 53%**
- **Vandalism - 53%**
- **Graffiti - 38%**
- **Cycling or skateboarding on pavement – 28%**
- **Noisy Neighbours 21%**

Public Perception has also been gauged through a wide range of public contact opportunities such as the Sussex Police Authority Public Consultation Meeting ; Local Strategic Partnership; Local street briefings; Local Action Teams; Signal Crime (SIG) and Joint Action Group (JAG) Meetings; Older and Younger Persons Strategy Groups; Speak Out Event for young people; contact with Parish Clerks and interaction with communities and individuals who have brought matters to the attention of the Community Safety Unit, The Police and our partner agencies.

Summary of Recommendations

Comparison of Crime: N/A

Size of problem :

Harm caused: Fear of crime and anti-social behaviour continues to impact upon public

Change over time: Surveys continue to show a gap between reality and fear of crime

Public Expectations: Common themes emerge from consultation : Speeding / ASB / Drugs & Alcohol Youths / Criminal Damage / Police & Partner visibility.

Recommendation: Continue to publicise work of CDRP and success of interventions via PR group. Identify further opportunities for crime prevention and reassurance messages. Further develop street briefings & crimeproof events with NST.

Section 5

Recommended priorities and activity currently being undertaken to address these

5.1 The following is a list of the recommended priorities that have emerged from the strategic assessment. These take into account relevant public service agreements and local public consultation, including that undertaken by Sussex Police Authority. In summary they are

1. Acquisitive crime, particularly burglary and theft.
2. Road traffic crashes and casualties
3. Anti-social behaviour, in particular prevention and behaviour change interventions
4. Serious violent crime, including domestic violence
5. Alcohol and drug-related crime and disorder, including public place violent crime (PPVC) and criminal damage
6. Street scene issues
7. Fear of crime and public reassurance

5.2 The current community safety strategy (partnership plan) commenced in April 2005, and community safety partners have undertaken much activity in order to reduce crime, disorder, anti-social behaviour, substance misuse and fear of crime. A summary of this activity grouped under the emerging priorities is shown below and includes:

5.3 **Acquisitive crime, particularly burglary, theft and robbery.**

- Established 7 'No Cold Calling Zones' to tackle bogus callers and distraction burglars in conjunction with Trading Standards.
- Undertook 2 multi-agency 'Crimeproof' events/days at Cowfold and Upper Beeding to publicise and promote the work of the partnership including security advice.
- Provided security/distraction burglary advice in a variety of media outlets including 'HDC news' which goes to every home in the district, parish newsletters and older peoples publications
- Targeted information drops via Neighbourhood Watch and bin wraps
- Undertook a number of Street briefings
- Re-established the retail Crime Diversion Programme to deter repeat shoplifting by young offenders (17 years and younger). None of those that have completed the re-established scheme have as yet re-offended
- Funded the acquisition of, and operational training for, an Automatic Number Plate Recognition (ANPR) system
- Actively targeted the most prolific and other priority offenders. Between April 2006 and March 2007, three Prolific and other Priority Offenders were part of the PPO Catch & Convict strand. Their record for the 12 month period they were at liberty pre-inclusion in the PPO programme was a total of 8 convictions, comprising 14 offences. Their record for the 12 months at liberty after the scheme was 3 convictions for 3 offences. This figure represent a reduction of 5 convictions (62%) and 3 offences (79%)
- Started work to improve safety and security at targeted car parks in line with the requirements of the Safer Car Parks Award
- Shop Watch – supported the network of interconnected retail outlets in Horsham
- Established a Town Centres Manager (Horsham District Council in 2006) to work with retail communities in Horsham, Southwater, Billingshurst, Storrington, Pulborough, Steyning and Henfield.
- Established and extended Farm watch
- Used CCTV in repeat burglary hotspots
- Established an Accredited Street Scene Warden Team comprising a Supervisor, two full-time Wardens and two part-time Wardens. The team provide advice and signposting to services such as the Handyvan.
- Neighbourhood wardens - two schemes launched and established at Steyning, Bramber & Upper Beeding and Ashington. Two officers on each of the schemes. Same role as Street Scene Wardens with respect to acquisitive crime.

- Established 7 Local Action Teams (LATs) in Southwater, Pulborough, Billingshurst, Storrington/Sullington, Victory Road Recreation Ground (Horsham), Steyning and Broadbridge Heath. Many of the service improvements initiated at neighbourhood level have been as a result of intelligence, information and actions taken by Local Action Teams.
- Introduced, established and expanded a Handy Van Service that serves the old, the vulnerable and the poor. The service provides low cost maintenance and officers also undertake security and crime reduction checks including the fitment of improved security measures. The Handy Van recently completed it's 3,000th visit in the District.
- Used CADDIE and the National Intelligence Model to support decision taking and resource deployment
- Established 'Revolution', a behaviour modification course targeting young people within the ASB process, some of whom were also engaged in shoplifting.
- Created and distributed student snatch cards to encourage prudent use of i-pods/mobile phones
- Displayed lamppost banners in hotspots such as where handbag snatches were occurring
- Provided 'at cost' crime prevention products such as door viewers, door bars, alarms, intercoms, chains, etc

5.4 **Road traffic crashes and casualties**

- Used 'Pay and Display' car park tickets to promote road safety messages
- Promoted and funded 'Safe Drive Stay Alive' theatre performances for young people
- Launched Community Speed Watch and purchased a Speed Indicator Device (SID) for use by local volunteers. 35 Parish Councils or local groups have signed up and over 100 volunteers have been trained
- Extended Operation Crackdown to include anti-social driving
- Distributed and displayed safe driver posters at doctors surgeries, sixth form colleges, etc
- Compelled 14 young people to complete safe driver skills training after they continually came to attention for anti-social driving. Only 3 participants have subsequently come back to out attention

5.5 **Anti-social behaviour, in particular prevention and supportive interventions**

- Established SIG and JAG groups in order to co-ordinate intelligence and actions
- Obtained 19 ASBOs and 30 Acceptable Behaviour Contracts (ABCs)
- Sent warning letters or gave advise to 1056 parents about the behaviour of their children
- Worked with Joint Access Team (JAT) to develop appropriate interventions
- Introduced new reporting and recording procedures for anti-social behaviour
- Included anti-social behaviour cases within the work of the Horsham Joint Access Team
- Appointed three Safer Schools Partnership Officers to build relationships, trust and respect
- Established a Horsham Pubwatch Scheme
- Established an Accredited Street Scene Warden Team comprising a Supervisor, two full-time Wardens and two part-time Wardens with responsibility for education enforcement of HDC Byelaws and dealing with low levels of anti-social behaviour, alcohol misuse and cycling infringements.
- Maintained two neighbourhood warden schemes at Steyning, Bramber & Upper Beeding and Ashington. Same role as Street Scene Wardens with ASB.
- Established 7 Local Action Teams (LATs) in Southwater, Pulborough, Billingshurst, Storrington/Sullington, Victory Road Recreation Ground (Horsham), Steyning and Broadbridge Heath.
- Established 'Revolution', a behaviour modification course targeting young people within the ASB process. 14 young people have passed through the scheme and in the period since they completed thee has been a 75% reduction between the number of times they 'came to attention' after the course than in the same period before the course
- Established Escape, a parenting support programme for parents struggling to cope with children engaged in ASB.

- Established Family Active, a programme that aims to help build cohesive family relationships where tensions and communication difficulties have resulted in such family members creating local problems.
- Undertook outreach work with the Youth Service aimed at young people
- Sought the safety concerns of children and young people through Horsham Youth Council
- Delivered 'Fire-break' courses involving young people at risk of social exclusion
- Supported the Snack Wagon, a flexible mobile youth provision for young people aged between 13 and 18 years. The vehicle acts as an informal meeting place and aims to provide a safe space for young people where they are already gathering, provide a base from which outreach and detached youth work can be delivered and reduce the numbers of young people engaging in anti-social behaviour
- Supported the United Bus, a mobile outreach youth support project delivered by Kingdom Faith Church, which offers young people an informal setting to meet and work with Youth Workers on various issues.
- Supported the Purple Bus, a mobile youth support bus, run by West Sussex Youth Service which offers young people information and support with various issues
- Supported Horsham Parks Youth Support Team, a team of volunteers providing detached youth work in the Horsham Parks during the summer months on Friday and Saturday evenings.
- Extended Horsham Skate Park and opened additional parks at West Chiltington, Ashington, Partridge Green, Henfield and Southwater.
- Provided bi monthly SNAP Dance Nights, a safe 'club night' for 13-17 year olds held at the Drill Hall, Horsham with a resident DJ, competitions and live acts. The events are alcohol, tobacco and drug free and all young people are searched on entry by professional security staff.
- Delivered Gravity, a youth arts project that teaches popular activities such as DJing, MCing and street dance via Youth Club workshops throughout the district. 45 workshops delivered in 6 youth clubs leading to a clubnight for participants and their peers at Shelley's night club.
- Helped deliver Battle of the Bands, Billirox and other youth music events
- Helped establish Youth Club at Southwater and additional youth nights at villages such as Warnham and Billingshurst.
- Launched monthly street soccer on Friday nights at Broadbridge Heath Leisure Centre
- Delivered the Safer Place Competition to encourage young people to take responsibility for making their schools and other areas where they spend time safer.

5.6

Domestic violence

- Launched and established a safe at home scheme
- Published a directory of services for victims of domestic violence for professionals in the field
- Undertaken a poster campaign and signpost service encouraging victims to seek support
- Launched the Worth Project at Crawley Hospital for victims of domestic violence who present themselves for treatment following physical abuse by their partners or ex-partners
- Maintained, supported and funded the Horsham and Crawley Domestic Violence Drop-in Centre. Between April 2005 and September 2007, the drop-in held 115 sessions and saw 383 users.
- Established a weekly Specialist Domestic Violence Court at Magistrates Court and provided training to magistrates, court staff, practicing solicitors and the Victim Support service
- Appointed an Independent Domestic Violence Advisor to support the prosecution of perpetrators

5.7 **Alcohol and drug-related crime and disorder, including public place violent crime (PPVC) and criminal damage**

- Established SIG and JAG groups in order to co-ordinate intelligence and actions
- Promoted the FRANK confidential drugs information helpline service
- Maintained the Drugs Arrest Referral Scheme at Crawley Custody Centre
- Established a Horsham Pubwatch Scheme
- Referred a total of 197 persons within the division to Drug Services, of which 144 attended triages. (Where triage refers to the process where an individual is assessed in a service and directed on to further treatment).
- Supported the launch of the Alcohol Arrest Referral Scheme at the Custody Centre
- Appointed a Divisional Public Place Violent Crime Reduction Officer and established a police Divisional Licensing Unit
- Launched the 'Enough is Enough', 'Think Safe, Drink Safe' and 'Know Your Limits' safer drinking campaigns
- Referred a total of 221 persons within the division to Alcohol Services in Crawley, of which 141 attended triages.
- Increased the number of police-linked CCTV cameras
- Undertook partnership compliance visits to pubs, clubs and bars, particularly in the town centre
- Carried out targeted test purchases of underage sales in shops and supermarkets.
- Used metal detectors to prevent weapons being taken into licensed premise
- Opened the Park Barn Drop-In for those people affected by someone else's substance misuse
- Carried out drug tests on those entering places of public entertainment
- *Introduced electronic scanning devices for entry into selected town-centre clubs and pubs*
- Ran alcohol and drugs awareness projects for young people via the Snack Wagon and district youth clubs
- Gained accredited powers for Street Scene Team and Neighbourhood Wardens enabling them to confiscate alcohol from underage drinkers

5.8 **Street Scene Issues**

- Signed up to West Sussex Clear All approach to Graffiti
- Established an accredited Street Scene Team comprising a Supervisor, two full-time Wardens and two part-time Wardens the Team have responsibility for education about and enforcement of HDC Byelaws; enforcement and education on aspects of the HDC Clean Neighbourhoods Strategy (Litter, Dog Fouling and allied 'envirocrime'); operational Support to HDC Departments, Police, RSL and CDRP partners and public reassurance across our Parks and Open Spaces and Saxon Weald Estates.
- Gained similar accreditation for the Neighbourhood wardens

5.9 **Fear of crime and public reassurance**

- Established police Neighbourhood Specialist Teams and introduced street briefings
- Promoted Crimestoppers to report anonymously information about crime and criminals
- Installed additional street lighting in vulnerable areas
- Launched the Council's Street Scene Team for reassurance presence in local parks
- Regularly published and promoted crime prevention and personal safety information and advice
- Regularly published and promoted statistics that seek to close gap between perceptions of crime and actual crime
- Established an accredited Street Scene Team comprising a Supervisor, two full-time Wardens and two part-time Wardens the Team have responsibility for education about and enforcement of HDC Byelaws; enforcement and education on aspects of the HDC Clean Neighbourhoods Strategy (Litter, Dog Fouling and allied 'envirocrime'); operational Support to HDC Departments, Police, RSL and CDRP partners and public reassurance across our Parks and Open Spaces and Saxon Weald Estates.
- Gained similar accreditation for the Neighbourhood wardens
- Undertook joint high visibility reassurance patrols in hotspot locations involving Council Community Wardens and Police Community Support Officers

Impact of above community safety partnership activity

- 5.10 The Horsham Community Safety Strategy 2005/08 has three strategic aims, namely to:
- Reduce Crime
 - Reduce the fear of crime
 - Reduce anti-social behaviour

The impact of initiatives delivered through the partnership is already laid out in sections 2 and 4.

- 5.11 In summary, the Horsham RAP agreed with Government Office for the South East, a reduction target of 10% across all BCS comparator crimes for the 2005/08 Horsham Community Safety Strategy and this is on course for being achieved. The British Crime Survey (BCS) Indicator crimes fell by 13.4% over the past 12 months. Total crime has consistently fallen over the three years of the existing strategy.

Section 6

Gaps in provision

- 6.1 Whilst it remains impossible to meet some peoples expectations around uniformed presence on the street it is clear from the assessment that some real improvements have been made in this area over the last three years.
- 6.2 Some significant new services and structures have been introduced (the PPO and ASB programmes, the Street Scene Team, the Domestic Violence Drop In, Safe At Home, SIG, JAG, etc) and the challenge is to protect these services and other schemes (such as the PPO Education and Training Officer) that are continually under threat as a result of funding constraints.
- 6.3 The District Council has highlighted a gap in services for young people with intensive support needs who are seeking accommodation but who also often have behavioural issues and more work is required to assess the real crime and disorder impact of this service gap.
- 6.4 Additionally, the District Commander has identified a lack of resource to investigate Domestic Violence Incidents and is keen to identify resources to increase capacity in this respect.
- 6.5 There have also been calls from stakeholders to ensure that support to Neighbourhood Watch Schemes is maintained and for the investigation into a possible Street Champions Scheme allied to this.
- 6.6 Although these gaps will be investigated as part of the partnership action plan any resource planning to address these gaps will be severely constrained by the limited resources that the CDRP and its partners control.

Section 7

Conclusion and next steps

- 7.1 The Strategic Assessment identifies the following as the crime and disorder priorities within the Horsham District for 2008/9
1. Acquisitive crime, particularly burglary, theft and robbery (and that linked with drugs)
 2. Road traffic crashes and casualties
 3. Anti-social behaviour, in particular prevention and behaviour change interventions
 4. Serious violent crime, including domestic violence
 5. Alcohol related crime and disorder, including public place violent crime (PPVC) and criminal damage
 6. Street scene issues (cleaner, safer, greener)
 7. Fear of crime and public reassurance
- 7.2 It recommends that actions to address these priorities are adopted within the 2008/11 Horsham Community Safety Partnership Plan.
- 7.3 It recommends that this assessment is reviewed and revised annually.
- 7.4 It also recommends that the following should be considered for inclusion within the West Sussex Community Safety Agreement.
1. Road traffic crashes and casualties
 2. Anti-social behaviour, in particular prevention and behaviour change interventions
 3. Domestic violence, including Multi-Agency Risk Assessment Conferences and sexual violence
 4. Alcohol and drug-related crime, in particular PPVC and criminal damage
 5. Street scene issues
 6. Fear of crime and public reassurance
- 7.5 The strategic assessment will also inform the development of the West Sussex Local Area Agreement, the Horsham and West Sussex Sustainable Community Strategy and the West Sussex Community Safety Agreement.
- 7.6 The Partnership Action Plan will be completed by 7th March 2008 signed off by the CDRP Board by 21st March 2008 and submitted to WSSCSP by 30th March 2008.
- 7.7 The Partnership Spending Plan has already been agreed in draft and submitted to WSSCSP. It will be fully agreed and signed off by 21st March 2008.
- 7.8 The Partnership Action Plan will be reviewed on a quarterly basis and the results of these reviews will inform the strategic assessment for 2009/10.

Appendices

Appendix A – CADDIE analysis

Appendix B – CADDIE summary document

Appendix C – Local Environmental Quality Standard Assessment

Appendix D – Housing and supported housing needs status report