

# Part 7

## Management Structure

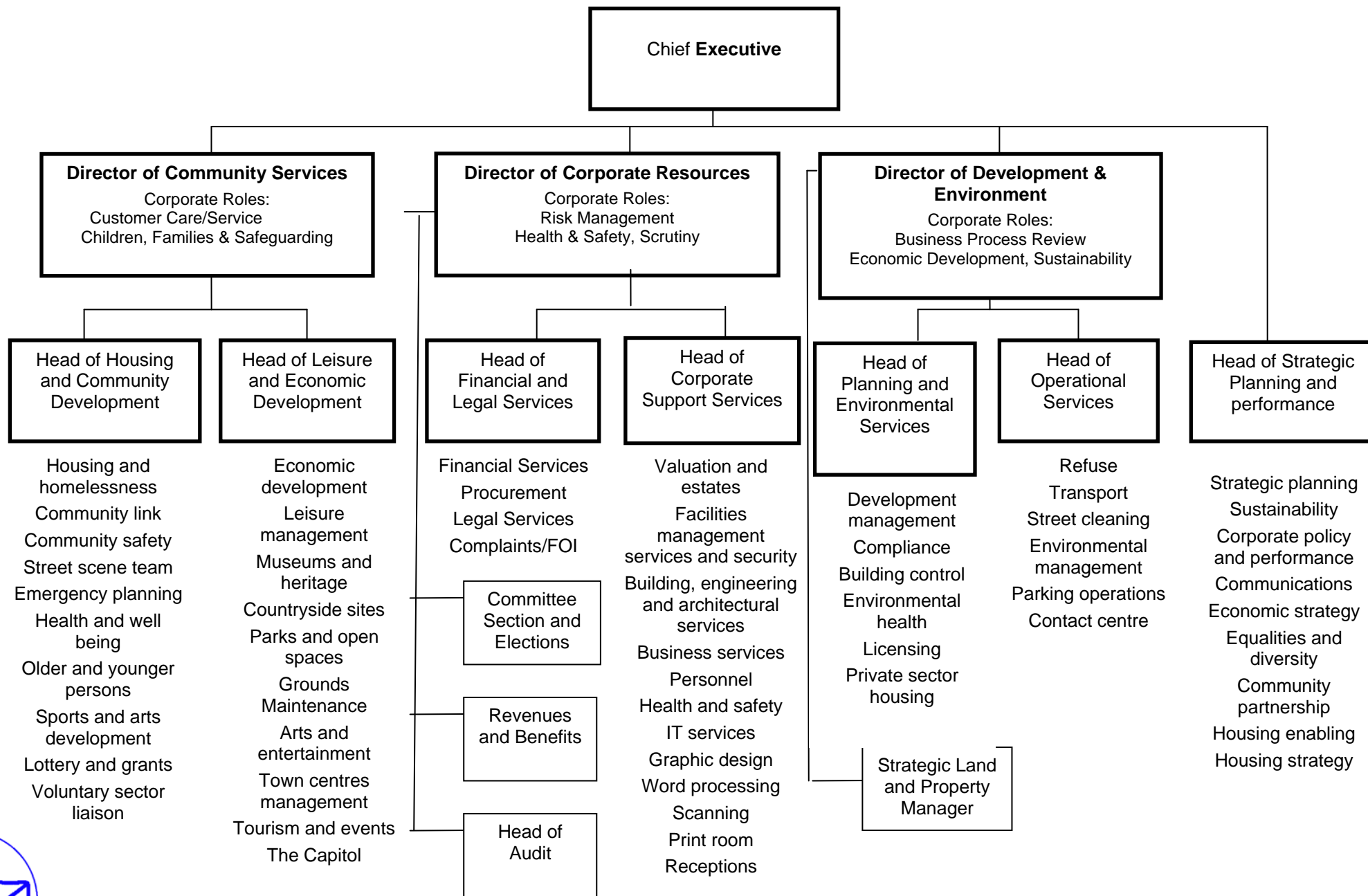
### 1. Introduction

The Council's officer management structure comprises the Chief Executive, three directorates, and seven service departments. The Council's Chief Executive, as Head of Paid Service, is ultimately responsible to the Council for the management of all staff. Each of the directorates is headed by a Director, and each of the service units is managed by a Head of Service. Directors report directly to the Chief Executive. Heads of Service report to their Director with the exception of the Head of Strategic Planning and Performance, who reports directly to the Chief Executive.

### 2. Organisational Chart

The following is an organisational chart of the Council's officer management structure:





### 3. Functions

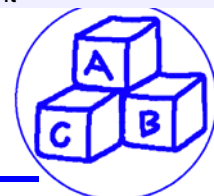
The Council's functions are delivered through the officer management structure as described in the following tables.

#### Chief Executive

Department or Service	Functions
Community Services	<ul style="list-style-type: none"> <li>Housing Services</li> <li>Community Development</li> <li>Leisure Services</li> <li>Economic Development</li> </ul>
Corporate Resources	<ul style="list-style-type: none"> <li>Financial Services</li> <li>Legal Services</li> <li>Democratic Services</li> <li>Revenue and Benefit Services</li> <li>Audit Services</li> <li>Corporate Support Services</li> </ul>
Development and Environment	<ul style="list-style-type: none"> <li>Planning Services</li> <li>Environmental Services</li> <li>Operational Services</li> <li>Strategic Land and Property</li> </ul>
Strategic Planning and Performance	<ul style="list-style-type: none"> <li>Strategic Planning</li> <li>Performance</li> <li>Housing Enabling</li> </ul>

#### Director of Community Services

Department or Service	Functions
Housing Services	<ul style="list-style-type: none"> <li>Housing and homelessness</li> <li>Community link</li> </ul>
Community Development	<ul style="list-style-type: none"> <li>Community safety</li> <li>Street scene team</li> <li>Emergency planning</li> <li>Health and well being</li> <li>Older and younger persons</li> <li>Sports and arts development</li> <li>Lottery and grants</li> <li>Voluntary sector liaison</li> </ul>
Leisure Services	<ul style="list-style-type: none"> <li>Leisure management</li> <li>Museums and heritage</li> <li>Countryside sites</li> <li>Parks and open spaces</li> <li>Grounds Maintenance</li> <li>Arts and entertainment</li> <li>Town centres management</li> <li>Tourism and events</li> <li>The Capitol</li> </ul>
Economic Development	<ul style="list-style-type: none"> <li>Economic development</li> </ul>



## Director of Corporate Resources

Department or Service	Functions
Financial Services	<ul style="list-style-type: none"> <li>Financial Services</li> <li>Procurement</li> </ul>
Legal Services	<ul style="list-style-type: none"> <li>Legal services</li> <li>Complaints/FOI</li> </ul>
Democratic Services	<ul style="list-style-type: none"> <li>Committee section and elections (including scrutiny)</li> </ul>
Revenue and Benefit Services Audit Services Corporate Support Services	<ul style="list-style-type: none"> <li>Revenues and benefits</li> <li>Audit</li> <li>Valuation and estates</li> <li>Facilities management services and security</li> <li>Building, engineering and architectural services</li> <li>Business services</li> <li>Personnel</li> <li>Health and safety</li> <li>IT services</li> <li>Graphic design</li> <li>Word processing</li> <li>Scanning</li> <li>Print room</li> <li>Receptions</li> </ul>

## Director of Development and Environment

Department or Service	Functions
Planning Services	<ul style="list-style-type: none"> <li>Development management</li> <li>Compliance</li> <li>Building control</li> </ul>
Environmental Services	<ul style="list-style-type: none"> <li>Environmental health</li> <li>Licensing</li> <li>Private sector housing</li> </ul>
Operational Services	<ul style="list-style-type: none"> <li>Refuse</li> <li>Transport</li> <li>Street cleaning</li> <li>Environmental management</li> <li>Parking operations</li> <li>Contact centre</li> </ul>
Strategic Land and Property	<ul style="list-style-type: none"> <li>Strategic land and property</li> </ul>



## Head of Housing and Community Development

Department or Service	Functions
Housing Services	<ul style="list-style-type: none"><li>• Housing and homelessness</li><li>• Community link</li></ul>
Community Development	<ul style="list-style-type: none"><li>• Community safety</li><li>• Street scene team</li><li>• Emergency planning</li><li>• Health and well being</li><li>• Older and younger persons</li><li>• Sports and arts development</li><li>• Lottery and grants</li><li>• Voluntary sector liaison</li></ul>

## Head of Leisure and Economic Development

Department or Service	Functions
Leisure Services	<ul style="list-style-type: none"><li>• Leisure management</li><li>• Museums and heritage</li><li>• Countryside sites</li><li>• Parks and open spaces</li><li>• Grounds Maintenance</li><li>• Arts and entertainment</li><li>• Town centres management</li><li>• Tourism and events</li><li>• The Capitol</li></ul>
Economic Development	<ul style="list-style-type: none"><li>• Economic development</li></ul>

## Head of Financial and Legal Services

Department or Service	Functions
Financial Services	<ul style="list-style-type: none"><li>• Financial Services</li><li>• Procurement</li></ul>
Legal Services	<ul style="list-style-type: none"><li>• Legal services</li><li>• Complaints/FOI</li></ul>



## Head of Corporate Support Services

Department or Service	Functions
Corporate Support Services	<ul style="list-style-type: none"><li>• Valuation and estates</li><li>• Facilities management services and security</li><li>• Building, engineering and architectural services</li><li>• Business services</li><li>• Personnel</li><li>• Health and safety</li><li>• IT services</li><li>• Graphic design</li><li>• Word processing</li><li>• Scanning</li><li>• Print room</li><li>• Receptions</li></ul>

## Head of Planning and Environmental Services

Department or Service	Functions
Planning Services	<ul style="list-style-type: none"><li>• Development management</li><li>• Compliance</li><li>• Building control</li></ul>
Environmental Services	<ul style="list-style-type: none"><li>• Environmental health</li><li>• Licensing</li><li>• Private sector housing</li></ul>

## Head of Operational Services

Department or Service	Functions
Operational Services	<ul style="list-style-type: none"><li>• Refuse</li><li>• Transport</li><li>• Street cleaning</li><li>• Environmental management</li><li>• Parking operations</li><li>• Contact centre</li></ul>



## Head of Strategic Planning and Performance

Department or Service	Functions
Strategic Planning	<ul style="list-style-type: none"><li>• Strategic planning</li><li>• Sustainability</li></ul>
Performance	<ul style="list-style-type: none"><li>• Corporate policy and performance</li><li>• Communications</li><li>• Economic strategy</li><li>• Equalities and diversity</li><li>• Community partnership</li></ul>
Housing enabling	<ul style="list-style-type: none"><li>• Housing enabling</li><li>• Housing strategy</li></ul>

