

Partnership PLAN



2008-2011



Index

Topic	Page Number
Terms of Reference	3
Introduction	4
Achievements	4
Results	6
National Priorities	6
Public Service Agreements	8
Delivery Structures	10
National Intelligence Model	11
Supporting Structures	12
Acquisitive Crime	13
Road Safety & Speed	13
Anti-Social Behaviour	13
Serious Violent Crime	14
Public Place Violent Crime	14
Street Scene	15
Fear of Crime/ Public reassurance	15
PSA Targets	16
Local Targets	17
Appendix A - Relationship diagram	23
Appendix B - Strategic Assessment Summary	24



“Effective planning lies at the heart of work undertaken to tackle the problems in communities. The partnership plan is the basis for the partnership to ensure delivery of services that meet the needs of its communities. The partnership plan should also enable individual partnership members to understand their respective roles in supporting delivery across a range of services”

Delivering Safer Communities – Home Office 2007

Horsham District Crime & Disorder Reduction Partnership Terms of Reference

The Crime & Disorder Act 1998 created a number of statutory duties that shape the work of the CDRP.

S.5 & 6: ensures the Responsible authorities:

- *Are aware of the nature of crime and disorder in their area;*
- *Are able to identify the methods of developing and implementing effective action to help reduce that crime & disorder; and*
- *formulate and publish a crime & disorder reduction strategy* setting out the findings of the audit and putting the strategy into practice.*

**Amendments to the legislation have replaced the Strategy with a three year Partnership Plan which will be reviewed annually.*

S. 17: The responsible partners have a statutory duty to do all they can to reduce crime & disorder in their area.

S. 115: Partners have to share information for the purpose of reducing crime & disorder

- To prepare and partnership plan for Horsham District every three years and review annually.
- To carry out an annual strategic assessment of crime and anti-social behaviour.
- To secure multi-agency agreements on the delivery of priorities for action plans and the resources to deliver them.
- To agree outcomes of activity, performance manage and monitor achievement of them.
- To promote a better understanding of the scale of crime & disorder in Horsham District.
- To reduce crime and the fear of crime.
- The Partnership will meet no less than three times a year.
- The Partnership will appoint a Chairman every three years at the meeting where the Partnership Plan is adopted.
- Each member organisation will be entitled to one vote. A casting vote may be taken by the meeting Chair if a majority vote has not been achieved.

Introduction

The Crime & Disorder Act 1998 placed a statutory duty on the 'responsible authorities' to work together to reduce crime and improve the safety of communities within Horsham District. The Act recognised that sustained improvements would only be achieved through a concerted and coordinated multi-agency approach. The Horsham District Crime & Disorder Reduction Partnership is the focus for this activity.

A Strategic Appraisal of crime, anti-social behaviour and public place issues has been carried out and the following areas have been identified as priorities for the Partnership:

- **Acquisitive crime, particularly drug related burglary, theft and robbery.**
- **Road traffic collisions and casualties.**
- **Anti-social behaviour, in particular prevention and behaviour change interventions.**
- **Serious violent crime, including domestic violence.**
- **Alcohol related crime & disorder including public place violent crime (PPVC) and criminal damage.**
- **Street Scene (Cleaner, Safer, Greener) Issues**
- **Fear of crime & public reassurance**

Achievements

A comprehensive list of projects and activities undertaken during 2005-2008 can be found in the Strategic Assessment and a small selection; grouped under the priority headings; are given here.

Acquisitive Crime

- 'Crimeproof' Days run in two parishes.
- Seven 'no cold caller' zones established.
- Burglary & Car Crime advice 'bin wraps' delivered to hundreds of homes.
- Street Briefings established across the District.
- Retail Crime Diversion Programme established.
- Automatic Number Plate Recognition (ANPR) mobile system purchased.
- Seven Local Action teams (LAT's) established & supported.
- Crime Prevention Products made available at cost price to public.
- Community Handy Van maintained in partnership with Saxon Weald.

Road Safety

- 'Safe Drive Stay Alive' performances presented in District.
- Community Speed Watch established and two 'SID' devices purchased & deployed.
- Operation Crackdown extended to anti-social driving.
- 14 young drivers put through better driving course.

Anti-Social Behaviour

- Joint Action Group (JAG) and Signal Incidents Group (SIG) established to share data and co-ordinate multi-agency responses in quick time frame.
- 19 ASBO'S and 30 ABC's in force.
- 1,056 Warning Letters sent to parents by Anti-Social Behaviour Co-ordinator.
- Three 'Safer Schools Partnership' PCSO's seconded to local schools.
- Pubwatch Scheme established in Horsham.
- Street Scene Team of wardens established with remit to tackle low level anti-social behaviour.
- Community Safety Accreditation granted including power to seize alcohol from under 18's.
- Neighbourhood Wardens maintained in Ashington, Steyning, Bramber & Upper Beeding.
- Three 'Revolution' Courses establishing positive behaviour change in young people on cusp of offending.
- Snack Wagon service maintained deterring young people from ASB.
- United Bus supported with similar aims to Snack Wagon.
- Established YST Youth Support Team in Horsham Park during summer months (in partnership with Horsham Churches)

Serious Violent Crime

- Safe at Home scheme established for domestic violence victims.
- WORTH project established at local hospital to identify DV victims and offer early support.
- Contribute to drug & alcohol arrest referral scheme at Crawley Custody.
- Administrate Pubwatch scheme & loan UHF radios to six key town pubs.
- Share PPVC Officer with Crawley & Mid-Sussex.
- Test purchases carried out in pubs & off-licences.
- Electronic scanning devices introduced in selected licensed premises.

Street Scene (Cleaner, Safer, Greener)

- Signed up to West Sussex 'All Clear' response to graffiti.
- Street Scene Team of three full time and two part time wardens established to tackle envirocrime issues and ASB.
- CS Accreditation gained for SST and Neighbourhood Wardens.
- Education & Awareness Campaigns carried out for smoking related litter, dog fouling and fly posting.

Fear of crime & public reassurance

- Police Neighbourhood Specialist Teams (NST) established in North & South of District.
- Additional street lighting installed in vulnerable areas.
- Street Scene Team patrolling parks and open spaces.
- Promote 'good news' stories and crime reduction statistics.

Results

Horsham District remains the safest District in West Sussex with less crime per 1,000 population than any other District or Borough. We are also in the top three of our comparator group of MSCDRP's (Most Similar CDRP's) across the UK.

Overall crime fell by 10.7% from 6975 crimes in 2006 to 6230 crimes in 2007.

The four Wards where crime exceeded 350 crimes were Denne, Horsham Park, Billingshurst & Shipley and Chantry.

There was a small increase in acquisitive crime whilst all other crimes fell by appreciable amounts. The Detection rate for North Downs Division stands at 32% which is up both year on year and compare with the previous nine months.

National Priorities

The National Community Safety Plan 2008-2011 sets out the Government's priorities for making communities safer and this plan reflects those priorities in a local context. The National Plan puts into context the aspirations set out in "Cutting Crime – A new partnership 2008-2011" and is further explained in "Delivering Safer Communities: a guide to effective partnership working" published by the Home Office.

The guidance outlines six hallmarks of effective practice for CDRP's these are:

Hallmark 1	Empowered and Effective Leadership
Hallmark 2	Intelligence-led Business Processes
Hallmark 3	Effective & Responsible Delivery Structures
Hallmark 4	Engaged Communities
Hallmark 5	Visible & Constructive Accountability
Hallmark 6	Appropriate Skills & Knowledge

Each hallmark comprises two elements:

- New statutory requirements for partnership working; and
- Suggested practice to achieve increased effective partnership working, using the statutory requirements as a foundation.

The Flowchart at Appendix (A) shows how we see these responsibilities working in practice and should lead to the desired result of better outcomes for local communities.

A new mechanism for assessing crime & community safety will be introduced in 2008 APACS 'Assessment of Policing and Community Safety' will provide the Home Office and partners with a combined assessment tool which will help in assessing our performance against national standards. This will be accessible via the iQuanta website which currently provides CDRP's with detailed analysis of crime rates and trends and a comparison with our MSCDRP's.

The Plan will address the statutory requirements and ensure compliance, however for the sake of brevity this plan will only comment here on those requirements which are not currently in place or need improvement.

HCDRP Partnership Plan 2008-2011

For the full list of requirements visit:

<http://www.crimereduction.homeoffice.gov.uk/regions/regions00.htm>

DSC Page *	Requirement:	Action needed:
22	At least one of the representatives from each of the five RA's must hold a senior position within their home organisation.	PCT to review representation
23	There must be arrangements for appointing a chair, agreeing tenure & grounds for change.	Review chair at first CDRP meeting in 2008/09
23	At least once a year the group needs to consider whether the CDRP has the requisite skills & knowledge to meet the statutory requirements.	Review at first CDRP meeting in 2008/09
36	The strategy group will prepare an information-sharing protocol	Ascertain progress of the revised pan-sussex data sharing protocol and ensure all partners are signed.
37	Each responsible authority must nominate a designated liaison officer to facilitate the sharing of information with other partners	Each RA to nominate named officer to CDRP Board by first CDRP Meeting of 08/09
52 132 (appendix J)	Certain sets of depersonalised information must be shared on a quarterly basis	Ensure all partner agencies have mechanisms in place to comply: PCT must supply hospital admissions data for: Assault / Mental & behavioural disorders due to psychoactive substance / intoxication / domestic abuse / ambulance callouts to C&D incidents.
73	Partnership Plan must cover a three year period & be revised annually	Ensure planning cycle includes annual strategic assessment which feeds into revision of plan.
74	The Plan has to contain information about the role of each partner in supporting delivery & how this will be resourced.	Agree contributions from partners (financial and physical resource)
74	The Plan will also contain information about the way the partnership will engage with their communities	Develop and improve existing mechanisms especially in respect of rural communities.
86	The plan must set out the extent to which local people can assist in reducing C&D	Work with LAT's / Crimeproof events / Street Surgeries etc & ensure targeted approach.
101	Assess value for money of partnership activities	Ensure included in annual strategic assessment

* Delivering Safer Communities (CDRP Guidance)

Public Service Agreements

Between 2002 and 2008 a target of reducing British Crime Survey (BCS) overall crime by 15% across England and Wales to 10.5 million offences was set. There was an 11% fall overall compared with the 02/03 baseline. Horsham District CDRP had to deliver a BCS crime reduction of 10% which we are on course to deliver. For 2008-2011 there will not be a specific percentage target.

For 2008-2011 two PSA's have been set:

PSA 23: Make Communities Safer

It reflects the Government's vision that:

- Continuing to build on the significant reductions in crime achieved over recent years, fewer people will be victims of crime, especially the most serious crime – violent, drug and alcohol related crime - and the public will be protected from the most harmful offenders; and
- Local agencies will be accountable and responsive to the needs and priorities of the local community leading to increased public confidence in those agencies.

Three Priority Actions are specified:

1. **Reduce the most serious violence**, including tackling serious sexual offences and domestic violence.
2. Continue to make progress on **serious acquisitive crime** through a focus on the issues of greatest priority in each locality and the most harmful offenders – particularly drug-misusing offenders.
3. Tackle the **crime, disorder and anti-social behaviour issues of greatest importance in each locality**, increasing **public confidence** in the local agencies involved in dealing with these issues.

PSA 25: Reduce the harm caused by alcohol and drugs

Sets out how long term and sustainable reduction in the harm associated with alcohol and drugs will be achieved.

Three priority actions are specified:

1. Reducing the harms caused to the development of, achievement and well-being of young people and families.
2. Reducing the harms caused to the health and well-being of drug users and those using alcohol in harmful ways: and
3. Reducing the harms caused to the community as a result of associated crime, disorder and anti-social behaviour.

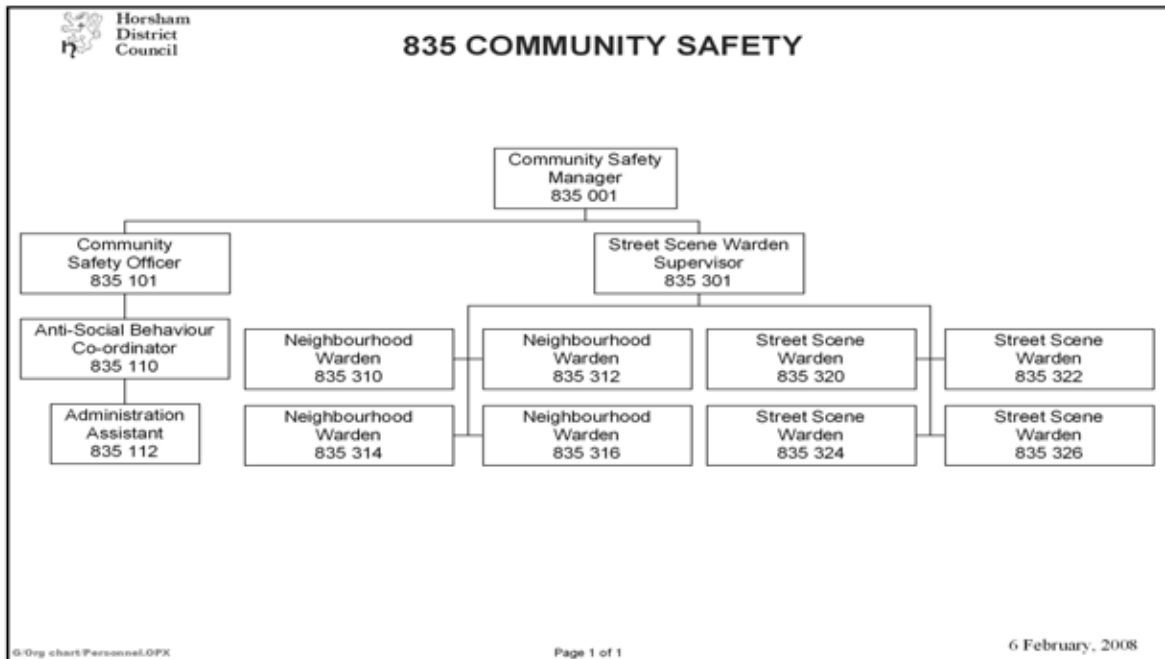
CDRP's will also contribute to delivering PSA's around early intervention, Criminal Justice, Communities, Social exclusion and Counter-terrorism. These can be seen in the flowchart at Appendix (A).

This plan will seek to support the national PSA objective by tackling those issues identified as being of the greatest importance in each locality and in doing so will support the aims and objectives of:

- **The Local Policing Plan for Sussex 2008-2011**
- **The Horsham District Council Corporate Plan 2008-2011**
- **The Horsham District Community Partnership Strategy**
- **The West Sussex County Council Corporate Plan 2008-2009**
- **The West Sussex Strategic Community Safety Partnership Agreement 2008-2009**
- **The West Sussex PCT Business Plan 2008-2009**
- **The Saxon Weald Business Plan 2008-200**

Delivery Structures

Whilst all our partners contribute to the delivery of the Partnership Plan a Community Safety Unit Co-ordinates the work of the partnership and the delivery of the Plan. This Unit is part of Horsham District Council's Community Development Department, which in turn is part of the Directorate of Community Services. The Community Safety Unit is also responsible for the supervision of the Street Scene Team, Neighbourhood Wardens and the Anti-Social Behaviour team.



With the other local authorities in West Sussex, Horsham District Council was awarded Beacon Council status for Community Safety Partnerships in 2004-2005. This rewarded the close partnership working that exists across the County and which contributed to the dramatic reduction in crime that we continue to enjoy. In January 2008 The Council was also awarded Community Safety Scheme Accreditation (under the Police Reform Act 2002) by the Chief Constable of Sussex. The award reflected the training and professionalism that went into the formation of the Street Scene Team and Neighbourhood Wardens. The accreditation also allows the Street Scene Wardens and Neighbourhood Wardens a range of powers to confiscate alcohol from young people under 18, confiscate tobacco from young people under 16, stop cyclists on pavements, require the name and address of persons acting in an anti-social manner or suspected of committing a relevant offence. The wardens are also empowered by the Council to issue Fixed Penalty Notices for a range of environmental offences, such as dog fouling and depositing litter.

Audit Commission analysis (2007) suggests that the Council performs very well in its contribution to maintaining the cleanliness of public spaces, community safety partnership working and activities to engage with the young.

The Unit has also been responsible for initiating a range of diversionary projects such as the 'Revolution' Behaviour Change Programme aimed at young people who are at risk of offending. Some of the other achievements can also be found on pages 4 & 5.

Whilst the Community Safety Manager's post is full time, all other staff members are on short-term contracts dependent on Government and Local Authority funding streams which are by no means assured. These posts will be reviewed during the time span of this plan as will other projects which could be affected by cut backs in government funding.

CDRP Structure

CDRP Board – The CDRP Board comprises one elected member from West Sussex County Council and one from Horsham District Council, senior officer level representation from HDC, WSCC, Sussex Police, Sussex Police Authority, West Sussex Fire & Rescue Service, West Sussex NHS PCT, and Saxon Weald representing the Registered Social Landlords. Observers from North Sussex Magistrates and HALC (Horsham Association of Local Councils) also attend from time to time. The Board is chaired by the Director of Community Services for HDC. Meetings take place every quarter. The Board approves the yearly Partnership Plan, sets the strategic direction for the Partnership and oversees the delivery of the Plan.

PFMG – Progress & Finance Monitoring Group

The PFMG is chaired by the Community Safety Manager and comprises Operational Manager level representation from the partner agencies. The PFMG is responsible for structuring the budget, writing the Strategic Assessment and Partnership Plan and recommending the Board the strategic direction and operational priorities for the partnership as well as monitoring the delivery of the Plan.

National Intelligence Model

The CDRP follows the National Intelligence Model (NIM) Structure. NIM was introduced under the Police Reform Act 2002 to provide an intelligence led business model for law enforcement and therefore supports Hallmark 2 – Intelligence led business processes. In Horsham District the structures which lead the operational liaison between the CDRP and Sussex Police are:

- **JAG – Joint Action Group.** A monthly meeting chaired by Sussex Police which brings together officer level representation from partner agencies and invited organisations to review crime & ASB over the previous month and decide upon partner priorities and actions. Data prepared by CADDIE analyst.
- **SIG – Signal Incidents Group.** Fortnightly meeting chaired by Sussex Police which brings together practitioner level representation from the partner agencies, reviews anti-social behaviour and signal incidents* and decides upon tasking actions for the following week. (* A signal crime is any criminal incident that causes change in the public's behaviour and/or beliefs about their security and a signal disorder is any act that breaches the rules of social order and signifies the presence of other risks. This can be social or physical in nature).
- **PPO – Prolific & Priority Offenders Group.** Monthly District and Quarterly Divisional Meeting. Is a single coherent initiative in three complementary strands to reduce crime by targeting those who offend most or otherwise cause most harm to their communities. The strands consist of:
 1. **Prevent & Deter**
 2. **Catch & Convict**
 3. **Rehabilitate & Resettle**Each strand has a specific action plan formulated in conjunction with Sussex Probation Service and whilst resource intensive has resulted in the District's most prolific offenders being identified, targeted and their offending behaviour restricted.
- **HUNT - Horsham Under 18 Nominal Targets Group**

Using the PPO model the Group will target those young people under 18 whose offending or anti-social behaviour is causing concern. By bringing together partner agencies who are interacting with the young person an action plan to deal with their behaviour will be formulated thus reducing crime and ASB.

Supporting Structures

- **LAT's – Local Action Teams.** The purpose of a LAT is to identify, plan and deliver activities to reduce crime and disorder at a very local level, utilising volunteers. The size of the area covered by a LAT will depend on factors such as the size of the community or the specific problems of the particular area. LATs may take on long-term issues for an area or they may be set up on a short-term, single-issue basis. They should be problem solving focused, utilising established problem solving processes. There are seven LAT's across the District.
- **Local Community Partnerships.** Exist in a number of our larger Villages and are sometimes associated with the LAT's. Some of the data they have gathered in conjunction with Village Action Plans have fed into the Partnership Plan
- **Older & Younger Persons Groups.** Interact with the District Council's Older & Younger Persons Officers and have contributed valuable ideas which have been integrated into the Partnership Plan.
- **Key Individuals Network (KIN).** Formed from a group of local people who live, work or regularly pass through a neighbourhood. Each PCSO will have a KIN in their area from whom they obtain community intelligence and who are key components of the neighbourhood policing approach.
- **WATCH Schemes.** The CDRP support a variety of 'Watch' schemes across the District, from the local Neighbourhood Watches to Farmwatch, Pubwatch, Horsewatch, and other thematic group

Acquisitive Crime

Acquisitive Crime covers those offences falling under the Theft Act, especially Burglary, Robbery and Theft. Burglary has been one area where small increases have been seen, although by the end of 2007 this was beginning to level out. Burglary of dwellings have a dramatic effect on victims and families and with a repeat victimisation rate of around 7% it is never too late to shut the stable door after the horse has bolted. A range of burglary prevention techniques have been utilised and will continue to be developed in this plan. The physical intervention of the Handy Van in 'target hardening' premises has proved particularly useful in reassuring older victims of crime and victims of domestic violence.

Offences of Robbery have also risen, although it should be remembered that a total of only 28 offences were recorded in the 12 months to December 2007. Robbery can have long lasting effects on victims and owing to the publicity such offences attract can increase the fear of crime and deter people from utilising public spaces, especially after dark.

Theft, especially theft from shops, contributes to bulk crime and impacts adversely upon crime recording statistics even if the individual impact is small. The Retail Crime Diversion Programme was initiated in 2007 and will be expanded in 2008-2011. It provides a cost effective way of bringing minor offenders to justice and facing the impact of their actions and contributes to the Sussex Police targets of bringing offences to justice and reducing re-offending.

Road Safety & Speed

Whilst road safety and road traffic collisions have not featured in previous community safety strategies the number of, especially young people, killed or seriously injured in road incidents over the past few years has led the CDRP to increase activity in this area. In 2006 two 'SID' Speed Indicator Devices were purchased and are now in frequent use staffed by 'Community Speedwatch' volunteers. The District has supported the 'Safe Drive – Stay Alive' theatre productions for young people and has also been running a safer driving course for young drivers whose behaviour on the road has been identified as anti social. A new sub-group will now be formed under the JAG (Joint Action Group) to liaise with other CDRP's across West Sussex and co-ordinate activity in this area.

Anti-Social Behaviour

Defined as "*Behaviour which causes or is likely to cause harassment, alarm or distress to one or more people who are not in the same household as the perpetrator*". The CDRP's response to this issue is centred on an ASB Administrator based at Horsham Police Station, and two part-time Case-workers at Steyning and Horsham. The location of these posts allows a rapid response to emerging issues and effective liaison with operational police staff on a daily basis. The effectiveness of the system has been reviewed and improvements identified and implemented. The introduction of the Street Scene Team is also contributing to the reduction in ASB and their accredited powers to seize alcohol and intervene in the early stages of bad behaviour have proved a useful tactic. The 17% reduction in criminal damage is a good indicator that our approach is effective. In 2008-2011 we intend to build on these successes by developing those interventions which have proved their worth.

Serious Violent Crime

Whilst violent crime has fallen by 31% across England & Wales since 1997 it continues to blight lives and contributes to higher levels of fear in communities. A large number of partners are involved in this agenda and initiatives exist to prevent and deter offences; detect offenders and safeguard victims; and work with offenders to tackle their behaviour.

A number of interventions over the past three years have assisted in protecting the public and assisting the police who lead in this area, especially in the field of domestic violence. The Safe @ Home scheme provides target hardening and personal security measures for victims of DV who decide to stay living in their own homes and the weekly DV drop-in provides advice and guidance. The launch of the WORTH project at Crawley Hospital will identify victims at an early stage and is likely to lead to an increase in demand for services which the plan will address. Other serious violent crime is difficult to predict, but the CDRP will continue to provide personal safety advice, especially to vulnerable client groups and initiate interventions to reduce the risk of violent crime at local level.

Alcohol related C&D, PPVC, Damage

Alcohol Related Crime and Disorder, Public Place Violent Crime and Criminal Damage -

The establishment of the Signal Incidents Group (SIG) and the Joint Agency Group (JAG) under the National Intelligence Model (NIM) framework has crystallised work in identifying alcohol related crime & disorder, public place violent crime, criminal damage and anti-social behaviour. Data is shared between the partners (subject to S.115 constraints) and participating agencies are able to contribute skills and resources. The Police Licensing Unit and the PPVC Officer (shared post) are able to put the intelligence into context. An HDC staff member interrogates the Police OIS and CIS systems to collate a weekly event log which gives an accurate and timely portrait of what is happening, when and where, which guides the deployment of resources for the week ahead.

Early intervention, especially at weekends, is key to preventing alcohol fuelled disorder and violence and the Street Scene Team work every Friday evening to bolster police resources and provide visible reassurance to the public and a deterrent to those intent on causing trouble. The CCTV network can also assist in the early detection of troublemakers and a review of the HDC system will take place to identify opportunities of making more proactive use of the system, including the introduction of an HDC control room. The dramatic fall in criminal damage is a key indicator that a visible uniform presence followed up with a robust approach to offenders can deter such offences from occurring.

Street Scene (Cleaner, Safer, Greener)

Over the past three years considerable effort has been expended in ensuring Horsham District remains a safe place in which to live, work and visit, however fear of crime and anti-social behaviour still exceeds the reality. The Clean Neighbourhoods and Environment Act 2005 expanded the duty of the Council and it's 'responsible authority' partners to include the quality of the local environment in it's duty to do all it can to reduce crime and disorder in its area, and in the development of its strategies. These concerns led to the formation of the Council's Street Scene Team of Wardens who have now gained accredited powers under the Police Reform Act 2002. This team will greatly assist the CDRP in delivering its new duties around environmental enforcement and in reducing anti-social behaviour. The powers have also been granted to the Neighbourhood Wardens at Ashington and at Steyning, Bramber & Upper Beeding. The Council has also signed up to the county-wide "All Clear" approach to graffiti and we are now in a position to address the public concerns expressed around dog fouling, litter and low level anti-social behaviour which affects the quality of life of residents of the District. The patrolling of parks and opens spaces has also been increased. This good work will be further developed in 2008-2011.

Fear of Crime / Public Reassurance

The establishment of the Police Neighbourhood Support Teams (NST's) in the south and north of the District has allowed a far better deployment of Police Community Support Officers (PCSO's) and their warranted colleagues. Having a clearly identified officer for a specific area has assisted operational working and the resolution of neighbourhood problems. Further links with the Neighbourhood Wardens and the Street Scene Team have been developed which ensures that the right resources are deployed for dealing with specific problems. Council and partner staff have also joined NST's in Street Briefings and 'road shows' across the District. The CDRP also have a press and publicity group which meets regularly to identify opportunities to publicise the work of the partnership and the crime reduction successes. The presence of additional high-visibility uniformed staff on the streets helps to contribute to public reassurance and the partnership will look to expand these opportunities in the new plan.

An increase in community participation in community safety will also be encouraged. This will build on the success of volunteering projects such as the Youth Support Team, Junior Warden Schemes and the Neighbourhood Watch Search Team, which have indicated that where a project engenders local interest then volunteers will come forward.

PSA Targets

Headline Target 2008-2011	Actions	Lead	Desired Outcome	Milestones / Progress
Make Communities Safer (PSA 23)	Build on the 11% reduction in crime in 07/08 to ensure fewer people are victims of crime – especially the most serious crime; violent, drug and alcohol related crime – and the protect the public from the most harmful offenders.	Community Safety Manager / CDRP Board	Reduce Crime by 5% by 2011	Green / Amber / Red
	Local Agencies will be accountable & responsive to the needs & priorities of the local community leading to increased public confidence in those agencies.	CSM / CDRP Board	Respond to public need / reassure local communities	
Reduce the harm caused by alcohol and drugs (PSA 25)	Identify opportunities to reduce the harms caused to the development, achievement and well-being of young people & families; the harms caused to the health and well-being of drug users and those using alcohol in harmful ways; and reducing the harms caused to the community as a result of associated crime, disorder and anti-social behaviour.	CSM / DAAT	Divert potential offenders by reducing their drug & alcohol use	

Acquisitive Crime

Priorities 2008-2011	Actions	Lead	Desired Outcome	Progress to date
Reduce Domestic Burglary	<ul style="list-style-type: none"> • Deliver 2 Crime-proof events per annum • Deliver burglary awareness interventions where peaks are detected or anticipated • Target harden vulnerable premises via handy-van 	Community Safety Unit / CPO	Ongoing reduction in domestic burglaries by 5%	Green / Amber / Red To be updated quarterly on SPARK*
Reduce Non-domestic Burglary	<ul style="list-style-type: none"> • Work with business sector to provide advice & target hardening to retail & business premises 	Community Safety Unit / CPO	Reduction in rate of non-domestic burglaries by 5%	
Reduce Robberies	<ul style="list-style-type: none"> • Deter offenders by ensuring personal safety advice is available • Robust investigation of individual offences & monitor any trends emerging 	CSU & CID	Offenders deterred & detected	
Reduce Theft from retail premises	<ul style="list-style-type: none"> • Promote retail crime diversion programme to businesses & encourage participation in shop-watch schemes 	ASB Assistant	Ensure traders participate in scheme & offences reduced	
Reduce drug related crime	<ul style="list-style-type: none"> • Working with DAAT retain current level of investment & develop joint working opportunities to tackle drug related offending • Deliver three drugs awareness & education campaigns in youth & family settings. • Initiate behaviour modification interventions for drug misusing clients 	DAAT / CSO / Community Development Addaction	Link to PSA 25 offences reduced	

Road Safety & Speed

Casualty Reduction	<ul style="list-style-type: none"> Form Casualty Reduction Group reporting to the JAG Deliver at least one other partnership initiative following formation of the group Deliver 4 Driver Training courses for AS Drivers per annum Increase the number of reported incidents of bad driving through Operation Crackdown 	NST – PS CSO	Identify opportunities to reduce casualties	
Speed Reduction	<ul style="list-style-type: none"> Develop further volunteer groups to deploy SID in identified locations across the District. NST Laser Speed Gun to be deployed in speeding zones identified by SID volunteers. 	NST & lead PCSO's	Reduce average speeds in hotspots by education & enforcement	

Anti-Social Behaviour

Reduce Anti-social behaviour	<ul style="list-style-type: none"> Implement improvements to ASB process as recommended by CDRP working group Reduce the opportunity for arson by working with communities to educate & target those at risk Develop RESPECT diversionary initiatives such as Revolution & ESCAPE to encourage sense of social responsibility in young people – Deliver three RESPECT courses each year. Work to ensure ASB posts maintained in light of funding challenges Develop Youth Support Team (YST) functions to provide volunteer support in hotspot locations 	Community Safety Officer / ASB Team WSFRS Community Safety Officer CSM / CSO CSO	Streamline & improve ASB process Inculcate culture of respect within young people Mainstream ASB post	
-------------------------------------	---	--	---	--

HCDRP Partnership Plan 2008-2011

Reduce Anti-social behaviour	<ul style="list-style-type: none"> Ensure the continued delivery of Friday night alternative programmes for 13-17 year olds Ensure the continuing delivery of outreach services for 13-17 year olds. Sustain reduction in criminal damage and reduce by a further 5% by 2011 	CSO / HDC Community Development Dept CSO / HDC Community Development Sussex Police SST ASB Team	Decrease number of young people drinking in public places 7 sessions per week delivered in parishes	
Reduce Criminal Damage				

Serious Violent Crime

To save lives, reduce harm and protect the public	<ul style="list-style-type: none"> Implement Government Action Plan for tackling violence focussing on issues of greatest priority in each locality Reduce the number of recorded incidents by 10% by 2011 Utilising new data sharing arrangements analyse PCT & Hospital data to ensure resources targeted to the right locations at the right times Revise violent crime action plan in light of GAP recommendations & support PPVC partnership officer post Continue to Develop Safe@Home scheme for victims of domestic violence and support DV drop-in, WORTH scheme and ongoing initiatives Support the establishment of MARACs (multi-agency risk assessment conferences) for critical cases of DV 	CSM PPVC Officer CSM / PCT PPVC Officer CSM DV Theme Group WSCC	Identify individuals who are at risk of involvement in serious violence as perpetrators or victims Reduction in PPVC at hot-spots Implement plan & reduce offences All victims receive timely support & advice	
Provide care and support for victims of serious violence				

Alcohol related C&D, PPVC, Damage

Reduce harm caused by misuse of alcohol	<ul style="list-style-type: none"> • Reduce crime influenced by alcohol consumption 	All partners		
	<ul style="list-style-type: none"> • Expand pubwatch scheme to larger rural villages by 2011 	C/S Officer	Expand scheme to Steyning, Billinghurst, Pulborough & Storrington by 2011	
	<ul style="list-style-type: none"> • Monitor the rate of young people who say they never drink with the intention of getting drunk by means of a lifestyle survey. • Measure alcohol harm related hospital admission rates 	PCT	Comparison with WSX (14-15's) survey 2007. Hospital Episode Statistic data (HES)	
Incorporate substance misuse advice & education into all outreach programmes	<ul style="list-style-type: none"> • Increase test purchases targeting sales to under-age persons • Regular monitoring of youth networking sites such as facebook to facilitate early intervention at large youth gatherings. • Ongoing confiscation of alcohol from under 18's in public places. 	WSCC Street Scene Team SST	Improved intelligence available to partners /opportunities for interventions actioned	

Street Scene (Cleaner, Safer, Greener)

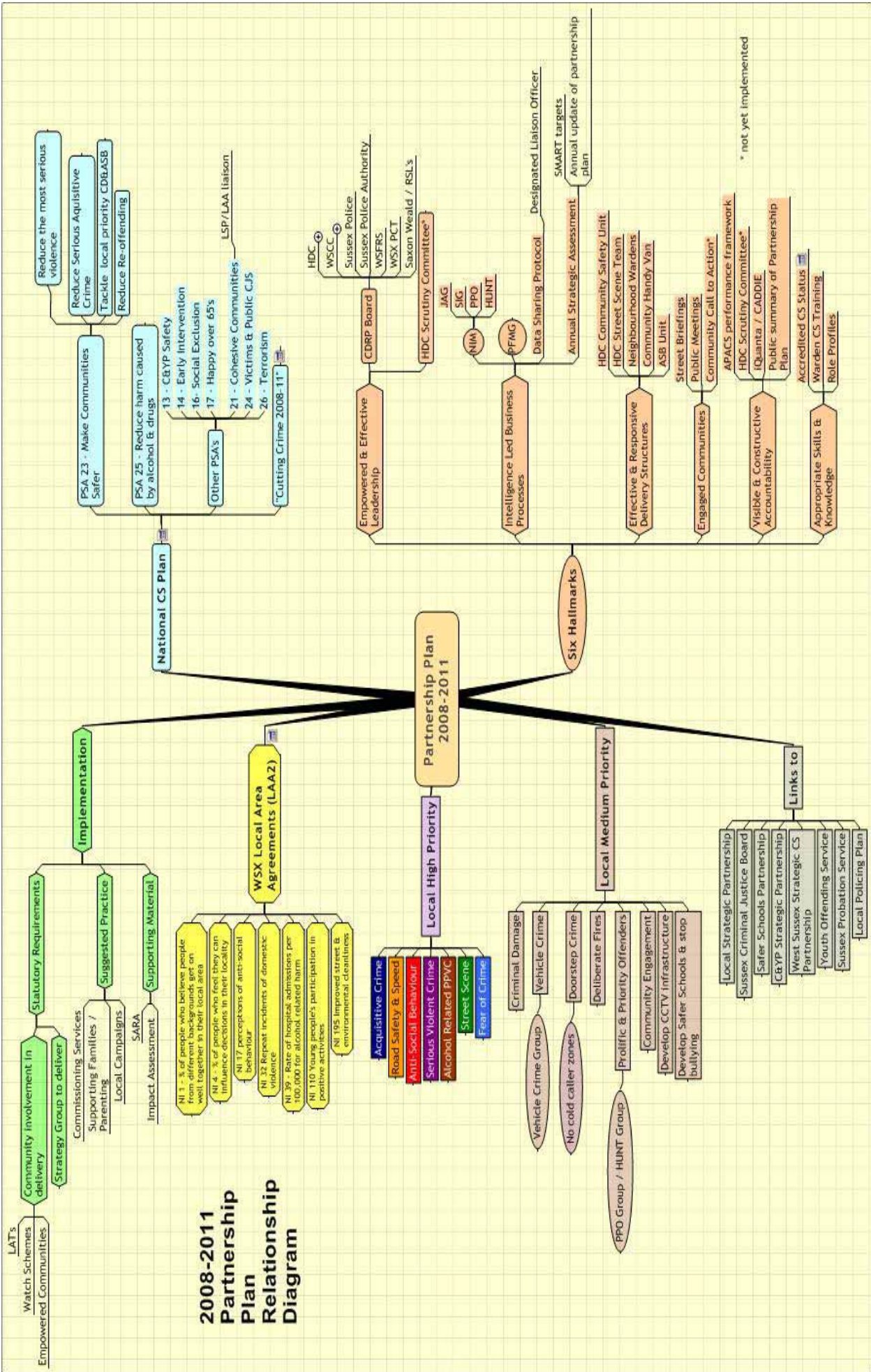
<p>Ensure Horsham District becomes safer, cleaner & greener</p>	<ul style="list-style-type: none"> Develop the HDC Street Scene Team to deliver a quality service to ensure the District remains cleaner, safer & greener. Explore funding sources to continue team beyond pilot period. Ensure graffiti is removed within 5 days of reporting in line with 'All Clear' protocols (LAA 195) (24 hours for offensive graffiti) Develop liaison with WSCC Highway Ranger Service to ensure all opportunities to make environmental improvements are identified & actioned 	<p>C/S Manager SST Supervisor</p>	<p>Implement HDC environmental policies Fund team Service standards delivered</p>	
		<p>HDC Environmental Services</p>		
		<p>SST Supervisor</p>	<p>Cleaner neighbourhoods delivered</p>	

Fear of Crime / Public Reassurance

<p>All citizens have an accurate representation of safety of District</p>	<ul style="list-style-type: none"> Develop CDRP press strategy group to ensure all opportunities to publicise safety messages are explored. Assist in delivery of NST's community engagement action plan where resources allow Street Scene Team and Neighbourhood Wardens to participate in Street Briefings where possible 	<p>CS Officer / HDC Communications Officer</p>	<p>Realistic level of public tranquility prevails</p>	
		<p>SST Supervisor</p>		
		<p>SST Supervisor</p>		

Other Initiatives

Reduce Vulnerable Victims	<ul style="list-style-type: none"> Doorstep Crime Initiatives - Promote 'No Cold Calling' Zones in partnership with WSCC T/Stnds 	WSCC T/Stnds CSO	Reduce number of vulnerable victims of crime	
Exploit & develop CCTV infrastructure	<ul style="list-style-type: none"> HDC Control & CCTV Room to be developed and becomes operational - Assimilate Emergency Planning functions into Community Safety Unit 	SCM / Emergency Planning Officer	Holistic approach to C/Safety, CCTV & Emergency Planning	
Support Parishes via Neighbourhood Wardens	<ul style="list-style-type: none"> Support & line manage Neighbourhood Warden Schemes in Ashington, Steyning, Bramber & Upper Beeding. Explore funding opportunities for schemes to continue beyond 2010. 	CSM / CSO / SST Supervisor	Improved service delivered to Parishes in scheme	
Tackle Hate Crime	<ul style="list-style-type: none"> Develop Hate Crime incident monitoring group in conjunction with WSX Racist Incident Team. Identify Reporting Centre for Horsham District Increase number of clients taking up specialist support via third sector involvement 	CSM / WSCC RIT	Racist & Hate Crime Incidents recorded & quality of service to victims improved	
Reduce deliberate & accidental fires	<ul style="list-style-type: none"> Assist West Sussex Fire & Rescue service in promoting fire safety awareness via Wardens and Handy Van services thereby reducing arson & fires 	CSM / WSFRS Div Manager	Arson and fires reduced	
Action against bullying	<ul style="list-style-type: none"> Support the 'Action Against Bullying' partnership by developing support for children & young people 	WSCC	Develop county anti-bullying policy	
Develop Safer Schools	<ul style="list-style-type: none"> Embed PCSO's in designated schools and colleges through the Safer Schools Partnership programme 	WSCC Sussex Police	Steyning Grammar School & Brinsbury College currently served	



Strategic Assessment Executive Summary 2007



The CDRP is now required to produce an Annual Partnership Plan and there is a legal requirement to develop a Strategic Assessment to guide this Plan. This is an Executive Summary of the statistics behind that assessment.

The Purpose of a strategic assessment is to:

- Assist the strategy group in revising the partnership plan;
- Understand the patterns, trends and shifts relating to crime & disorder and substance misuse;
- Help set clear and robust priorities for their partnership;
- Help ensure activity is developed that is driven by reliable intelligence and meets the need of the local community
- Deploy resources effectively and present value for money; and
- Undertake annual reviews and plan activity based on the clear understanding of the issues and priorities.

The Strategic Assessment has been produced by the Performance, Finance & Monitoring Group of the CDRP led by Mike Rumble.

The CADDIE data was produced by Michelle Partridge.

Additional data from Fiona Hargreaves, WSCC and iQuanta.

Headline Figures (12 months to Dec 07)

Total Crime - down 10.7% (6230) (6975 in 2006)

BCS Crime down 13.4% (3456)

Vehicle Crime - down 19.5 % (612)

Criminal Damage down 17.7% (1467)

Public Place Violent Crime down 13.0% (730)

Arson down 39.6% (55)

Burglary up 9.9% (778)

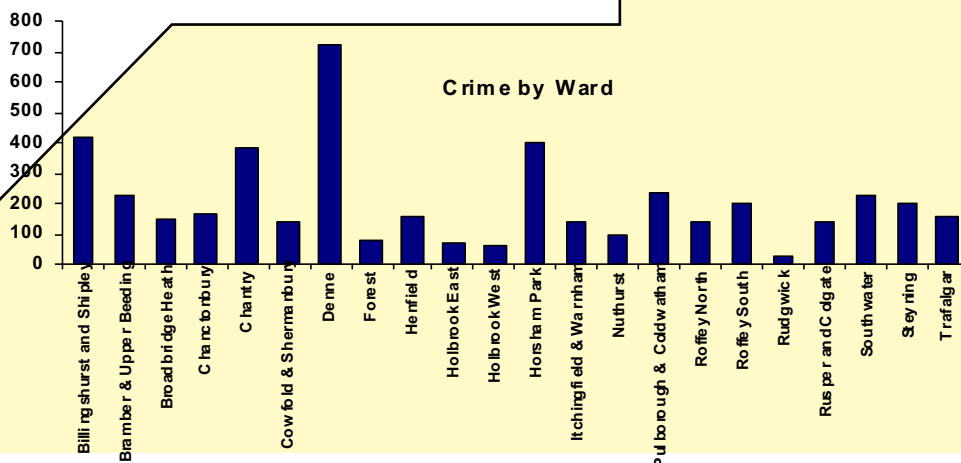
Although Burglary shows an increase on a similar period to last year this only equates to around 10 more offences

*The figures are from 1st January 2007 to 31st December 2007 * as compared to 1st Jan 2006 to 30th December 2006 (i.e. the same corresponding period the previous year).*



* Owing to the time constraints in producing this document most CADDIE data covers the nine months from January to September 2007. The headline figures shown are the most recent supplied by Sussex Police.

Horsham District remains the safest local authority area in West Sussex.



PPVC

-13%

546 offences

Public Place Violent Crime

PPVC covers a broad range of offences against the person including assault not causing injury, assault occasioning actual bodily harm, public order act offences, rape and racially aggravated offences.

Offences were recorded in the review period. 23% were committed in Denne Ward followed by 12% in Horsham Park Ward and 10% in Billingshurst & Shipley. Injury only PPVC decreased both year on year and in the 9 months under review. Horsham is the 3rd safest for PPVC in our reference group of 14 most similar CDRP's.

The majority of both victims and offenders were male between 16 and 20 years of age.

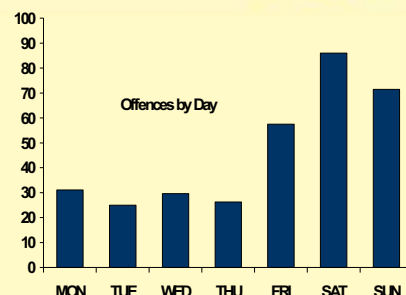
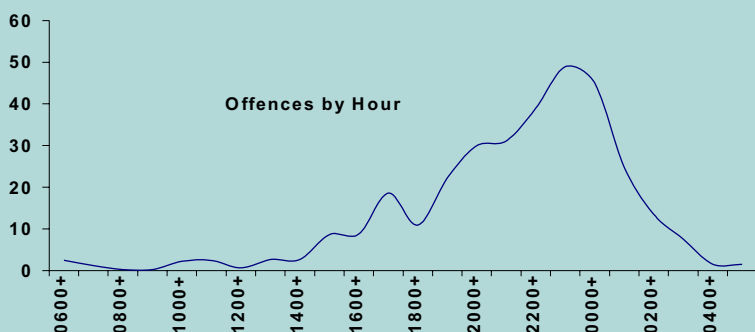
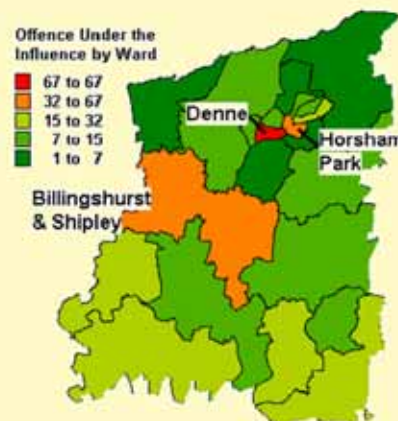
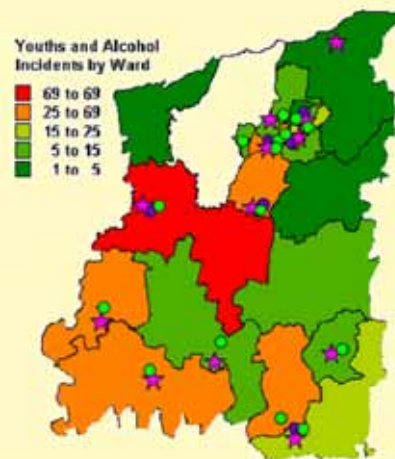
Alcohol Related

Using the key words YOUTHS and ALCOHOL 331 police incidents were found - Billingshurst, Upper Beeding & Bramber being the most prolific Wards.

28 reports of underage alcohol sales were reported to trading standards and 37 test purchase operations carried out, of which 8 resulted in sales and fixed penalty or court action followed.

Pubwatch has had a positive impact on the licensed trade & the banning system has deterred those intent on causing trouble.

Alcohol contributes to a range of violent offences and to anti-social behaviour and low level damage. Fridays and weekends in the late hours to midnight are still key times for these offences to occur.

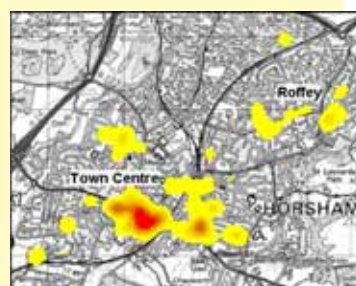
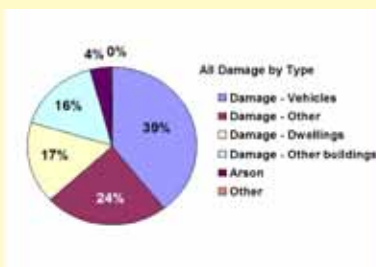


Criminal Damage

1096 offences

-18%

Is an all too visible indicator of anti-social behaviour and the dramatic drop in offences is a key indicator that initiatives taken to reduce such offences are working. 39% of the offences were against vehicles with the majority taking place in **Denne & Chantry Wards**. 414 offences took place in Horsham Town with a smaller amount occurring in the Roffey area. Not all instances of damage are reported. Repairs to damaged buildings and property cost councils and partner agencies thousands of pounds every year. Saxon Weald spent over £7,500 repairing damage caused on their estates, whilst HDC Housing Department spent over £8,000 repairing damage (the majority of which occurred to just two flats). HDC Parking Services spent £1,600 on removing graffiti in the Forum multi-storey car park. The peak month for damage was April (145) the lowest was in September (106).



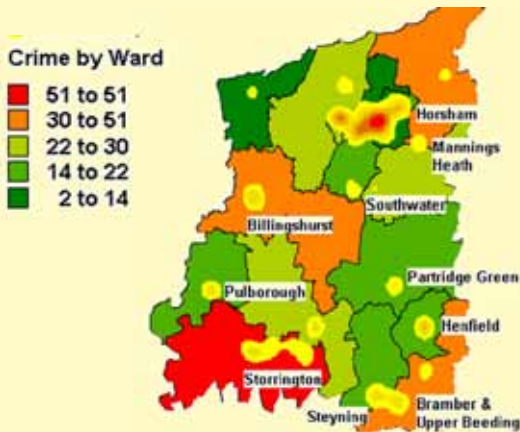
Within the mapped area there were 414 damage offences >

Vehicle Crime

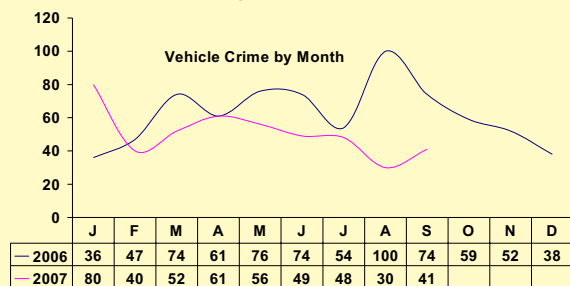
457 offences

-20%

A total of 311 'Theft from' and 146 'Theft of' offences were recorded across the District. Chantry, Bramber & Upper Beeding, Billingshurst, Rusper & Colgate were the key hotspots. This appears to be a more rural crime than an urban one with beauty spot car parks continuing to attract unwanted attention.



The peak month was January (80) with the low in August (30). An ad-hoc vehicle crime group chaired by the District Commander is re-convened whenever a spike in vehicle crime is apparent. A number of technical aids have assisted in arresting vehicle thieves.

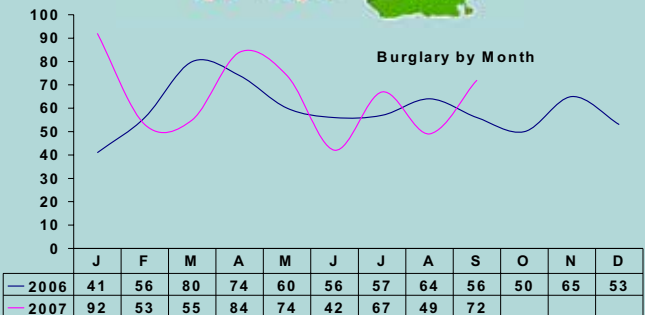
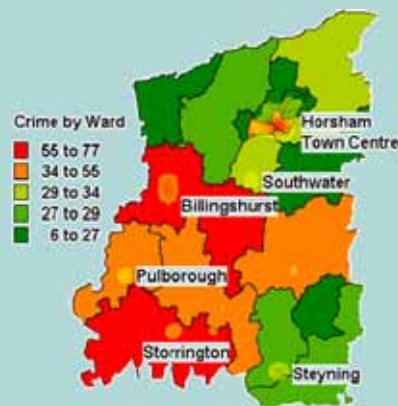


Domestic Burglary

224 offences

+7.2%

Whilst enjoying one of the lowest rates of burglary in our MSCDRP group this category has shown a slight increase of around 8 more offences. **179 dwelling burglaries** and **409 non-dwelling burglaries** occurred. Again rural offences were more prevalent than urban with Billingshurst and Chantry and Chanctonbury Wards heading the table. Burglary peaked in January with 92 offences and dropped in August with 49. Non-dwelling offences included garden sheds, garages, stables and outhouses. Further analysis needs to be done on 'non-dwelling' incidents to see whether any further crime prevention opportunities exist.



Doorstep Crime

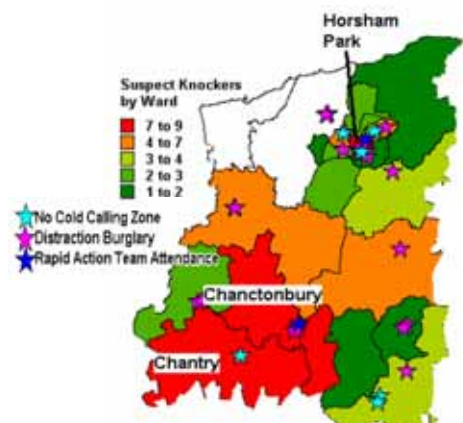
Includes incidents reported to WSCC Trading Standards as well as the Police. These incidents include bogus callers, fraudulent traders or persons charging excessive amounts for simple tasks.

21 distraction burglaries

65 incidents of suspicious callers.

The majority of these victims are over 65. North Downs Division are currently reviewing crime where victims were over 75 years, whilst only 2% of victims over a 3 1/2 year period were over this age they are one of the most vulnerable.

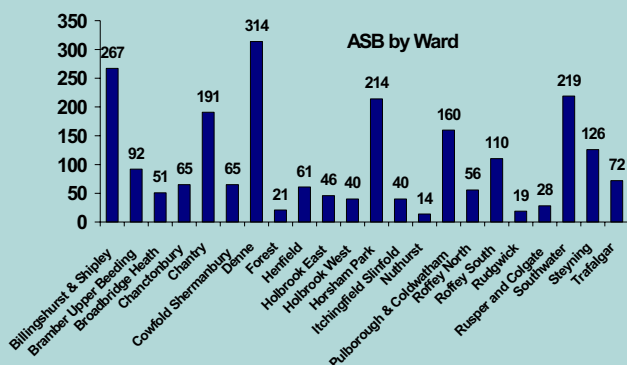
Storrington recorded 24 burglaries where victims were over 75, the highest in the Division, although only 2 of these burglaries were distraction offences. Further work must take place with this client group to ensure they are safeguarded and to reduce the fear of crime. The Rapid Action Team from Trading Standards are available to attend incidents where they can intervene if it is suspected that fraudulent traders are at work.



Anti-Social Behaviour

2271 incidents

ASB is defined as: **“Behaviour which causes or is likely to cause harassment, alarm or distress to one or more people who are not in the same household as the perpetrator”**. The data was researched in CADDIE by selecting all incidents classified as rowdy nuisance, environmental damage and littering.



Searching on the keywords drink / drinking / drunk or alcohol revealed 75 incidents in Billingshurst, 60 in Denne, 45 in Horsham Park and 33 in Chantry. Incidents are further broken down in the full Strategic Assessment by Ward and type and cover youths / motorcycles / noise / alcohol / Damage / fight / threats.

The Police NST's and the HDC Street Scene Team have been working to resolve a diverse range of neighbourhood issues and an improved detection rate and decreased levels of criminal damage have resulted. A lot of incidents are perceived differently by those reporting them, so it is difficult to analyse success accurately, however the warning letters sent by the ASB co-ordinator are thought to have an 80% success rate.

The Revolution Programme targeted at those young people who have or are about to receive an ABC is also showing promising results and allowing young people to experience constructive alternatives to bad behaviour.

Seven Local Action Teams (LAT's) continue to operate and provide useful community intelligence and contribute to resolving neighbourhood problems. The weekly Signal Incidents Meeting is an effective way of sharing partner data but needs to co-ordinate its actions and outcomes in a more consistent way.

The CDRP has a structured, responsive and effective approach to reducing ASB which is gradually eroding the problem across the District.



Domestic Violence

263 crimes with DV marker attached



Any incident of threatening behaviour, violence or abuse (psychological, physical, sexual, financial or emotional) between adults who are, or have been intimate partners regardless of gender.

It will also include family members, for example Mother, Father, Son, Daughter, Brother, Sister, Grandparents, In-laws and Stepfamily

The two most commonly recorded DV offences were ABH (39%) and common assault (37%). DV accounted for 6% of crime overall. Denne & Billingshurst contained the greatest proportion of crimes. 82% of victims were female and 18% male, most being between the ages of 25 and 44. Responses in the District have included the introduction of the 'Safe @ Home' scheme providing target hardening for those victims who have stayed at home and where the offender has left.

Racist Crime

16 offences

Whilst the District has a minority ethnic population of around 2% it is interesting to note that 37% of victims were white europeans. 69% of the offences were harassment, 19% common assault and the remainder ABH or fear of violence. The WSCC Racist Incident Team (RIT) collates data from a wide range of sources which can help in assessing trends. Work will take place in 2008 to increase the range of locations where incidents can be reported.

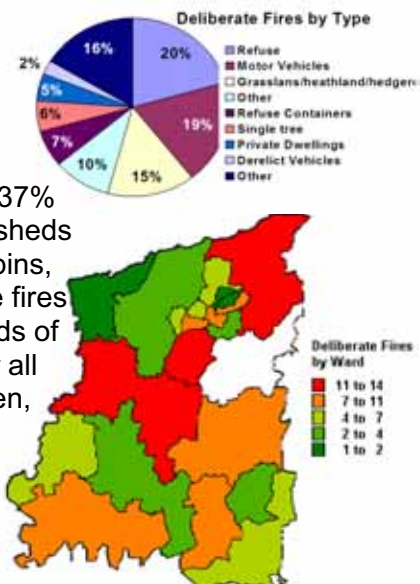
Denne	5	31%
Steyning	2	13%
Billingshurst and Shipley	2	13%
Pulborough and Coldwatham	2	13%
Roffey South	1	6%
Broadbridge Heath	1	6%
Henfield	1	6%
Horsham Park	1	6%
Cowfold & Shermanbury	1	6%
Total	16	100%

PPO's Prolific & Priority Offenders - There are 15 PPO's in the District scheme, 6 are currently under intensive supervision in the rehabilitate & resettle strand, 3 are at liberty under Catch & Convict and 1 is on remand. The scheme provides an effective method of monitoring those offenders who are responsible for an above average rate of offending which impacts upon the community.

-40%

Deliberate Fires 122 fires

122 fires were classified by WSFRS as deliberate in the review period. 37% were listed as primary which indicates insurable items such as houses, sheds or vehicles. The other 63% were listed as secondary indicating fires in bins, rubbish and derelict cars. There has been a large reduction in deliberate fires despite a busy April. Umbers of this type of deliberate fire peak in periods of hot, dry weather. The Horsham Station ground has been the busiest for all types of deliberate fire. Retained Stations are situated at Partridge Green, Steyning, Billingshurst, Storrington and Henfield.



Road Traffic Collisions

WSCC Highways and Transport recorded **284** accidents in the District – resulting in 378 casualties. 25 of these casualties were children under 16. 83% of casualties were classified as slight. There were five fatalities .

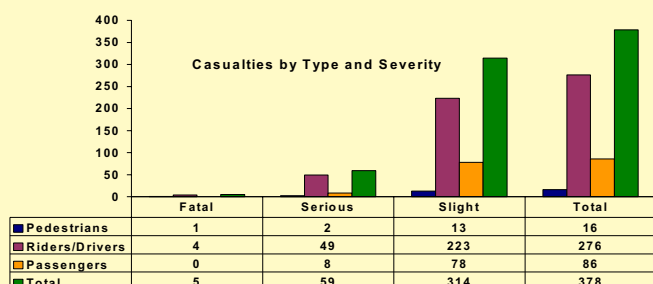
39% of the accidents occurred in 60 mph areas with 30% in 30 mph zones; 14% in 70 mph areas; 11% in 40 mph and 6% in 50 mph zones. The majority of the accidents involved car drivers between the ages of 30 and 59.

Injury accidents have also taken up a great deal of Fire & Rescue Services resources where specialist rescue, extraction or fire extinguishing have been required.

The CDRP has not had a specific remit around accident prevention although it has facilitated the purchase of two Speed Indication Devices (SID) in use in the south and the north of the District under the aegis of 'community reassurance'.

The CDRP also run anti-social driving days aimed at young drivers whose behaviour on the road has led to cause for concern, this will often be incorporated into an Acceptable Behaviour Contract (ABC) and already involves Fire & Rescue Service.

There is now a move at County level to involve CDRP's more in this agenda, although WSCC Highways and Sussex Police should continue to lead in this area.



Substance Misuse

160 drug related crimes

Were recorded in the review period, the vast majority (95%) were for possession of a controlled drug. 128 offences involved Cannabis or Cannabis Resin, which equates to 80% of all drug offences. Between April and September 410.21 grams of herbal cannabis, 72.4 grams of cannabis resin and 37 cannabis plants were seized.

Between 1st April and 30th September 2007 54 drug seizures of drugs other than cannabis took place with Cocaine (57% of total) outweighing all other drugs. 6 Seizures of crack cocaine took place reflecting the national picture that this drug has not had the impact on the UK which was originally predicted.

Between April 2006 and March 2007 – 96 people were referred to drug services in the Horsham District, of which 75 attended triages for assessment and referral. 43 triages were made to structured treatment programmes and 2 to residential rehabilitation services.

The main problem drugs were recorded as:

- **Opiates – 53%**
- **Cocaine / Crack – 21%**
- **Cannabis – 16%**
- **Other – 7%**
- **Benzodiazepines – 3%**

Between April 2006 and March 2007 – **89 persons were referred to alcohol services** in the District, of which 56 attended triages. 25 persons were referred to structured day programmes and 1 to residential rehabilitation services.

Cleaner, Safer, Greener Communities

The Clean Neighbourhoods & Environment Act 2005 amended S.17 of the Crime & Disorder Act to include a duty to prevent other behaviour adversely affecting the local environment. This reinforces new local authority powers under the CNEA to tackle abandoned vehicles, litter and refuse, graffiti and other defacement, waste, dogs, noise and local environmental quality. This legislation will allow local authorities and CDRP's greater enforcement powers to tackle enviro-crime. The establishment of the Street Scene Team has allowed more resources to be devoted towards these aims.

Overall environmental Standards in Horsham District have been rated by the Government for 2006/2007:

- **Graffiti – Good**
- **Flyposting – Good**
- **Flytipping – Good**
- **Litter – Satisfactory**
- **Detritus* – Unsatisfactory**

The HDC Clean Neighbourhoods (Prevention / Enforcement) Strategy sets out to improve environmental quality through co-ordinated awareness, education and enforcement campaigns and the Street Scene Team will be working closely with environmental services and WSCC Street Scene Unit to realise its aims.

PUBLIC PERCEPTION

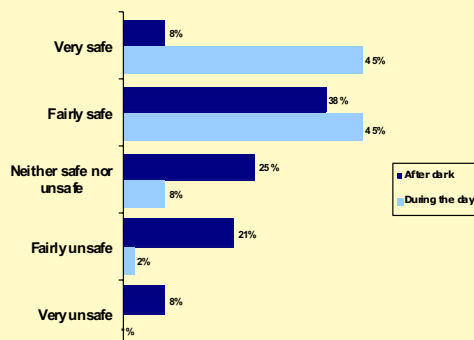
The gap between the perception of crime and disorder and the reality has always been large and despite much effort by the CDRP and its partners it is always likely that the fear of crime will outweigh the actual chances of becoming a victim of it.

Every three years a consortium of local authorities in West Sussex undertake a Best Value General Survey using a random sample of local addresses drawn from the Post Office mail users address file.

As in previous years questions were asked about crime and anti-social behaviour.

In response to the question "How safe or unsafe do you feel when outside in Horsham at night and during the day?" the following responses were elicited:

(QB7/8) How safe or unsafe respondents feel when outside in Horsham at night and during the day (respondents providing a valid response)



BASES VARY
* INDICATES % < 0.5

The figure of 29% feeling fairly or very unsafe after dark is still a worrying one and probably based on perception and the fact that a lot of older people do not venture outside after dark. These perception figures (both for day and night) have hardly moved since the 2003 Survey where the same questions were asked.

In June 2006 1,001 Horsham District residents responded to a Sussex Police Survey and indicated that the following issues were a problem in their area:

- **Speeding Motorists – 76%**
- **Young people hanging about – 61%**
- **Litter & Rubbish – 61%**
- **Dog Fouling - 53%**
- **Vandalism - 53%**
- **Graffiti - 38%**
- **Cycling or skateboarding on pavement – 28%**
- **Noisy Neighbours 21%**

Information

This Executive Summary is supplemented by the full Strategic Assessment and the CADDIE data document which are available on the CDRP website www.communityzero.com/safehorsham If access is required to this site for legitimate research purposes please Contact the Community Safety Unit on 01403 215116.