

Horsham District Council Local Planning Authority

Town and Country Planning Act 1990

Planning and Compulsory Purchase Act 2004

Regulation 30 Neighbourhood Planning (General) Regulations 2012 (as amended)

Storrington & Sullington and Washington Neighbourhood Plan 2018-2031

MODIFICATION STATEMENT

1.0 Introduction

- 1.1 Section 61M(4) of the Town and Country Planning Act 1990, as applied to Neighbourhood Plans by Section 38C(2)(c) of the Planning and Compulsory Purchase Act 2004, enables a Local Planning Authority to modify a Neighbourhood Plan they have made for the purpose of correcting errors. The relevant qualifying body must consent to the modification.

2.0 Background

- 2.1 Storrington & Sullington and Washington Neighbourhood Plan was 'made' on 4 September 2019. Horsham District Council has received a request from a local resident to undertake a minor correction to Inset Plans 2 & 3 for purposes of clarity. Storrington & Sullington Parish Council Parish Council, as the relevant qualifying body, has been informed by Horsham District Council, as the Local Planning Authority, the intention to correct an error in its Neighbourhood Plan relating to Policies Map: Inset 2 & 3.
- 2.2 A drafting error in relation to Inset Maps 2 & 3 map has been identified and discussed in greater detail in Section 3 of this statement. This modification statement sets out Horsham District Council's modification to rectify the situation and correct the error by substituting replacement maps.

3.0 Modification

POLICIES MAP: INSET 2 & 3

- 3.1 Policy 16 of the Storrington & Sullington and Washington Neighbourhood Plan designates land at Sandgate Park as a Local Green Space. Delineated as Site 19 on the existing Policies Map: Inset 2 & 3, the local green space designation includes land west of the property 'Tiptoe', which is NOT part of designated local green space (Please refer to Appendix A of this statement). The Neighbourhood Plan (Policies Maps: Inset Map 2 & 3) is therefore being modified to remove this land from the designation. Maps B and C delineates the correct Built Up Area Boundary in relation to Policy 16: Local Green Spaces. The modification is summarised in the Table below:

Page and Map Reference	Modification	Justification
Page 47 Policies Map Inset 2 & 3 (in reference Local Green Space 19. Sandgate Park)	Substitute Maps A & B with the correct delineated curtilage as highlighted by Maps C & D to exclude the adjacent land to reflect the correct boundary.	For purposes of correcting a drafting error and to accord with the text as stipulated by Policy 16: Local Green Spaces

Signed:



Councillor Claire Vickers
Cabinet Member for Planning and Development
Date: 29 June 2020

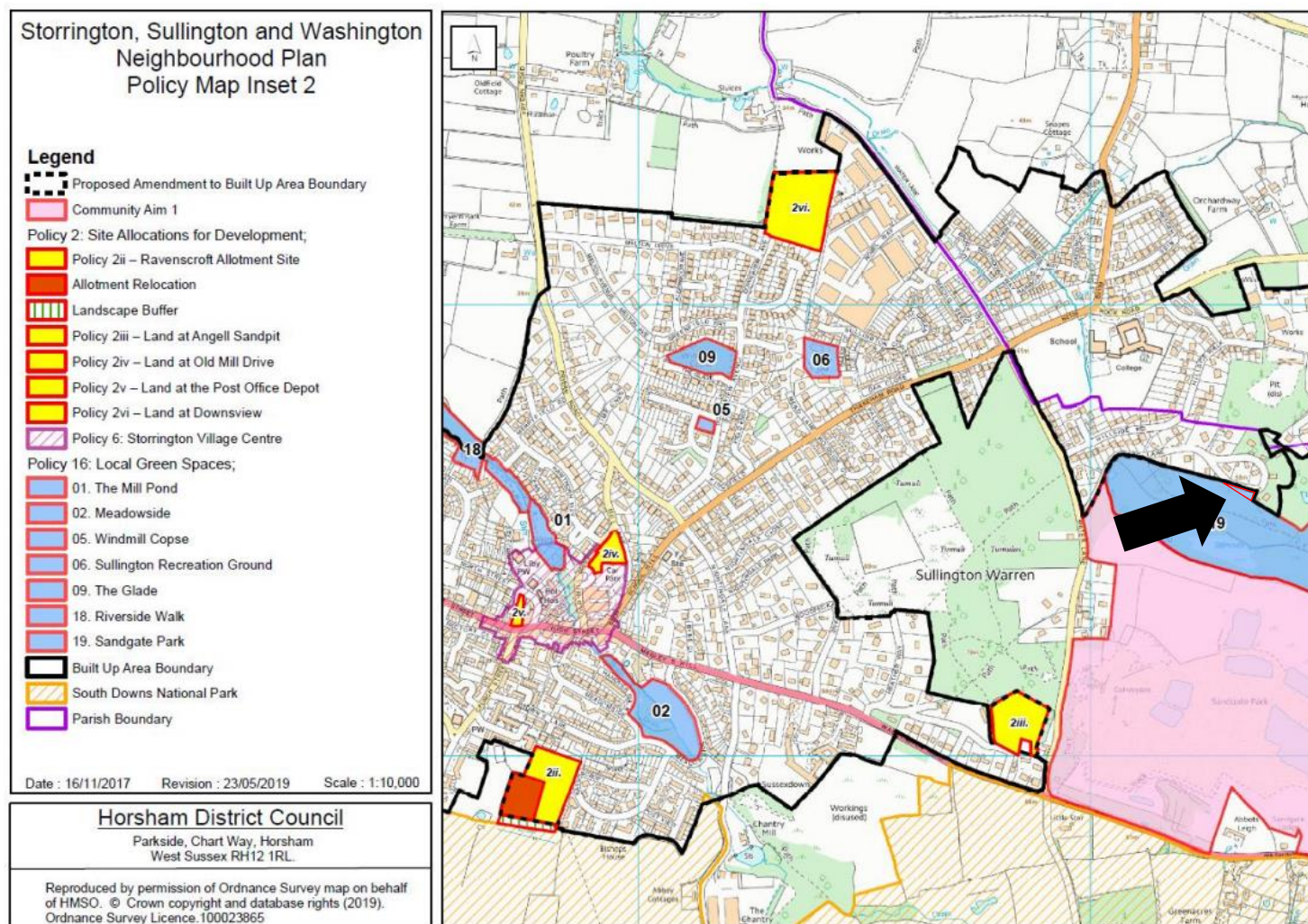
Appendix A

Map A.



Horsham
District
Council

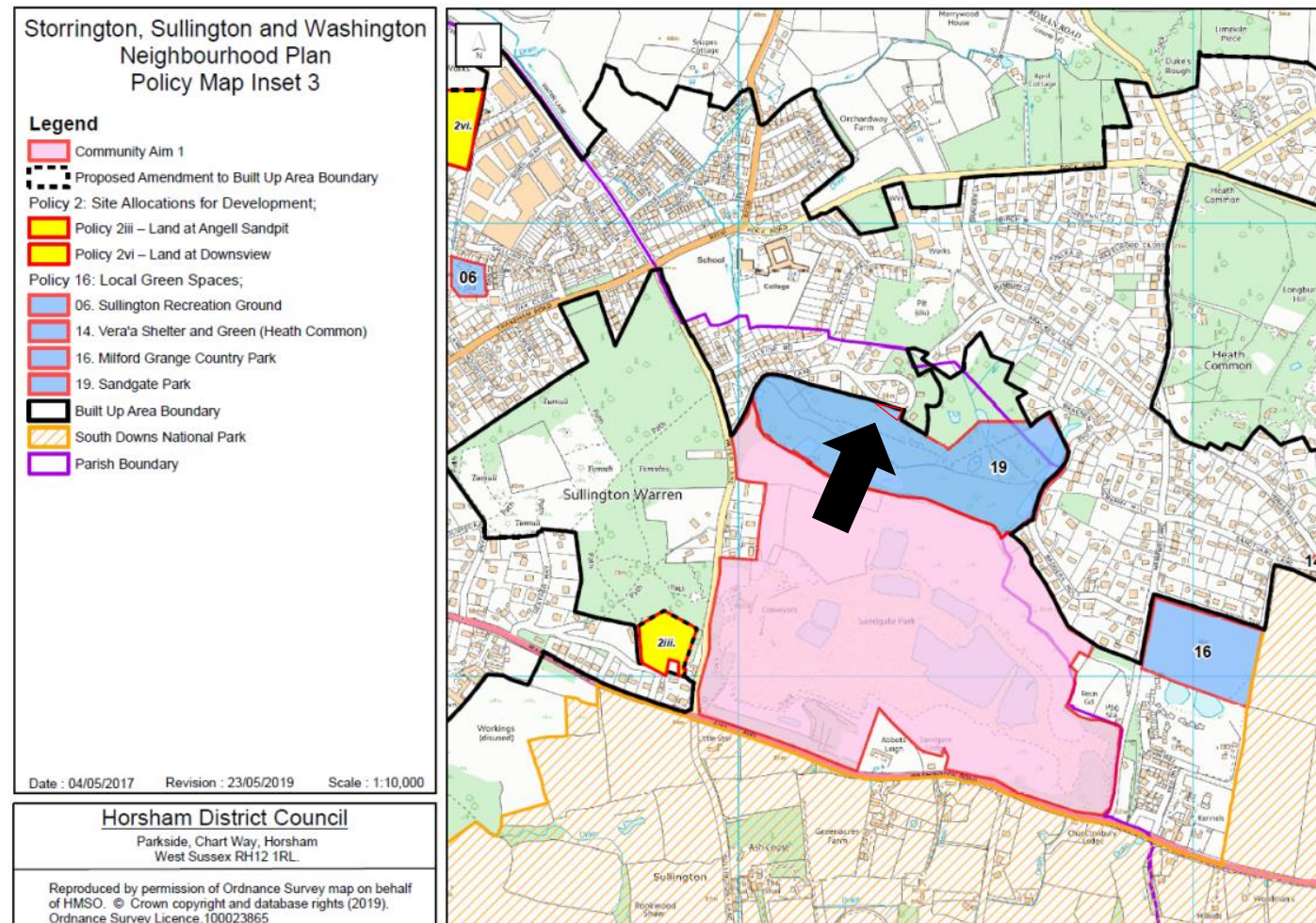
Policies Map Inset 2





Map B.

Policies Map Inset 3



Map C (Inset Map 2 - revised map)

Storrington, Sullington and Washington Neighbourhood Plan Policy Map Inset 2

Legend

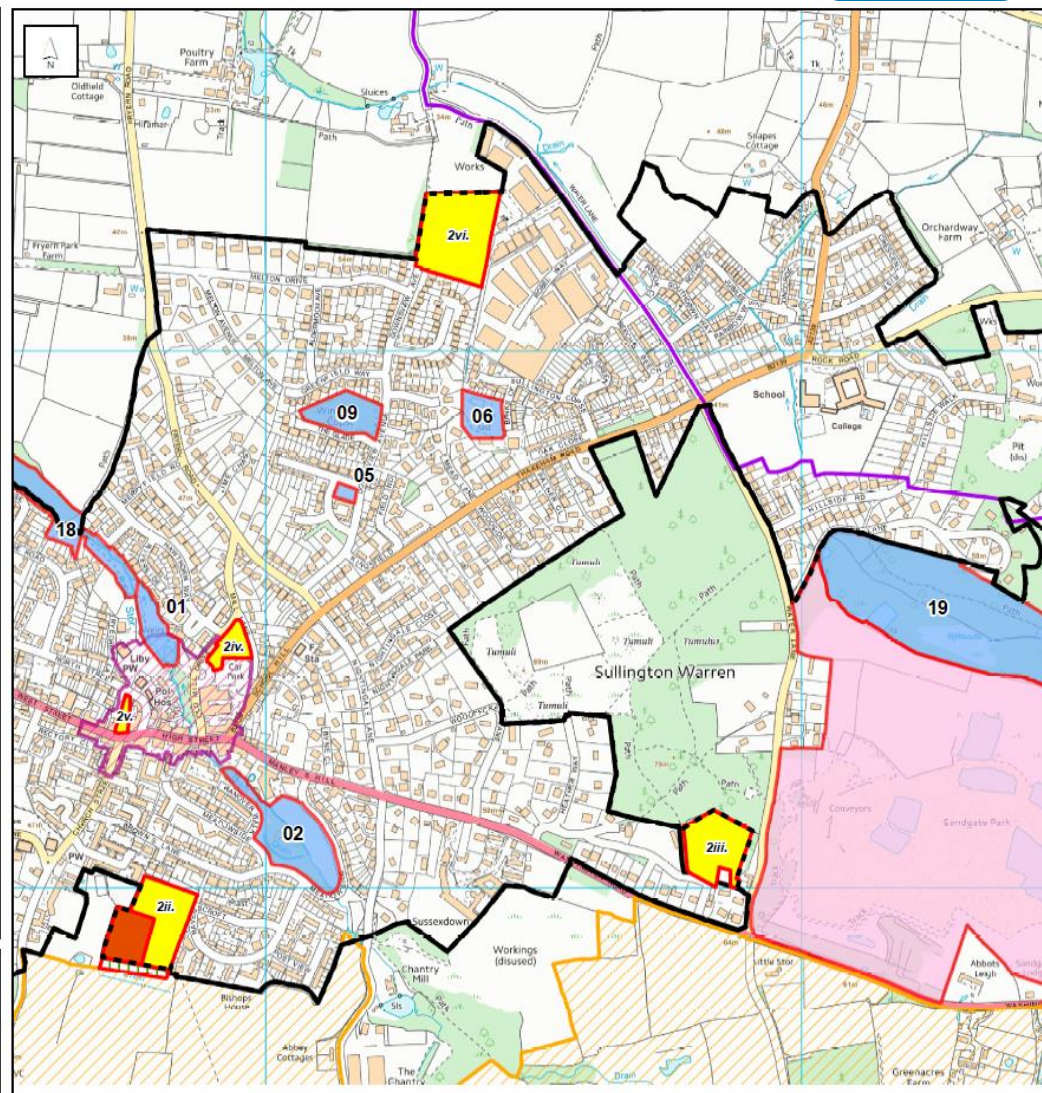
- Community Aim 1
- Policy 2: Site Allocations for Development;**
- Policy 2ii – Ravenscroft Allotment Site
- Allotment Relocation
- Landscape Buffer
- Policy 2iii – Land at Angell Sandpit
- Policy 2iv – Land at Old Mill Drive
- Policy 2v – Land at the Post Office Depot
- Policy 2vi – Land at Downsview
- Policy 6: Storrington Village Centre
- Policy 16: Local Green Spaces;**
- 01. The Mill Pond
- 02. Meadowside
- 05. Windmill Copse
- 06. Sullington Recreation Ground
- 09. The Glade
- 18. Riverside Walk
- 19. Sandgate Park
- Proposed Amendment to Built Up Area Boundary
- Built Up Area Boundary
- South Downs National Park
- Parish Boundary

Date : 16/11/2017 Revision : 01/10/2019 Scale : 1:10,000

Horsham District Council

Parkside, Chart Way, Horsham
West Sussex RH12 1RL

Reproduced by permission of Ordnance Survey map on behalf
of HMSO. © Crown copyright and database rights (2019).
Ordnance Survey Licence. 100023865



Map D (Inset Map 3 - revised map)

