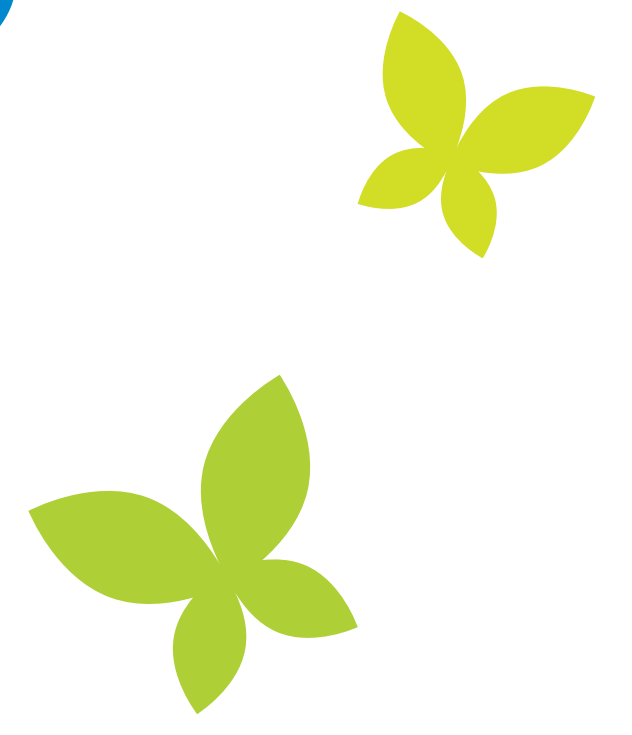


What issues will the Local Plan address?



Our new Local Plan will run from 2019 and to 2036. It will contain policies on the economy, housing and the environment.

Employment

We need economic growth to help retain and grow existing businesses, to attract additional employers into the District and to minimise commuting. We also want our towns and villages to remain attractive places to visit suitable for changing shopping habits.

Housing

The government has set a minimum housing target for our District of 965 homes a year. Government also tells us to work with Councils nearby, such as Crawley, Brighton and Worthing, to see if we can meet any of their needs. Where housing development does take place we need to ensure it is the right type and size and we provide housing that everyone can afford.

Communities

New development needs to provide schools, open spaces, footpaths and road upgrades that people need to lead happy and healthy lives. The Council is not able to deliver all these needs ourselves, (for example health care), so we work very closely with other parts of Government to make sure they know what is needed.

Environment

New development must deliver a 10% improvement in biodiversity, and address climate change. We will expect new development to be well designed.



Find out more and have your say by registering online at:

www.horsham.gov.uk/localplanreview

Email: strategic.planning@horsham.gov.uk

Telephone: 01403 215100