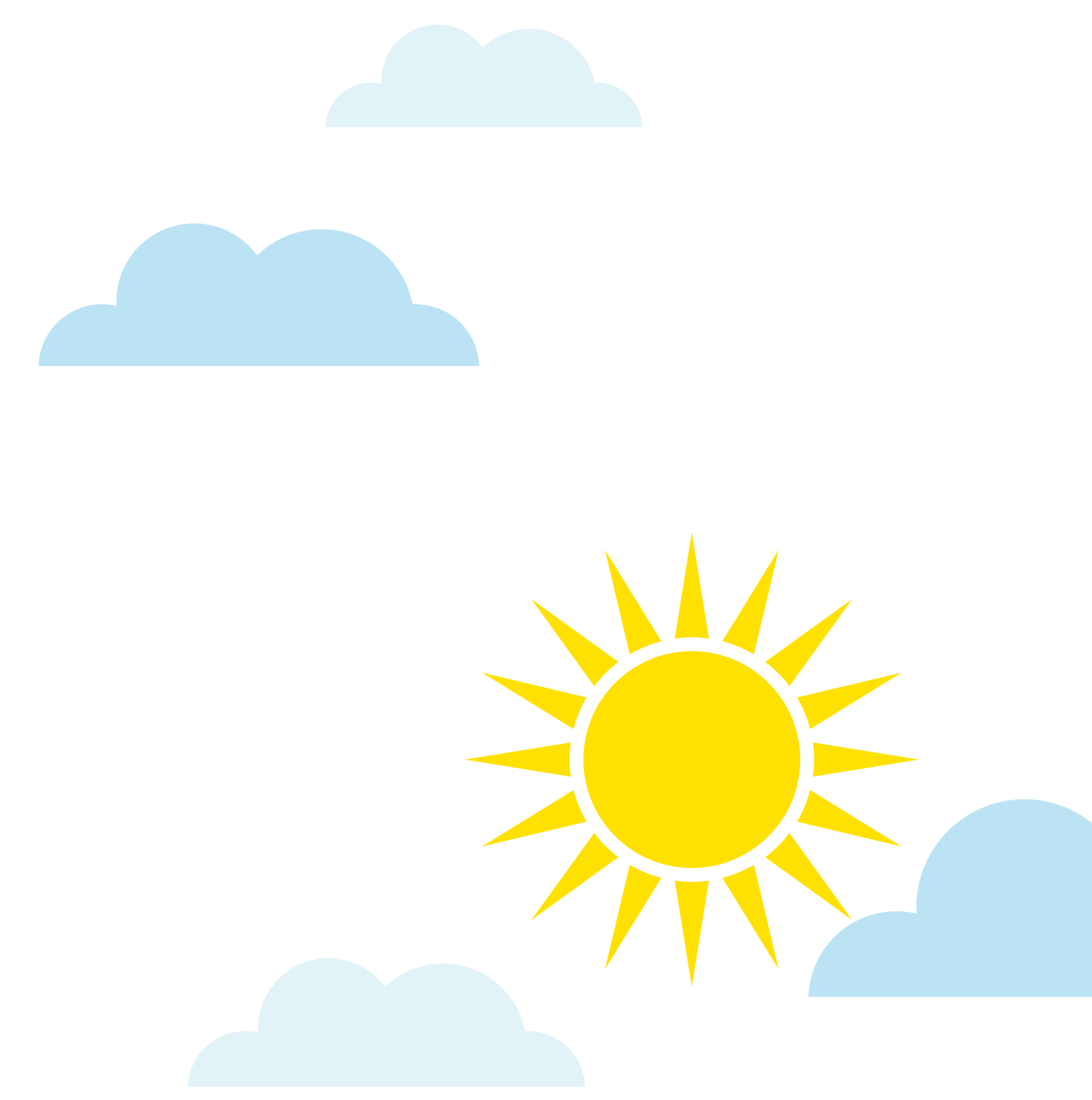
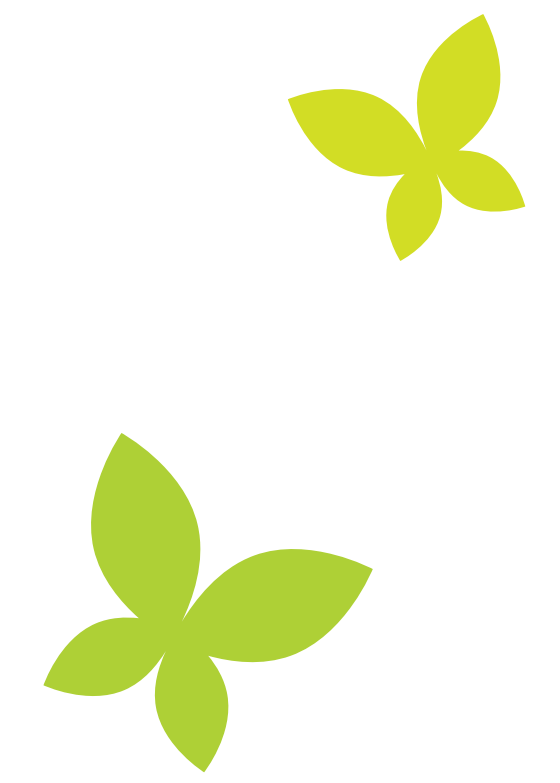


Planning for new homes



The scale of increase that the government is asking for is an unprecedented challenge for this District.

- The Government has set a minimum target for our District of at least 965 new houses each year to 2036.
- There is also a legal requirement for this District to consider whether we are able to provide new homes for our neighbouring authorities, such as Crawley or the south coast if they cannot meet their own housing requirements.



Housing targets

We are considering the following three different housing targets for the Local Plan and we are keen to get your views on what it should be.

1,000 homes per year

This would slightly exceed the minimum local housing need as determined using the Government's standard formula. It provides a small margin of flexibility, but would not provide additional housing towards the unmet housing needs of Crawley and the Coastal Sussex area.

1,200 homes per year

This would exceed the local housing need. It would provide around 200 homes each year to help meet the unmet housing needs of Crawley in particular, and a small element in the Coastal Sussex area.

1,400 homes per year

This would exceed the local housing need and provide around 400 homes each year to help meet the unmet housing needs of Crawley and the Coastal Sussex area.



Find out more and have your say by registering online at:

www.horsham.gov.uk/localplanreview

Email: strategic.planning@horsham.gov.uk

Telephone: 01403 215100