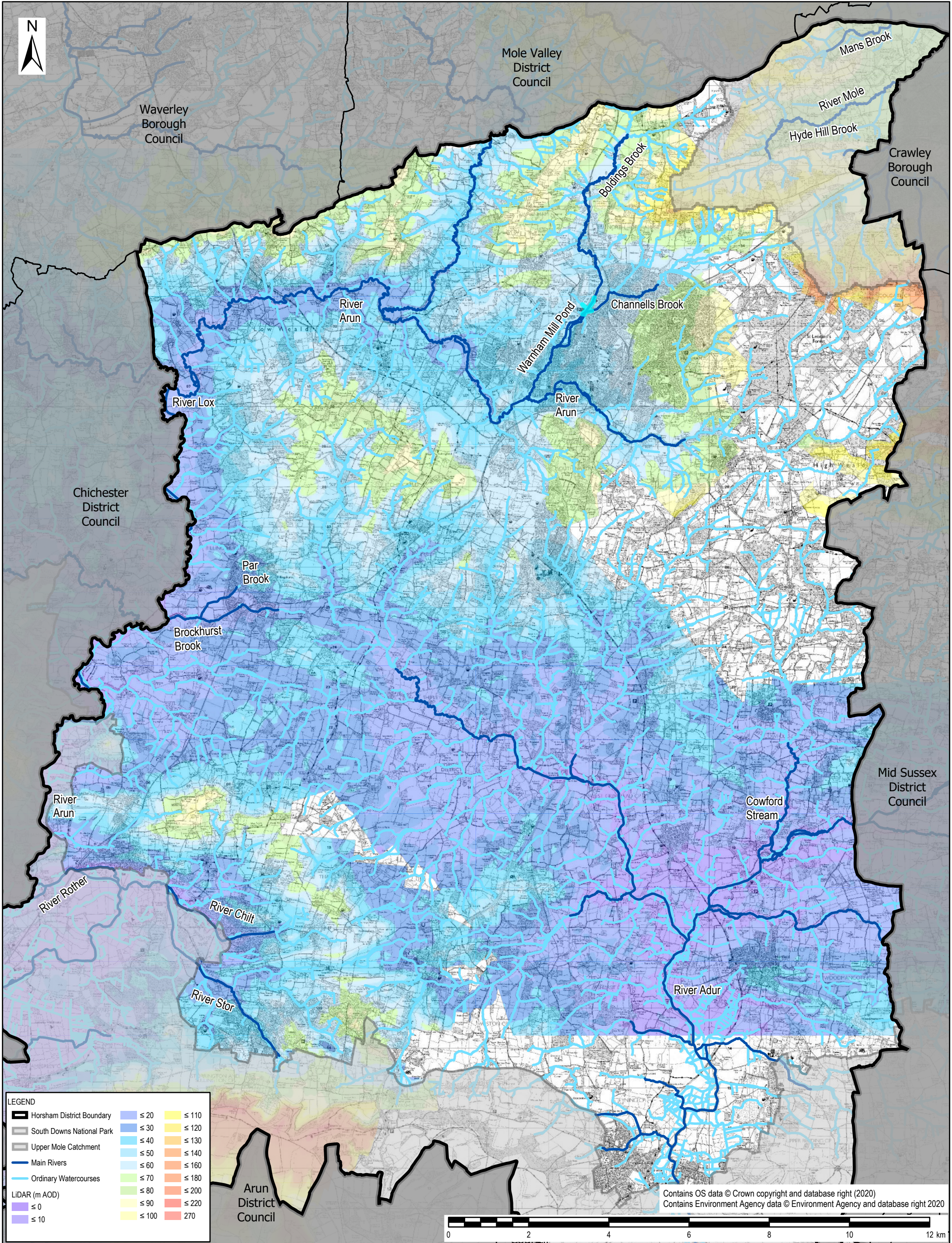


File Name: \\nu.aecomnet.com\EMIAUK\UKBAS\Jobs\PR-427626 - Horsham SFRA\900_CAD_GIS\920_GIS



<div>Project Title/Drawing Title</div> <div>HORSHAM DISTRICT COUNCIL SFRA</div> <div>FIGURE 1- TOPOGRAPHY, MAIN RIVERS AND ORDINARY WATERCOURSES</div>	<div>Notes</div> <div>1. Light Detection and Ranging (LIDAR) is an airborne mapping technique, which uses a laser to measure the distance between the aircraft and the ground.</div> <div>2. This dataset has a spatial resolution of 1m. The Environment Agency's LIDAR data archive contains digital elevation data derived from surveys carried out since 1998.</div> <div>3. The Environment Agency typically fly LIDAR along the river corridors and this accounts for the missing coverage over parts of the District.</div>	<div>Client</div> <div>HORSHAM DISTRICT COUNCIL</div>			<div>AECOM</div>	
		<div>Drawn</div> <div>SB</div>	<div>Checked</div> <div>SL</div>	<div>Approved</div> <div>EC</div>	<div>Midpoint</div> <div>Alençon Link, Basingstoke</div> <div>Hampshire, RG21 7PP</div> <div>Telephone (01256) 310200</div> <div>Fax (01256) 310201</div> <div>www.aecom.com</div>	
		<div>Date</div> <div>09/01/2020</div>	<div>Scale @ A3</div> <div>1:85,000</div>		<div>Purpose of Issue</div> <div>FINAL</div>	<div>AECOM</div>
		<div>Drawing Number</div> <div>FIGURE 1</div>			<div>Rev</div> <div>02</div>	