

**WEST CHILTINGTON  
NEIGHBOURHOOD PLAN**

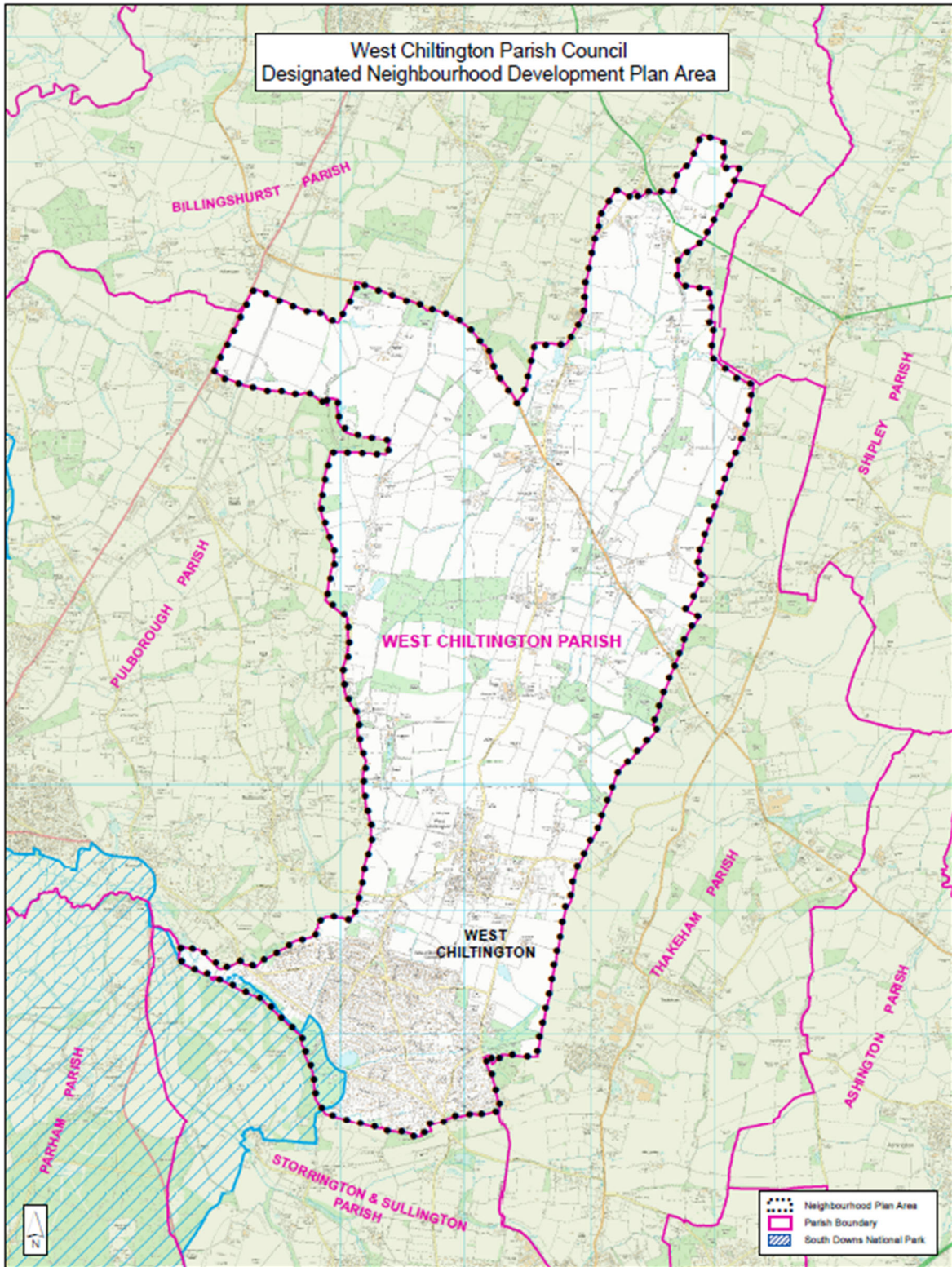
**REFERENDUM**

**INFORMATION STATEMENT  
Referendum: 11 June 2026**

A neighbourhood planning referendum relating to the adoption of the 'West Chiltington Neighbourhood Plan' on **11 June 2026**. The question to be put to voters is as follows:

**'Do you want Horsham District Council and South Downs National Park Authority to use the neighbourhood plan for West Chiltington Parish to help it decide planning applications in the neighbourhood area?'**

The Referendum area is identified on Plan A, which is the same as the designated Neighbourhood Plan area.



**Horsham District Council**  
 Park North, North Street, Horsham,  
 West Sussex. RH12 1RL  
 Rod Brown : Head of Planning & Environmental Services

Reproduced by permission of Ordnance Survey map on behalf of HMSO. © Crown copyright and database rights (2014). Ordnance Survey Licence:100023865

Confirmed by Horsham District Council and to the South Downs National Park Authority under The Neighbourhood Planning (General) Regulations 2012 Regulation 5.

Reference No : WCNP2	Date : 23/01/14	Scale : 1:28,000
Drawing No :	Drawn :	Checked :
		Revisions :

Plan A: West Chilmington Neighbourhood Plan Area

An elector is entitled to vote in the referendum on the **11 June 2026** if the following is true:

- The elector is entitled to vote in a local government election in the referendum area; and
- The elector's qualifying address for the referendum is in the referendum area. A person's qualifying address is in relation to a person registered in the register of electors, the address in respect of which he or she is entitled to be registered.

The referendum expenses limit that will apply in relation to the referendum is £2538.76. The number of persons entitles to vote in the referendum by reference to which the limit has been calculated is 2996.

The referendum will be conducted in accordance with procedures which are similar to those used at local government elections.

### **Viewing the Documents**

The specified documents are:

- West Chiltington Neighbourhood Development Plan.
- Report of the Independent Examiner.
- Summary of the representations
- Decision statement (A statement by the local planning authority that the Submission plan meets the basic conditions).
- Statement that sets out general information on Neighbourhood Planning and the Referendum (Information Statement)

Online copies of the Plan and associated documents can be found by clicking on the following link:

<https://www.horsham.gov.uk/planning/neighbourhood-planning/west-chiltington>

If you have difficulties in viewing to the Plan and associated documentations online please in the first instance contact the relevant parish council office to arrange an appointment to view the documents. Alternatively, you can email the District Council via address below:

[neighbourhood.planning@horsham.gov.uk](mailto:neighbourhood.planning@horsham.gov.uk)

or call the following number **01403 215398** at the earliest possible

opportunity so that we can take this into account. Each enquiry will be reviewed on a case by case basis. Hard Copies of the documents can be viewed at the following locations by **appointment only** at the following locations:

- **West Chiltington Parish Council Offices**  
Parish Office  
Church Street  
West Chiltington  
RH20 2JW  
01798 817434  
[planning@wcpc.org.uk](mailto:planning@wcpc.org.uk)

The Parish Office is open from 10am to 1pm on Tuesdays and Wednesdays.

- **Horsham District Council**, Albery House, Springfield Road, Horsham, West Sussex RH12 2GB between 9.00am to 4.00pm Monday to Friday (by prior appointment – please call 01403 215100 and ask to speak to the neighbourhood planning officer or email to arrange an appointment to view the documents by sending an email to:  
  
[neighbourhood.planning@horsham.gov.uk](mailto:neighbourhood.planning@horsham.gov.uk)

Prepared by Horsham District Council  
Published: 30 April 2026

## Referendum Notes:

On **11 June 2026**, there will be a referendum on a Neighbourhood Plan for West Chiltington Parish. The following note explains more about the referendum that is going to take place and how you can take part in it. In this booklet you can find out about:

- The referendum and how you can take part,
- The neighbourhood area,
- The neighbourhood plan,
- The development plan [of which neighbourhood plans are part]

## Referendum on the Neighbourhood Plan

A referendum asks you to vote 'yes' or 'no' to a question. For this referendum you will receive a ballot paper with this question:

**“Do you want Horsham District Council to use the neighbourhood plan for West Chiltington Parish and South Downs National Park Authority to help it decide planning applications in the neighbourhood area?”**

## How do I vote in the referendum?

You vote by putting a cross (X) in the 'Yes' or 'No' box on your ballot paper. Put a cross in only **one** box or your vote will not be counted.

If more people vote 'yes' than 'no' in this referendum, then Horsham District Council will use the Neighbourhood Plan to help it decide planning applications in West Chiltington Parish.

If more people vote 'no' than 'yes', then planning applications will be decided without using the Neighbourhood Plan as part of the Development Plan for the local area.

## What is Neighbourhood Planning?

Neighbourhood planning aims to help local communities play a direct role in planning the areas in which they live and work. A community can prepare a neighbourhood plan. This plan can show how the community wants land to be used and developed in its area.

## What is a neighbourhood area?

A neighbourhood area can cover single streets or large urban or rural areas. The boundaries of a neighbourhood area are put forward by:

- Town or parish councils
- A neighbourhood forum (a group of at least 21 people in areas without town or parish councils)

## **Who can prepare a Neighbourhood Plan?**

Neighbourhood plans are prepared by town or parish councils, or neighbourhood forums. In this case, the West Chiltington Neighbourhood Plan was prepared by West Chiltington Parish Council.

## **What is a Development Plan?**

In England, planning applications are determined by local planning authorities in accordance with the Development Plan. A Development Plan is a set of documents that set out the policies for the development and use of land across the entire local planning area. Within the Horsham District, the local planning authority is Horsham District Council. Within the Horsham District and inside the South Downs National Park, the local planning authority is the South Downs National Park Authority.

## **Can I vote?**

An elector is entitled to vote in the referendum on the **11 June 2026** if the following is true:

- The elector is entitled to vote in a local government election in the referendum area; and
- The elector's qualifying address for the referendum is in the referendum area. A person's qualifying address is in relation to a person registered in the register of electors, the address in respect of which he or she is entitled to be registered.

You must be registered to vote by midnight on 26 May 2026 to vote in the referendum. You can check if you are registered to vote by calling our Helpline on 01403 215126. The referendum will be conducted based on procedures which are similar to those used at local government elections.

## **Ways of voting:**

There are three ways of voting:

### **In person on 11 June 2026:**

- At your local polling station. You will receive a poll card confirming your polling station for this referendum. In West Chiltington the polling station is:

## **West Chiltington Village Hall, Mill Road, West Chiltington, RH20 2PZ**

- Polling stations are open from 7am to 10pm

If you do not receive your poll card, you can contact our Helpline on 01403 215126 or email us at: [elections@horsham.gov.uk](mailto:elections@horsham.gov.uk).

Please note that you will need an accepted form of voter ID to be able to vote in this referendum. More information will be contained on your poll card, or on our website at [www.gov.uk/upcoming-elections](http://www.gov.uk/upcoming-elections).

### **By post:**

- If you have a postal vote already, you will receive a poll card confirming this.
- To vote by post, you will need to complete an application form and send it to the Electoral Registration Officer to arrive by 5pm on 27 May 2026 at this address:

Elections Team  
Horsham District Council  
Albery House  
Springfield Road  
Horsham  
RH12 2GB

- You can apply for a postal vote online at [www.gov.uk/apply-postal-vote](http://www.gov.uk/apply-postal-vote)
- Postal votes can be sent overseas but you need to think about whether you will have time to receive and return your completed postal vote by 11 June 2026.
- You should receive your postal vote about a week before polling day. If it doesn't arrive in time, you can ask for a replacement up to 5pm on 11 June 2026 by contacting our Helpline on 01403 215126.

### **By proxy:**

- If you have a proxy vote already, you will receive a poll card confirming this
- If you can't get to the polling station and don't wish to vote by post, you may be able to vote by proxy. This means allowing somebody that you trust to vote on your behalf
- To vote by proxy, you will need to complete an application form and send it to the Electoral Registration Officer to arrive by 5pm on 3 June 2026 at this address:

Horsham District Council

Albery House  
Springfield Road  
Horsham  
RH12 2GB

- You can apply for a proxy vote online at [www.gov.uk/apply-proxy-vote](http://www.gov.uk/apply-proxy-vote)
- When you apply for a proxy vote, you must say why you cannot vote in person
- Anyone can be your proxy as long as they are eligible to vote and are willing to vote on your behalf. You will have to tell them how you want to vote.
- Your proxy will need an accepted form of voter ID to be able to vote in this referendum. More information will be contained on the poll card, or on our website at [www.gov.uk/upcoming-elections](http://www.gov.uk/upcoming-elections).

Postal and proxy vote application forms are available on our website at: [www.horsham.gov.uk/electionspages/elections/voting](http://www.horsham.gov.uk/electionspages/elections/voting) If you cannot download a form please email us at: [elections@horsham.gov.uk](mailto:elections@horsham.gov.uk) or call us on: 01403 215126.

### **Am I registered to vote?**

If you're not registered, you won't be able to vote. You can check if you are registered by emailing us at: [elections@horsham.gov.uk](mailto:elections@horsham.gov.uk) or calling us on: 01403 215126

If you are not registered to vote, you will need to complete your registration application by midnight on 26 May 2026. You can register online at [www.gov.uk/register-to-vote](http://www.gov.uk/register-to-vote) with your national insurance number. If you do not have access to the internet, please call 01403 215126 or complete a registration form and send it to the Electoral Registration Officer to arrive by 5pm on 26 May 2026 at this address:

Horsham District Council  
Albery House  
Springfield Road  
Horsham  
RH12 2GB

### **How to find out more:**

- Further general information on neighbourhood planning is available at: [www.horsham.gov.uk/planning/neighbourhood-planning](http://www.horsham.gov.uk/planning/neighbourhood-planning)
- For queries about planning issues and Neighbourhood Planning in general, please contact planning on: 01403 215398

- For more information about voting and the arrangements for this referendum, please call 01403 215126 or email: [elections@horsham.gov.uk](mailto:elections@horsham.gov.uk)