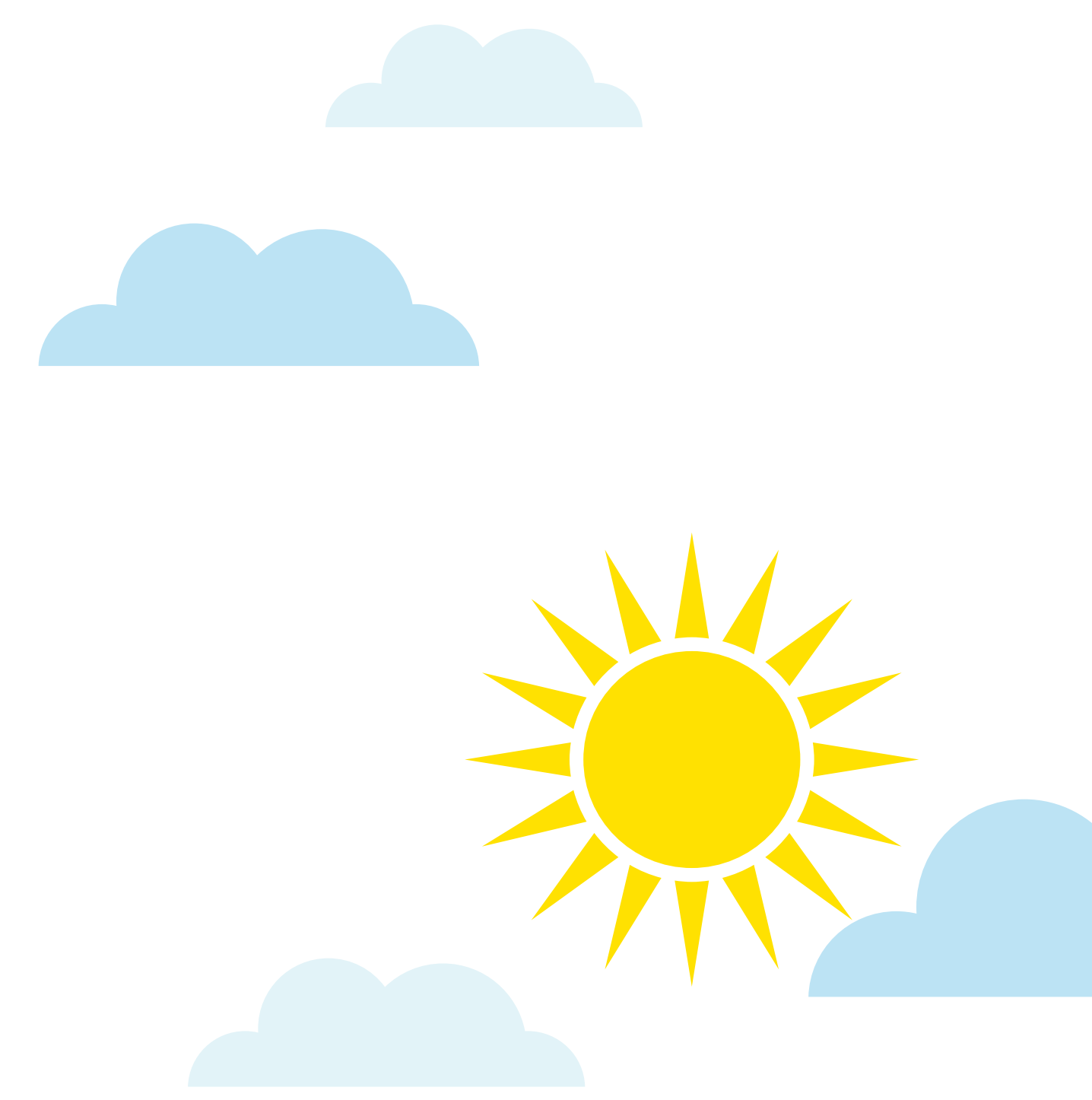


# Local Plan Consultation



The consultation period is  
**17 February to 30 March 2020.**

The Local Plan is in draft form and  
no decisions have been made.

Your views are important in shaping the next stages  
of the plan preparation process.

---

## Submitting comments

The document and more information about  
how to comment can be found online at  
[www.horsham.gov.uk/localplanreview](http://www.horsham.gov.uk/localplanreview)

You can read a hard copy of the draft Local Plan at the  
Council offices, Parkside, Chart Way, Horsham, RH12 1RL  
(between 9am and 5pm on weekdays) and in all district  
libraries during normal opening hours.

We strongly encourage all to register online to submit  
comments. By registering with us, we will also be able  
to keep you updated with progress of the Local Plan.

\*Anonymous representations will not be accepted and no inappropriate,  
derogatory or discriminatory comments should be made regarding an  
individual or a collective group of individuals. Any comments made  
of this nature will be disregarded.



Find out more and have your say by registering online at:

[www.horsham.gov.uk/localplanreview](http://www.horsham.gov.uk/localplanreview)

Email: [strategic.planning@horsham.gov.uk](mailto:strategic.planning@horsham.gov.uk)

Telephone: 01403 215100