



Horsham
District
Council



Horsham District Council Infrastructure Delivery Plan (IDP)

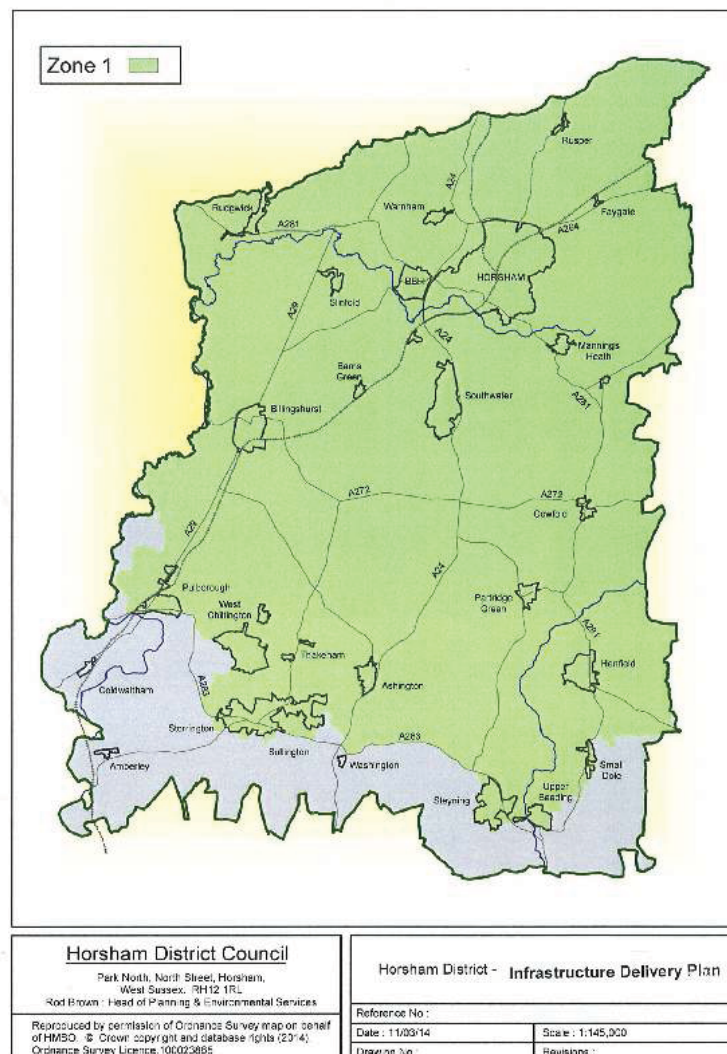
Contents

| | | |
|---------|--|------------|
| 1.0 | Introduction | p3 |
| 2.0 | National Guidance | p4 |
| 3.0 | Horsham District Planning Framework..... | p5 |
| 4.0 | Future growth across the District..... | p5 |
| 5.0 | Background to the Infrastructure Delivery Plan..... | p6 |
| 6.0 | Process of preparing the Infrastructure Delivery Plan..... | p6 |
| 7.0 | How will infrastructure be delivered..... | p7 |
| 8.0 | Evidence base documents..... | p7 |
| 9.0 | Summary of infrastructure Costs..... | p8 |
| 10.0 | Baseline Infrastructure Provision..... | p9 |
| 10.1 | Transport..... | p9 |
| 10.1.1 | Highways..... | p9 |
| 10.1.2 | Railways..... | p11 |
| 10.1.3 | Cycling / Pedestrians..... | p13 |
| 10.1.4 | Buses..... | p15 |
| 10.2 | Education | p15 |
| 10.3 | Health | p18 |
| 10.3.1 | GPs and Hospitals | p18 |
| 10.3.2 | Ambulance Service..... | p19 |
| 10.4 | Sport and Recreation | p20 |
| 10.4.1 | Allotments | p20 |
| 10.4.2 | Tennis and Multi-Courts | p20 |
| 10.4.3 | Bowling Greens | p21 |
| 10.4.4 | Built Facilities | p21 |
| 10.4.5 | Village and Community Halls | p23 |
| 10.4.6 | Play Provision | p24 |
| 10.4.7 | Multi-Functional Greenspace | p25 |
| 10.4.8 | Sports Pitches | p25 |
| 10.4.9 | Youth Areas..... | p26 |
| 10.4.10 | Library | p27 |
| 10.5 | Public Services | p27 |
| 10.5.1 | Fire and Rescue | p27 |
| 10.6 | Utilities | p27 |
| 10.6.1 | District Energy Networks | p28 |
| 10.6.2 | Gas | p29 |
| 10.6.3 | Electricity | p29 |
| 10.6.4 | Water Supply, Wastewater Treatment and Sewerage .. | p30 |
| 10.6.5 | Waste and Recycling | p31 |
| | Appendix A - Infrastructure List | p33 |

1.0 Introduction

- 1.1 The provision of new homes and the infrastructure required to support them is critical in meeting the economic challenges of delivering sustainable communities.
- 1.2 The Infrastructure Delivery Plan (IDP) sets out what infrastructure is required to support new growth across the Horsham District. It should however be noted that it does not include areas of the South Downs National Park located towards the south of the district. The National Park Authority is a local planning authority in its own right, although at present it has a delegation agreement with Horsham District Council to determine planning applications in the parts of Horsham that lie within the Park. Nevertheless the Council will ensure joint working where cross boundary infrastructure issues occur. The South Downs National park is currently preparing their Infrastructure Delivery Plan.

The map below shows the area (Zone 1) covered by the Infrastructure Delivery Plan:



2.0 National Guidance

- 2.1 As a local planning authority, Horsham District Council has to plan positively to ensure that development and infrastructure needs are met. To ensure that new development is delivered sustainably, the infrastructure, facilities, and service needs of existing and new residents and businesses must be properly planned for.
- 2.2 The National Planning Policy Framework (NPPF) states that (para 157) “Crucially, Local Plans should plan positively for the development and infrastructure required in the area to meet the objectives, principles and policies of this Framework” and (para 162) Local planning authorities should work with other authorities and providers to “assess the quality and capacity of infrastructure for transport, water supply, wastewater and its treatment, energy (including heat), telecommunications, utilities, waste, health, social care, education, flood risk and coastal change management, and its ability to meet forecast demands” and (para. 177) “important to ensure that there is a reasonable prospect that planned infrastructure is deliverable in a timely fashion”.
- 2.3 Paragraph 173 of the NPPF highlights the need to pay “careful attention to viability and costs in plan-making and decision-taking” and emphasises that “Plans should be deliverable”. This means that the scale of development and specific sites proposed for development should not be subject to obligations and policy requirements such as requirements for affordable housing, standards, infrastructure contributions, that compromise their viability or deliverability or that prevent landowners and developers to achieve a competitive return.
- 2.4 This Infrastructure Delivery Plan aims to:
- Identify the District’s infrastructure needs for the Horsham District Planning Framework period up to 2031;
 - Set out the costs, funding sources and delivery mechanisms associated with these infrastructure needs;
 - Improve lines of communication between key delivery agencies and the local planning authority, including identifying opportunities for integrated and more efficient service delivery and better use of assets;
 - Provide evidence for the setting of a Community Infrastructure Levy (CIL) –
 - Inform the types of infrastructure to appear on the Regulation 123 List;
 - Provide a ‘live’ document that can be used as a tool for helping to deliver infrastructure and which can be regularly updated to reflect changing circumstances and needs and;

Definition of Infrastructure –

‘A collective term for services such as roads, electricity, sewerage, water, education and health facilities’

For the purpose of this document the definition of key infrastructure categories, and the elements within each group is set out in the table below:

| Infrastructure | Specific Elements |
|--------------------------------------|--|
| Transport | <ul style="list-style-type: none"> • Road • Bus • Rail networks • Cycling and walking infrastructure |
| Education | <ul style="list-style-type: none"> • Further and higher education • Secondary and primary education |
| Health | <ul style="list-style-type: none"> • Acute Care and General Hospitals • Mental health hospitals • Health centres/ Primary Care Trust |
| Social Infrastructure | <ul style="list-style-type: none"> • Supported accommodation • Social and community facilities • Sports centres and other recreation facilities • Play space |
| Green Infrastructure | <ul style="list-style-type: none"> • Flood defence • Open spaces and parks |
| Public and Community Services | <ul style="list-style-type: none"> • Emergency services (ambulance, fire and rescue, and police) |
| Utility | <ul style="list-style-type: none"> • Electricity, gas and water supply • Wastewater treatment • Telecommunications infrastructure |

Table 1: Categories of Infrastructure

3.0 The Horsham District Planning Framework

3.1 The Horsham District Planning Framework (HDFP) highlights the need for infrastructure as part of the 'vision' for the district:

“There is significant investment in the leisure offer and community facilities to support and provide choice for all, thereby sustaining the high quality of life and vibrant communities, making Horsham District a destination of choice and promoting health and wellbeing”

3.2 The policies contained within the Plan emphasise the need for infrastructure to support new development and seek to ensure that proposals for new development can be accommodated either within the capacity of existing infrastructure or through infrastructure improvements.

4.0 Future Growth across the District.

6.1 The IDP seeks to assess infrastructure requirements at both a district wide scale as well as on a spatial basis. To enable the assessment of future infrastructure required to support growth, it is necessary to identify the likely growth that will occur and its spatial distribution.

6.2 The population of the District will rise over the next 20 years. This will also lead to an increase in demand for housing and the associated infrastructure to support new growth. The Horsham District Planning Framework has identified a requirement for 13,000 new homes over the plan period. This is

proposed to be spread across two strategic sites at Land North of Horsham and Land East of Southwater, as well as Neighbourhood Planning.

Land North of Horsham

The HDPF proposes to allocate 2500 homes on a strategic site on land North of Horsham.

Land West of Southwater

The HDPF proposes to allocate 500 homes on a strategic site on land West of Southwater.

Neighbourhood Planning

Currently 15 Parishes across the district are progressing Neighbourhood Development Plans.

5.0 Background to the Infrastructure Delivery Plan

- 5.1 The IDP provides a update to the Horsham District Infrastructure Study (May 2010). This study was intended to provide an evidence base on infrastructure requirements to assist HDC in making decisions on the deliverability of growth in the district to 2026 and beyond. Since this was prepared the Council has progressed the preparation of the Horsham District Planning Framework, specifically the identification of the required housing target and the location of two strategic development sites. Therefore the key issues and priorities within the 2010 assessment have needed to be updated.
- 5.2 The IDP provides a current assessment of the infrastructure requirements, identified funding and delivery mechanisms, and serves as evidence to justify the Council's Community Infrastructure Levy (CIL), which will be introduced in 2015. It also identifies appropriate infrastructure to support the existing and planned levels of housing and employment development across the District over the next 20 years.

6.0 Process of preparing the infrastructure Delivery Plan

- 6.1 The IDP has been prepared by Horsham District Council in partnership with other government bodies and relevant agencies.

Process:

- 1) Review of existing plans and projects – where possible information was taken from current plans and projects.
- 2) Information gathered from partners – letters were sent to all infrastructure providers asking what their requirements would be as a result of new planned development.
- 3) Prepare an infrastructure schedule setting out what infrastructure will be required to support new growth.

6.2 It is recognised that the requirement for infrastructure schemes may vary over the plan period, therefore an update of the schemes that are identified over time will take place as required.

6.3 This IDP provides a baseline position of the infrastructure requirements across the District. Horsham District Council will continue to work closely with relevant partners and infrastructure providers throughout the plan period to ensure the IDP is reviewed and updated to reflect progress on infrastructure delivery as well as changing needs, circumstances and priorities. Throughout this process, the IDP will aid the Council and relevant partners to prioritise spending on infrastructure and address funding gaps.

7.0 How will Infrastructure be delivered

7.1 Some elements such as the delivery of on site utility infrastructure will be an integral part of all new development. In most cases the costs of providing on site utilities and connection to existing networks will be borne by the developer. Outside of the site itself, if sufficient infrastructure capacity does not already exist to meet the need created by new residents or users of a development, the developer may need to make a financial contribution towards provision or enhancement elsewhere.

7.2 Where relevant, the IDP indicates how the infrastructure will be provided whether this is to be by the developer, the infrastructure provider or through S106 or CIL contributions. The District Council will take into account the IDP work for the Local Plan in developing the CIL charging schedule.

7.3 The Community Infrastructure Levy (CIL) is not expected to fully plug the infrastructure funding gap and is considered as only one source of funding for delivering infrastructure. Therefore other sources of funding such as the New Homes bonus could be used on delivering community projects and S106 monies may be used to deliver on site infrastructure or off site if cannot be delivered on site. Nevertheless it is important that the charging authority ensures that there is no overlap in the use of CIL and S106 contributions so as to avoid 'double dipping' which would mean the developer is paying twice.

7.4 The provision for affordable housing will still be agreed through a S106 agreement.

8.0 Evidence base documents

8.1 All infrastructure schemes set out in appendix A have been based on appropriate evidence. A table of all evidence base documents used is set out below.

| Evidence Base Document |
|---|
| Draft Water Resources Management Plan 2015 - 2040 |
| Cumulative Transport Assessment (2014) |
| Carbon Trust |
| Horsham Cycling Review (2009) |
| Horsham District Community Partnership Transport Plan |
| Horsham District Council – Green Space Strategy |
| Horsham District Council – Play Strategy |
| Manual for Streets (2007) |

| |
|--|
| Network Rail Strategic Business Plan (2013) |
| Network Rail London and South East Market Study (2013) |
| Network Rail and South East Route Utilisation Strategy (2013) |
| Network Rail Strategic Business Plan (2014 – 2019) |
| Network Rail Sussex Route Plan – Summary Route Plan |
| National Stations Improvement Programme |
| PPG 17 Assessment |
| South East Coast Ambulance Annual Report 2012/2013 |
| Southern Gas Plan 2011 |
| Southern Gas Networks Capacity Investment Plan |
| Southern Water Asset Management Plan 5 (2010 – 2015) |
| The Strategic Commission Plan 2010 – 2014 |
| The Horsham District Sport, Open Space and Recreation Assessment (2014) |
| UK Power Networks Business Plan 2015 – 2023 |
| UK Power Networks - Long Term development Statement |
| Water Cycle Study 2013 |
| West Sussex County Council Minerals and Waste Plan 2013 |
| West Sussex County Council: Planning School Places 2013 |
| West Sussex County Council – Minerals and Waste Annual Monitoring Report 2012/2013 |
| West Sussex County Council Local Transport Plan 2011 – 2026 |
| West Sussex County Council Fire and Rescue Service Plan 2010 – 2015 |
| West Sussex County Council – Draft Rights of Way Improvement Plan (Feb 2014) |

9.0 Summary of Infrastructure Costs

- 9.1 The table set out in appendix 1 identifies what infrastructure is required to support new development and how this is likely to be funded (CIL, S106, other funding sources). The table identifies that the draft total cost of infrastructure that is proposed to be funded by CIL shows that there is a significant 'funding gap'. The infrastructure that is required to be funded through CIL amounts to £37,333,171. The projected income from the CIL is £27,038,150, therefore the total 'funding gap' is £10,295,021.
- 9.2 The infrastructure list in appendix 1 identifies what schemes will be required to deliver future growth as set out in the Horsham District Planning Framework and includes the following information:
- **Infrastructure Type**
The infrastructure schemes have been grouped into seven categories to capture all types of infrastructure.
 - **Scheme**
This sets out what infrastructure is proposed and where.
 - **Phasing / Priority for Delivery**
This has been shown where the evidence base documents or discussions with infrastructure providers have identified when schemes are likely to come forward for development.
 - **Estimates Costs**

The table summaries what the estimated costs are likely to be and is based on what has been available in the evidence base and discussions with key stakeholders and infrastructure providers. This also provides information on the schemes which are likely to be eligible for CIL funding or delivered based on other types of funding.

- **Evidence Base**
This provides a note of which evidence base documents the infrastructure requirement has been identified (*see chapter 8*)
- **Delivery Responsibility**
This identifies which organisation is responsible for the delivery of each infrastructure scheme.

10.0 Baseline Infrastructure Provision

To establish the future requirements OF infrastructure to support growth, it is necessary to establish what existing infrastructure is currently in place and how 'fit for purpose' it is to serve the existing and future population. This baseline information helps to identify where there are existing growth pressures on infrastructure and what capacity there is to support growth across the District.

The following baseline information sets out the existing infrastructure that is located across the district: -

10.1 Transport

10.1.1 Highways

Current Provision

The District has a number of strategic roads and a network of local roads. The road network in the District is generally good, with the A24 as the main north-south route and the A272 the main east-west link. The A264 connects Horsham to Crawley and onwards to the A23/M23 and the wider motorway network.

Evidence

- Horsham District Transport and Development Study (2014)
- West Sussex County Council Transport Plan 2011 – 2026 (LTP3)
- Chichester and Horsham Travel Survey (October 2013)

Summary, Future Need and Funding

The West Sussex County Council (WSSCC) Local Transport Plan 2011 – 2016 (LTP3) has identified that the A24 causes severance as it bisects the District linking London to the south coast. A lack of safe crossing points discourages people from accessing neighbouring communities and enjoying the public rights of way network. Congestion on roads that have to cross or feed into the A24 is often experienced during the peak periods of the day.

The A264, A29, A281, A272, A283, and the A2037 all pass through the District. All of them suffer from congestion during peak periods, particularly on the A264 between Horsham and Crawley and at junctions on, and roads adjoining the A24.

The WSCC implementation plan aims to tackle the identified transport issues, as set out below, as and when funding becomes available. All new schemes and developments should contribute and support in some way to the following: -

- Increasing use of sustainable modes of transport
- Improving network efficiency in order to improve journey time and air quality
- Developing and implementing measures which will reduce traffic emissions in the Air Quality Management Area
- Improving safety for all road users
- Improving accessibility between communities within the District.

The key aim in the Plan for Horsham District with regards to highways is set out below:

- Maintaining roads and public rights of way to a good standard.
- Improving the safety record on the A24 through delivery of improvements which tackles the identified issues effectively.
- Improving street lighting through the contract with Southern Electric.
- Ensuring that the maximum transport benefits are secured from the major strategic housing developments and other developments within the District, so that they fully integrate with existing communities and mitigate any impacts. This includes delivery of a new grade separated junction with the A24 and east- west link road to access the West of Horsham development.
- Making the best use of the existing road network and improving the way in which the network is managed to reduce current levels of congestion, for example through the use and introduction of intelligent transport systems and improving public transport.
- Encouraging HGVs to use the advisory lorry route network while maintaining access to areas which businesses need to access.
- Working with the local community and interest groups to identify priorities and encourage sustainable travel by improving the cycle and pedestrian network. This may include: new or improved cycle and pedestrian routes; signing; changes to speed limits; cycle parking; repairing and maintaining surfaces.
- Promoting sustainable transport choices through projects such as safer routes to school.
- Introducing measures to reduce the speed of traffic within residential and built-up areas where there are clear benefits from doing so and this is supported by the local community.
- Seeking to reduce traffic congestion by providing a convenient, comfortable, safe and flexible public transport system that offers a real alternative to the private car and encourages sustainable movement, thereby reducing energy consumption and pollution.

The Horsham District Transport and Development Study 2014 assessed the impact of forecast strategic development on the transport network and proposed appropriate mitigation measures. The aim of the study was to:

- Inform the consideration of strategic development options for the Horsham District Planning Framework;
- Identify the impact of development options on existing transport infrastructure and public transport services, proposes appropriate mitigation measures, taking into account existing plans and proposals – established or emerging – from the local strategic highway and planning authorities, alongside new suggestions from the study team;
- Provide preliminary estimates of the costs of provision and maintenance of any new infrastructure required; inform consideration of the sustainable transport options and assumptions to be incorporated into the HDPF evidence base and infrastructure planning that will inform the development of the Community Infrastructure Levy; and
- Address the requirements of both West Sussex County Council as Highway Authority and the Highways Agency, both of which aim for a sustainable approach to transport with a common objective of managing travel demand to minimise congestion, delays and adverse environmental/safety impacts.

The outcome of the Horsham District Transport and Development Study identified that the existing road network could not accommodate the proposed level of new development as set out in the Horsham District Planning Framework because some of the existing junctions were operating close to capacity, specifically the A264/B2195 Moorehead and A24/B2237 Robin Hood Roundabout.

The mitigation measures set out in the study concluded the following:

- Great Daux roundabout – Signalisation of all approaches
- Moorhead roundabout – Widening of B2195 Crawley Road approach
- Robin Hood roundabout – Widening of A24 approaches
- Hop Oast roundabout – Widening of A24 approaches
- North Horsham Strategic Development Location – Smarter choices schemes
- Southwater Strategic Development Location – Improved sustainable modes of transport.

The infrastructure schemes set out in *Appendix 1* will all help to contribute towards addressing the issues set out above.

Funding for the identified schemes will be met through both the Community Infrastructure Levy and S106 contributions.

10.1.2 Railway

Current Provision

Network Rails Sussex route is one of the main commuter routes in the south of England, carrying approximately 51,000 people each morning peak into the Central London employment zone. One of their key commuter areas is at

Horsham. In total passenger growth has been 40 per cent in the last 10 years and is forecast to grow by a further 30 per cent in the next 10 years.

One of the main lines servicing the district is the Arun Valley line. This provides a direct link from the West Coastway towns of Chichester, Littlehampton and Bognor Regis to London Victoria and London Bridge via Horsham. The line diverges from the West Coastway at Arundel and serves a number of small to medium sized towns between there and Horsham. From Horsham two routes into London are available, Arun Valley services taking the Sussex Route via Crawley and Three Bridges or via Leatherhead. This line provides an important long distance commuter railway, as well as attracting leisure and diversionary traffic. This is operated by Southern Trains.

There are currently eight railway stations located across the district:

- Horsham
- Littlehaven
- Warnham
- Faygate
- Christ Hospital
- Billingshurst
- Pulborough
- Amberly

The train operators that currently provide a service to the stations located across the district are Southern Rail and First Capital Connect.

Evidence

- Network Rail Strategic Business Plan (January 2013)
- Network Rail London and South East Market Study (2013)
- Network Rail London and South East Route Utilisation Strategy (2011)
- Network Rail Strategic Business Plan (2014 – 2019)
- Network Rail Sussex Route Plan – Summary Route Plan
- National Stations Improvement Programme.
- West Sussex County Council Local Transport Plan 2011-2026 (LEP3)

Summary and Future Need and Funding

There are good railway connections across the Horsham District, specifically in the north.

The railways authorities have recently undergone improvements to the railway stations at Horsham, Littlehaven, Christ Hospital and Billingshurst.

Horsham Station was refurbished in 2012 which was delivered through collaboration between the Department for Transport's National Station Improvement Programme, Network Rail and West Sussex County Council. These improvements included an improved ticket office, better access to the platforms, reconfiguration of parking at the front of the station and cycle parking. The majority of these improvements were funded by Network Rail.

Improvements to Littlehaven Train station 2013/2014 included lengthening of the station platform, replacing the barriers and providing additional and better cycle parking facilities.

Some minor improvements have been made at Billingshurst Station which included removing a Grade II Listed signal box.

The WSCC Local Transport Plan has identified key areas which need improving to ensure a good delivery of transport rail services. These issues are:

- Working with Network Rail and rail operators to investigate ways to minimise issues caused by level crossings across the District.
- Working with partners to improve the transport interchange at Horsham railway station, as well as exploring further opportunities for improvement through the Southern station travel plan project.
- Working with rail partners, including Sussex CRP, to explore opportunities to improve other stations throughout the District and promote rail travel. This includes improvements to access, parking and integration with other modes of transport.

In terms of future requirements the developers promoting the Land North of Horsham site are currently working with the railway authorities in assessing the viability of a new station and the impact this would have on the existing network.

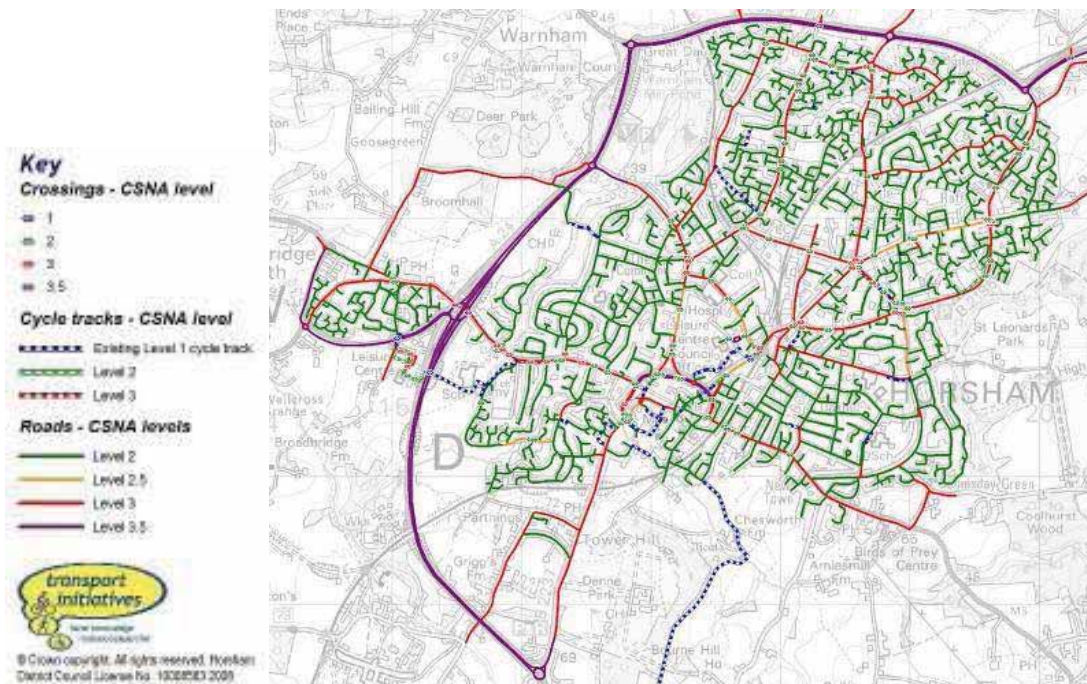
Should a new station form part of the development at Land North of Horsham, this could include a substantial amount of parking and could improve access for residents and employers at the new development. It could also give greater access to the railway network from a wider area around Horsham. The current proposal for the new station is for a modern station with a 12 carriage capacity.

10.1.3 Cycling / Pedestrian

Current Provision

The increased emphasis on sustainable transport is important across the District, especially in an area which has such a high level of car ownership. There are a number of cycle routes both within the built up area and off road within the District. The largest provision for cyclists is located within the built up area of Horsham Town and Broadbridge Heath.

A map of the routes and crossing through Horsham and Broadbridge Heath are set out below:



Evidence

- Horsham Cycling Review (2009)
- Manual for Street (2007)
- West Sussex Local Transport plan 2006 – 2016
- Horsham District Community Partnership Transport Plan
- West Sussex County Council - Draft Rights of Way Improvement Plan (Feb 2014)

Summary, Future Need and Funding

The Horsham Cycling Review assessed the level of cycling provision and cycling routes across the district, but primarily within the Horsham urban areas. It concluded that improvements and upgrades are required to existing routes, the need for new routes and linkages have been identified as well as better crossing facilities and access to the cycling network.

The WSCC Transport Plan 2011-2026 has identified the provision of improving the cycling network as a priority. It has also been identified that there is a need for:

- Working with the local community and interest groups to identify priorities and encourage sustainable travel by improving the cycle and pedestrian network. This may include: new or improved cycle and pedestrian routes; signing; changes to speed limits; cycle parking; repairing and maintaining surfaces.

The review provided recommendations for cycling priority routes as well as other infrastructure improvements related to cycling.

Funding for a number of the schemes identified in the Horsham Cycling Review is likely to be funded by the CIL.

10.1.4 Buses

Current Provision

The District is fairly well serviced with buses across the District, however the villages and rural areas are not so well served. Buses across the District are served by Arriva, Compass Travel, Metrobus and Stagecoach.

Public Transport is important to improving sustainable transport within the District and therefore it is important to ensure that new development is serviced by suitable bus routes. This is particularly relevant in rural locations.

Evidence

- WSCC Local Transport Plan 2011 – 2026 (LTP3)

Summary, Future Need and Funding

The WSCC Transport Plan 2011 – 2026 has identified key areas of improvement in providing bus travel across the district. This is:

- Continuing to work with our bus operators to improve; the capacity and quality of the bus fleet; access to services; and the way that services are marketed.

It has also been identified that a number of settlements across the district require 'real time bus display boards', located at bus stops. There is also a deficiency in rural bus services which needs to be improved to enable more sustainable travel choices.

Improvements to bus services will be provided through both through S106 contributions, specifically on larger scale sites and CIL contributions on smaller schemes.

10.2 Education

Current Provision

WSCC has a statutory duty to provide education for all children of school age, normally 4 to 16 years and ensure there are sufficient appropriate school places available. It discharges this duty in partnership with diocesan authorities and other providers. In deciding the need for places it considers the capacities of existing schools and the forecast number on roll within a locality.

In West Sussex, primary education generally includes children from 4 to 11 years of age (7 year groups) and secondary education is provided for children from 11 to 16 (5 year groups) or 11 to 18 years.

There are currently 44 primary schools within the Horsham District.

There are currently 6 secondary schools located across the district at Rydon Community College (Pulborough), Steyning Grammar School (Steyning), Tanbridge House School (Horsham), The Forest School (Horsham), The Weald (Billingshurst) and Millais School (Horsham).

There are two colleges within the District at College of Richard Collyer (Horsham), Brinsbury College (Pulborough), which is an agricultural college, as well as The Weald and Steyning Grammar School which provide education up to 18 years.

There is one special education needs school at Queen Elizabeth II Silver Jubilee School, Horsham.

Table A: Summary of Maintained Schools (including Academies and Free Schools) & Number of Pupils on Roll (NOR) – As at October 2012

| Type of School | No of Schools | No of School Places available (PANs) | N.O.R | Net Capacity | Surplus/ Deficit of Net Capacity | Percentage Surplus/ Deficit |
|--|---------------|--------------------------------------|-------|--------------|----------------------------------|-----------------------------|
| Nursery | | | | | | |
| Primary | 43 | 1744 | 9185 | 10168 | 983 | 9.67% |
| Secondary | 6 | 1414 | 7758 | 7931 | 173 | 2.18% |
| Alternative Provision / Links Colleges | 1 | | 68 | | | |
| Totals | 50 | 3158 | 17011 | 18099 | 1020 | 5.64% |

Table B: Number of Primary Schools & Pupils on Roll as at October 2012

| Type of School | Community | | Voluntary Controlled | | Voluntary Aided C of E | | Voluntary Aided RC | | Foundation / Trust | | Academy / Free School | | Total | |
|----------------|---------------|--------|----------------------|--------|------------------------|--------|--------------------|--------|--------------------|--------|-----------------------|--------|---------------|--------|
| | No. of school | pupils | No. of school | pupils | No. of school | pupils | No. of school | pupils | No. of school | pupils | No. of school | pupils | No. of school | pupils |
| Infant 4 – 7 | 2 | 390 | | | | | | | | | 1 | 269 | 3 | 659 |
| First 4 – 10 | 3 | 543 | 3 | 314 | | | | | | | | | 6 | |
| Primary 4 – 11 | 14 | 3892 | 8 | 1163 | 7 | 1372 | 2 | 333 | | | | | 31 | |
| Junior 7 – 11 | 1 | 159 | | | | | | | | | | 750 | 3 | |
| TOTAL | 20 | 4984 | 11 | 1477 | 7 | 1372 | 2 | 333 | | | | 1019 | 43 | |

Table C: Number of Secondary Schools and Pupils ON Roll as at October 2012

| Type of School | Community | | Voluntary Controlled | | Voluntary Aided C of E | | Voluntary Aided RC | | Foundation / Trust | | Academy / Free School | | Total | |
|----------------------|----------------------|----------------------|----------------------|----------------------|------------------------|----------------------|----------------------|----------------------|----------------------|----------------------|-----------------------|----------------------|----------------------|----------------------|
| | No. of school pupils | No. of school pupils | No. of school pupils | No. of school pupils | No. of school pupils | No. of school pupils | No. of school pupils | No. of school pupils | No. of school pupils | No. of school pupils | No. of school pupils | No. of school pupils | No. of school pupils | No. of school pupils |
| Intermediate 10 – 13 | 1 | 475 | | | | | | | | | | | 1 | 475 |
| Secondary 11 – 16 | 3 | 3804 | | | | | | | | | | | 6 | 3804 |
| Secondary 11-18 | 1 | 1495 | 1 | 1984 | | | | | | | | | 2 | 3479 |
| Total | 5 | 5774 | 1 | 1984 | | | | | | | | | 6 | 7758 |

Table D: Special Schools and Pupils on Roll as at October 2012

| School | Age Range | Gender | No. | Planned Places |
|--|-----------|--------|-----|----------------|
| Queen Elizabeth II Silver Jubilee School | 2-19 | Mixed | 68 | 75 |

Evidence

- Planning School Places 2013

Summary Future Need and Funding

The 'Planning School Places 2013' identifies how WSCC will need to plan to provide for additional pupil places in the future. The schools that have been identified for potential expansion are:

| Initial Proposed Scheme | Type | Additional Places per year group (total places) | Commissioning Position | Target Opening |
|---|------------|---|---|----------------|
| St Mary's, Pulborough | Extension | 15 (105) | Public consultation Jan 2013 | Sept 2013 |
| Heron Way Primary School, Horsham | Extension | 15 (105) | Statutory notice approved | Sept 2013 |
| Wisborough Green, Primary School, Horsham | Extension | 10 (70) | Statutory notices approved for 5 year places per year | Sept 2013 |
| Arunside, Primary School, Horsham | Extension | 30 (210) | Statutory notice approved | Sept 2013 |
| Shelly | Relocation | 30 (210) | Statutory notice | Sept |

| | | | | |
|-----------------------------------|------------------------|---------------------------------|--|------------|
| Primary School, Broadbridge Heath | and expansion | | approved | 2017 |
| Southwater Primary School | Extension | 15 (105) | Yet to be commissioned. Dependent on housing. | Sept 2016+ |
| East of Billingshurst Primary | New School / Extension | 30 (210) | Yet to be commissioned. Dependent on housing. | Sept 2016+ |
| The Weald Secondary School | Extension | 30 or 60 (372 incl. sixth form) | Consultation with schools taking place. Second form of entry dependant of housing. | Sept 2015 |
| Southwater Secondary | New School | tbc | Yet to be commissioned. Current Free School proposal | Sept 2016 |
| North of Horsham Secondary | New School | tbc | Dependent on housing | Sept 2020+ |

Note: The 'Planning School Places 2013' is currently being updated.

As set out increased growth will require additional school places for primary and secondary provision. This is set out in the appendix 1. The IDP has identified the need for additional primary, secondary, early years and a specialist school to support the development on the North Horsham Strategic Site. This requirement will be provided within the strategic site. The strategic site at Land West of Southwater would also generate a requirement to contribute towards primary, secondary and early years education. This would be provided through a contribution to existing facilities rather than development within the site.

West Sussex County Council has also identified that the proposed new development across the district will need some of the existing schools to expand, therefore the schemes in appendix 1 identify the provision for contributions through S106 to pay for these facilities.

10.3 Health

10.3.1 GPs and Hospitals

Current Provision

Healthcare across the District is delivered primarily by the Clinical Commissioning Group (CCG) and NHS England. This is delivered both at the primary level within the existing communities through GP Surgeries and Dentists, and the secondary (acute) care level, through the Horsham Hospital in/out patient facilities.

The CCG is in the process of preparing a Strategic Outline Case (SOC). The purpose of the SOC is to set out proposals across Crawley CCG and Horsham and Mid Sussex CCG for how CCG plans for health and well-being and local services will be implemented. This is an interim of transformational change, infrastructure development and capital and revenue investment. Once the SOC is completed and subject to approval, this will then lead to an Outline Business Case (OBC) and then an Full Business Case. The focus of the SOC is local hospitals (Crawley and Horsham) and community/general practice services and infrastructure. Timescales for the SOC completion is late 2014/early 2015.

Evidence

- Discussions with the CCG

Summary, Future Need and Funding

Future growth across the district is likely to have an impact on NHS capacity and demand particularly locally for primary care services. In terms of funding for the SOC, that is part of the SOC process itself to identify capital and revenue implications and then source funding. It is likely that a S106 contribution will be required to fund the provision of health at Land North of Horsham and larger residential development sites. Therefore funding in whole or part may be required through S106 and CIL contributions.

10.3.2 Ambulance Service

Current Provision

The Ambulance Service is provided by the South East Coast Ambulance Service and forms part of the NHS Foundation Trust. The South Coast Ambulance Service covers the area around Horsham, Crawley, East Grinstead and Horley where there are 53 ambulances, plus other resources such as paramedics in cars.

There is an Ambulance Station located along Hurst Road in the centre of Horsham which provides a base for a critical care team of paramedics. In addition to this there is a Hazardous Area Response team based at Gatwick that serves the district and comprises of front line clinical staff. There are also a number of community responders located throughout the District, specifically in more rural and hard to reach locations.

Evidence

- Discussions with the Ambulance Service and CCG
- South East Coast Ambulance Annual Report 2012/2013

Summary, Future Need and Funding

Discussions with the Ambulance Service have identified that there may be a need in the future for an Ambulance Response Point. This would provide a

stopping place for ambulances and associated facilities, as well as providing a base to ensure that the Ambulance Service can reach critical patients within an 8 minute response time. It is also likely that the increase in population will lead to greater pressure on the Ambulance Service, therefore additional ambulances may be required in the future.

Additional discussions will need to be held with the Ambulance Service about potential locations for a response point. Any new facilities are likely to be funded by the Clinical Commissioning Group (CCG) and through S106 contributions.

10.4 Sport and Recreation

10.4.1 Allotments

Current Provision

There are currently 31 allotment sites across the District which amounts to approximately 27.2 ha of allotment spaces and approximately 1,525 plots. This includes sites primarily owned by the District or Parish Council, but also several privately owned sites.

Evidence

- The Horsham District Sport, Open Space and Recreation Assessment (2014)

Summary, Future Need and Funding

The Open Space and Recreation Assessment identified that there is an occupancy rate of 96%. Even so, there are still waiting lists at the majority of sites across the District, as a whole the total number of people on the waiting list equates 18-19% of the known number of plots. Therefore overall the demand exceeds supply by nearly 20%.

The study concluded that the need to make new houses more affordable is leading to higher densities, especially for starter homes. As a result this will inevitably result in most new dwellings having only small gardens and, as a direct consequence, may generate growth in demand for allotments.

Funding for Allotments is likely to come forward through the CIL or S106 on larger strategic sites and within other settlements where a need has been identified.

10.4.2 Tennis and Multi-Courts

Current Provision

In 2012, there were 115 courts on 32 sites, of which 89 are tennis courts and 26 are multi-courts. The main sites are:

- 15 courts at Christ Hospital
- 7 courts at Compton's Tennis Club, Lower Beeding
- 9 courts at Horsham Cricket Club

- 5 courts at Horsham Park
- 6 courts at Steyning Leisure Centre
- 8 courts at Storrington Leisure Centre

Evidence Base

- The Horsham District Sport, Open Space and Recreation Assessment (2014)

Summary, Future Need and Funding

The study identified that based on the quality standards there is a need for more courts across the District. It also identified that most of the courts across the District appear to be in good condition, especially those owned by private Tennis Clubs and at Horsham Park. It concluded that there may be scope to increase the capacity of the existing courts with the use of floodlights.

Funding for the provision of additional tennis facilities will be through CIL contributions.

10.4.3 Bowling Greens

Current Provision

Horsham District has a total of nine bowling greens that are reasonably distributed across the district in locations. There are three in Horsham, one in Billingshurst, one in Pulborough, one in Storrington, one in Steyning and one on Henfield.

Evidence

- The Horsham District Sport, Open Space and Recreation Assessment (2014)

Summary, Future Need and Funding

The Open Space and Recreation Assessment concluded that there is adequate provision for bowls facilities in the District and this is likely to remain the case for the foreseeable future as the existing clubs are likely to have spare capacity to accommodate additional members.

10.4.4 Built Facilities

Current Provision

Across the district there are a number of built sports facilities. These include:

Artificial Turf Pitches – 7 pitches are located across the district (Steyning Grammar School, Weald School, Bluecoats Sport Centre, Tanbridge House School, Millais School and Farlington School).

Synthetic Athletics Track – There are currently two athletic tracks in the district (6 lane track with 8 lane straight at Broadbridge Heath Leisure Centre/ 8 lane track at Rikkyo School). It should be noted that the track at Rikkyo

School is not for public use and therefore the main provision is at Broadbridge Heath. Nevertheless it was recognised that few area association athletic meetings are held on 6 lane tracks, therefore athletics meetings are more likely to use the 8 lane athletics track in the nearby authority of Crawley at K2.

Indoor Bowls Hall – There is currently 1 indoor bowls hall at Broadbridge Heath, which provides an 8 rink facility.

Health and Fitness – According to the Active Places Power, the District has some sixteen health and fitness facilities with a total of 643 stations. This is slightly lower than the average across the South East region where the average across the district per 100 residents is 5.27 compared the regions average of 5.66.

Facilities are mainly clustered around the Horsham Town, but there are also sizeable facilities in Billingshurst, Henfield and Steyning as well as some of the other larger settlements.

Indoor Tennis – There is currently no provision for indoor tennis across the District. On average, local authority areas in the South East of England as a whole should have 0.03 courts for every thousand residents.

Sports Halls – The District has a sports hall with at least three badminton courts in 13 of its 22 wards. The study identified that there was an over provision of sports halls. The Active Places Power data base indicates that there is 98.3sqm of halls per 1000 residents compared with 88.2sqm in the South East region and 80.7sqm in England as a whole. Therefore the provision in the District is some 22% higher than the England average. Nonetheless 12 of the 22 wards (Trafalgar, Nuthurst, Bramber, Upper Beeding and Woodmancote, Forest, Denne, Broadbridge Heath, Rudgwick, Cowfold, Shermanbury and West Grinstead, Steyning, Southwater, Henfield, Itchingfield, Slinfold and Warnham) have access to a level of provision that is at least 25% above the South East average.

The Sport England Facilities Model identifies that nearly two thirds of sports halls within the District are on school sites. The age of the stock of hall buildings is relatively old with no new hall being built within the last 10 years.

Swimming Pools – The District has four 25m indoor pools located at Billingshurst, Bluecoats – Christ Hospital, Pavilions in the Park – Horsham and Steyning and has a combined water area of some 1,451sqm. However as Bluecoats provides private membership this should be deducted from the total which leaves the total provision of 1,138sqm.

The Sport England Facilities Model identifies that pools within the District are relatively modern and attractive and satisfy 92.3% of the current demand from Horsham District residents.

Evidence

- The Horsham District Sport, Open Space and Recreation Assessment (2014)
- Active Place Power

- Sport England Facilities Planning Model – Strategic assessment of need for swimming provision and sports hall provision. (September 2013)

Summary, Future Need and Funding

Artificial Turf Pitches – The study identified that each of the larger settlements should have at least one 3G Artificial Turf Pitch. Therefore the priority areas are Henfield, Pulborough, Southwater and Storrington-Sullington. In addition it is desirable for Horsham to also have a 3G Artificial Turf Pitch.

Synthetic Athletics Track – The Broadbridge Heath track will be lost following the proposed closure of the Broadbridge Heath Leisure Centre. It is therefore proposed that there is a relocation of the track to provide facilities on the site of Tanbridge House School.

Health and Fitness – The study identified that because the current level of accessibility to facilities is so good it is unlikely that there is a need for more provision.

Indoor Tennis – The study identified that if the Horsham District were to have the average level of provision it would require four indoor courts. It was recommended that the District Council should investigate the potential demand for indoor tennis facilities.

Sports Halls – The study concluded that the District does not need any additional sports halls, although the current stock of buildings is ageing. In those areas where provision is low or facilities are of poor quality improvements or additional provision may be required to accommodate additional capacity from additional growth.

Swimming Pools – The study identified that there is no need for any additional provision. However there will be a need for primarily cosmetic reinvestment in the Council's existing pools within the next decade to keep it up to date and accommodate additional capacity from additional growth.

Funding for the improvements identified above will be funded through the CIL and if appropriate through S106.

10.4.5 Village and Community Halls

Current Provision

There are 80 village/community halls located across the District, of which 49 are in rural areas and 31 in Horsham itself. Only the Parish of Parham does not have a village hall and the unparished areas of Horsham.

Evidence Base

- The Horsham District Sport, Open Space and Recreation Assessment (2014)

Summary, Future Provision and Funding

The study concluded that there is a need for Parishes in the rural parts of the District to identify the extent to which there is a need to extend, upgrade or replace the halls in their areas and identified the priority areas. The unparished areas within Horsham Town do not have dedicated community halls and therefore new/shared facilities may be required in these locations.

These schemes will either be funded through the CIL or where there is a requirement for an upgrade to an existing facility it is likely that this will be through the Parish Council's 'meaningful proportion' of CIL contributions. The percentage of the contribution will be dependent on if the community has an adopted Neighbourhood Development Plan.

10.4.6 Play Provision

Current Provision

Across the District there are currently 123 separate play areas, which occupy a land area of just over 57,000sqm or 5.7 ha. These range in size from 37sqm (Edinburgh Close, Southwater) and 6,600sqm sub-district play area in Horsham Park, with the largest neighbourhood play area of 2,442sqm (High Bar Land, Thakeham).

The provision across the District varies between locations. This includes no provision in Bramber, Five Oaks, Parham and Shermanbury.

Evidence

- The Horsham District Sport, Open Space and Recreation Assessment (2014)
- Play Strategy and Action Plan 2007 – 2012

Summary, Future Provision and Funding

The study identified that there is a general need for play provision and play facilities across the District, especially in relation to new housing developments and the quality of the existing provision. Given the poor play values of many existing sites, the main priorities are:

- Enhancing the quality of existing play facilities
- Identifying and developing more opportunities for "natural play"
- Ensuring that local greenspaces, especially those in housing areas with a significant proportion of families and children, provide high value play opportunities.

The Play Strategy also identified a number of improvements which includes two broad thrusts:

- To enhance four play areas a year, subject to the availability of adequate funding; current projects at Chess Brook Green – Henfield and Beech Road in North Horsham and the sub-district play area at Southwater Country Park.
- To rationalise the overall pattern of provision by removing some sites with low play value in order to concentrate resource on those with high value.

Funding for play facilities will be provided either as on-site provision by the developer, lottery funding or through the Community Infrastructure Levy.

10.4.7 Multi-Functional Greenspace

Current Provision

The gross area of Multi-Functional Greenspace (MFGS) is some 291 ha with the net area 282ha. The overall quantity or provision splits into:

- Amenity Greenspace 68ha gross
- Natural Greenspace 95ha
- Parks and recreation grounds 113ha

Total 275ha

Evidence

- The Horsham District Sport, Open Space and Recreation Assessment (2014)

Summary, Future Need and Funding

The study identified that the total provision of MFGS across the District was insufficient and not suitably accessible. It identified that either existing areas need to be improved or additional need is required. It identified the priority areas as Billingshurst, Henfield, Horsham, North Horsham, Pulborough, Southwater and Storrington and Sullington. The main priorities are to:

- Secure long term public access to strategically important privately owned sites
- To increase the amount of MFGS within easy reach of the residents of Horsham and Broadbridge Heath, for example by promoting continuous paths around their periphery in the urban fringe that link to the rights of way network and the wider countryside
- To enhance those existing greenspaces of low quality
- To ensure new developments include an appropriate amount of new greenspace provision.

Funding for additional MFGS will be provided by the s106 and CIL.

10.4.8 Sports Pitches

Current Provision

Across the District (excluding school pitches) there are 31 cricket pitches, 53 adult football pitches, 40 youth and mini football pitches and 8 rugby union pitches. In addition to these there are a number of pitches located on school sites across the District. These are 17 cricket pitches, 12 adult football pitches, 22 youth and mini football pitches and 21 rugby union pitches.

Evidence

- The Horsham District Sport, Open Space and Recreation Assessment (2014)

Summary, Future Provision and Funding

The study identified that the majority of sports pitches are adequate, however these are likely to require improvements with increased usage. Also the analysis suggested that participation in sport is likely to grow and therefore it is likely that additional provision will be required in the future. The study estimated that a mix of new growth and increased participation is likely to generate an increase in usage of 10%. It was also considered that the accessibility of cricket and football pitches is good, however rugby is much less. Over the years there has also been a significant increase in the participation of hockey.

The study also identified that there was a need for an artificial turf pitch.

Funding for additional sports pitches will be provided by the S106 and the CIL.

10.4.9 Youth Areas

Current Provision

The provision for teenagers and young people across the District include facilities on 34 sites located across 18 parishes with a total of 47 facilities which are:

- Ball courts 7
- Ball Walls 1
- Basketball area 12
- Skateboard parks 17
- Youth shelter 10

At present only Amberly, Rudgwick and Storrington and Sullington come close to meeting the standards set out in the Open Space and Recreation Assessment, with 17 parishes having no youth provision.

Evidence

- The Horsham District Sport, Open Space and Recreation Assessment (2014)

Summary, Future Provision and Funding

The study identified that the provision for youth areas across the District is inadequate in the majority of settlements. The larger settlements of Billingshurst, Horsham, Pulborough, Southwater and Storrington and Sullington should all have a higher quality standard of provision to meet the needs of the community.

Funding for youth areas will come forward through the CIL and S106 contributions.

10.4.10 Library

Current Provision

The District is well served by Library provision. There are currently 6 Libraries located across the district:

- Horsham
- Billingshurst
- Pulborough
- Steyning
- Storrington
- Henfield

Evidence

- Discussions and correspondence with WSCC
- Library Service Review (Nov 2009)

Summary, Future Need and Funding

WSCC Have identified that increased growth will put additional pressure on the existing library services, therefore most libraries across the District will require improvements and upgrades to support growth.

The funding provision for future library provision will come forward through the CIL.

10.5 Public Services

10.5.1 Fire and Rescue

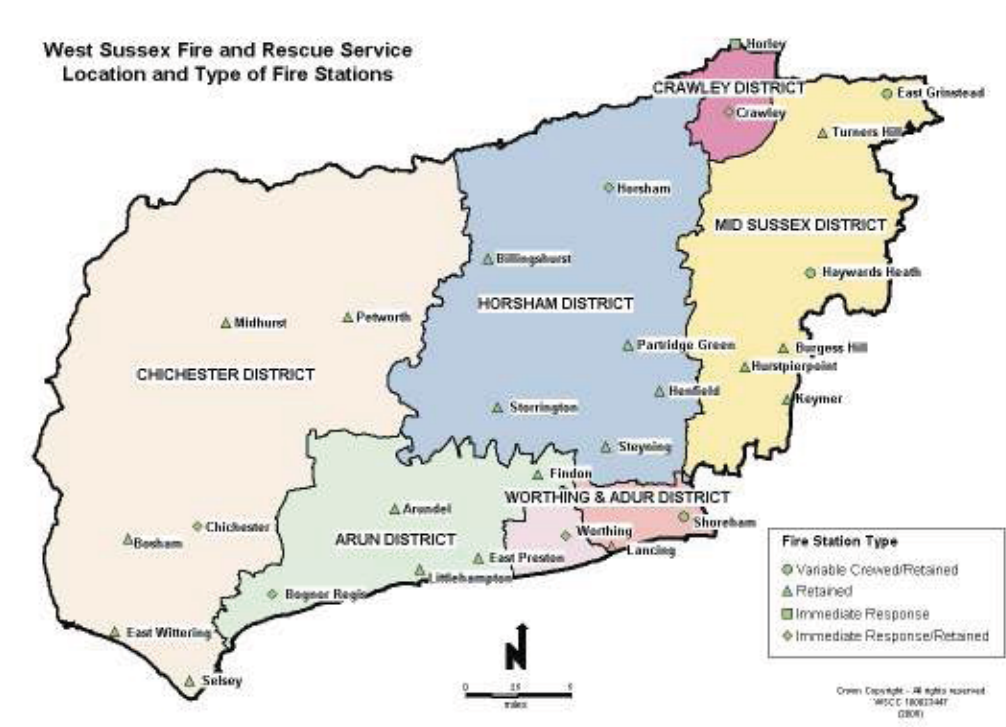
Current Provision

WSCCI is the Fire Authority and provides the Fire and Rescue for the residents and businesses within West Sussex. West Sussex Fire and Rescue Service is a service that employs 950 people, with a revenue budget of £36 million in 2008/2009. The West Sussex Fire and Rescue Service Plan 2010 – 2015 sets out five strategic aims – reducing the number of emergency incidents and their consequences; working with their partners to build a safer, stronger, healthier and more sustainable community; Safe, healthy and competent employees' provide value for money services; and reduce the impact on the environment.

The main fire station is in Horsham Town, which is an immediate response station. This means that it provides 24 hour cover for the district and has two Immediate Response fire engines and other specialist vehicles. There are also five retained fire stations at:

- Billingshurst

- Partridge Green
- Storrington
- Steyning
- Henfield



Evidence

- West Sussex Fire and Rescue Service Plan 2010 - 2015

Summary, Future Need and Funding

The provision of the fire service across the District is considered to be adequate. There is however discussions regarding the re-location of the existing fire station located along Hurst Road, Horsham to be moved to the Land West of Horsham site and be located next to the new junction. Funding for this will be provided by WSCC and developer contributions through a S106 agreement.

Funding for the fire service generally comes from three sources which include WSCC through Council Tax, Government funding and from developer contributions through S106. S106 contributions specifically relates to fire hydrants to ensure the adequate access and supply of water for fire fighting.

10.6 Utilities

10.6.1 District Energy Networks

Current Provision

Currently there are no district energy networks located across the District, however this is currently being explored further.

Evidence

- Carbon Trust

Summary Future Need and Funding

Any schemes or planning applications for district energy networks across the District will be developer funded.

10.6.2 Gas

Current Provision

The provision of gas across the district is supplied by Southern Gas, which is part of Scotia Gas Networks. Scotia Gas Networks is the UK's second largest distribution network company where the primary focus is on delivering gas to customers.

Evidence

- Southern Gas Business Plan 2011 (revised May 2012)
- Southern Gas Networks Capacity Investment Plan

Summary, Future Need and Funding

Each individual sites or schemes will be costed on a site by site basis. Nevertheless it is likely that the cost of connection and provision of gas on a site would be dealt with by the developer or supplier, however this will be dependent on the location and scale of the proposal.

Scotia Gas Networks funding for infrastructure projects is regulated by OFGEM and as such they do not draw funding from the CIL. The infrastructure funding is based around economic test criteria, whereby the developer contributes to infrastructure delivery costs deemed uneconomic by Scotia Gas testing procedure.

10.6.3 Electricity

Current Provision

Electricity across the District is provided by UK Power Networks. There are a number of substations located across the district. These are at:

- Brockhurst Wood
- Southwater
- Cowfold
- Pulborough
- Ashington
- Storrington
- Steyning

Evidence

- UK Power Networks Business Plan 2015 – 2023
- UK Power Networks – Long Term development Statement

Summary, Future Need and Funding

New developments will be assessed when they come forward. Ofgem discourages Electricity Distribution Companies from investing speculatively in their infrastructure ahead of confirmed requirements.

UK Power Network's asset replacement programmes provides the opportunity to rethink the way in which the infrastructure is developed to meet future customer needs particularly for connections to green and renewable energy sources.

10.6.4 Water Supply, Wastewater Treatment and Sewerage

Current Provision

Thames Water is the sewerage undertaker for the north eastern corner of the Horsham District. Thames Water investment programmes are based on a 5 year cycle known as the Asset Management Plan (AMP) process. Thames Water is currently in the AMP5 period, which runs from 1st April to 31st March 2015 to 31st March 2020. As part of their draft five year business plan Thames Water advise OFWAT on the funding required to accommodate growth to ensure that treatment works can continue to meet the standard required by their treatment consents. Thames Water base their investment programmes on a range of factors, including population projections and development plan allocations.

Water supply across the Horsham District is primarily provided by Southern Water.

In May 2010 Crawley Borough Council, Horsham District Council, Mid Sussex District Council, and Reigate and Banstead Borough Council appointed Entec on a joint basis to undertake a Water Cycle Study (WCS) for the Gatwick sub-region.

The study investigated whether there is sufficient water supply and sewage treatment capacity in the region to accommodate the level of residential and economic growth up to 2026. In doing so the study played an important role in informing the approach of each of the contributing authorities Plans, when identifying strategic development locations and drafting policies relating to sustainability, climate change, and flood risk.

The document was agreed by the four local authorities, Southern Water, South East Water, Sutton & East Surrey Water, Thames Water, and the Environment Agency.

Evidence Base

- Water Cycle Study 2013
- Southern Water Asset Management Plan 5 (2010 – 2015)
- Draft Water Resources Management Plan 2015 – 2040
- Thames Water Asset Management Plan

Summary Future Need and Funding

Although the South East is identified as being subject to significant water stress, the Water Cycle Study outlines that through a twin-track approach of demand management (customer metering, leakage reduction etc). The study also acknowledged resource development (bulk water supply transfer from other areas). There is sufficient water supply to accommodate the planned growth in the Gatwick sub-region.

The study considered development in two locations identified in the *Leading Change in Partnership to 2026 and Beyond* Issues and Options Consultation document which drain to the Horsham WwTW (Waste water Treatment Works); North Horsham and Southwater. The study found that there was capacity within the current flow consent to accommodate growth within the planned trajectory for both locations, however investment would be required to connect the Southwater site to the Horsham WwTW.

Therefore it is likely that the increased housing at Southwater would require investment at the Horsham Waster Water Treatment Site. This is likely to be funded either directly by the developer or through S106 contributions, depending when the site comes forward for development.

Thames Water have identified that CIL contributions could be used for enhancements to the sewerage network beyond that covered by the Water Industry Act and sewerage undertakers, for example by providing greater levels of protection for surface water flooding schemes. No specific schemes have been identified within the AMP5, however this may change once the AMP6 has been prepared.

10.6.5 Waste and Recycling

Current Provision

West Sussex County Council's Role: - The Waste Local Plan covers the period to 2013 and sets out the vision and strategic objectives. It includes strategies for waste planning and uses specific policies to deliver those strategies, together with generic development management policies against which proposals for waste development are assessed.

The County Council's role as Waste Disposal Authority (WDA) is to co-ordinate and manage the disposal of municipal waste, which includes household, some commercial and industrial waste, and some waste deposited.

Landfill site: A large proportion of the County's wastes ends up in landfill sites. One of these landfill sites is located to the North of Horsham at Brookhurst Wood. The WSCC Council Annual Monitoring Report 2012/2013 has identified that in its remaining permitted capacity there is capacity for 0.98 million tonnes.

Horsham District Council's Role: - Horsham District Council is the collection authority for waste across the Horsham District which is collected through the Acorn Waste Scheme. This collects all general refuse, glass,

paper, plastic and metals, as well as garden waste. Therefore the function of the Council includes all issues associated with collection to ensure there are enough vehicles, the vehicles can be accommodated on their depot and associated maintenance.

Once waste is collected by the District Council it is delivered to one of the WSCC disposal sites.

The District council currently bases all of the refuse and recycling vehicles at the District Council's depot at Hop Oast. There are currently proposals for this to expand on the existing site. Funding for this has already been agreed through the Council's capital budget.

The tables below shows the Minerals and Waste Sites located within the District:

| Type of Site | Location |
|--|--|
| HWRS/WTS Sites (Municipal Solid Waste) | Billingshurst, Junction of A272 & A29 Bypass, Newbridge Lane |
| HWRS/WTS Sites (MSW Waste) | Horsham HWRS, Hop Oast Roundabout |
| Council Transfer Stations | Broadbridge Heath Depot, Worthing Road, Broadbridge Heath |
| Leachate Treatment Site | Warnham Leachate Plant, Warnham Brickworks, Langhurst Wood Road |
| Mechanical and Biological Sites | Brookhurst Wood, Warnham |
| Thermal Treatment Sites | Oakleaves Pet Crematorium, St Andrews Farm Kennels, Brooks Green |
| Soil Treatment Sites | Holmbush Farm Soil Screener, Faygate |
| Inert Landfill Sites | Skinfold Park Golf & Country Club, Stane Street. |
| Inert Recovery Projects | Horsham Golf Park (Golf Course construction) |
| Inert Recovery Projects | Brookhurst Wood |
| Non Inert Landfill | Brookhurst Wood |
| Wastewater Treatment Sites | Horsham Waste Water Treatment Works, Christ's Hospital |

Evidence Base

- West Sussex Waste Plan (Submission)
- West Sussex Minerals Local Plan and Waste Local Plan – Annual Monitoring Report – 2012/2013

Summary Future Need and Fundings

There is currently capacity at the sites across the district to accommodate new growth as set out in the Horsham District Planning Framework. The site at Broadbridge Heath which is currently used as a County Transfer Station is owned by West Sussex County Council. This is likely to part of the 'Broadbridge Heath Quadrant', which is an area proposed to undergo major regeneration for a mixed use scheme. This site therefore would need to be located elsewhere within the district.

Appendix 1: Infrastructure List

Note: * means that further evidence needs to be collected on the cost of a scheme and source of funding

| Infrastructure Category | Scheme | Phasing / Priority for Delivery | Estimated Cost / Committed Funding | | Evidence document | Delivery Responsibility | How it will be paid |
|-------------------------|---|---------------------------------|------------------------------------|-------|---|-------------------------|---------------------|
| | | | CIL | Other | | | |
| Amberley | | | | | | | |
| Transport | Air Quality - bus service improvements and quality including cleaner buses and sufficient service to Amberley Station | 2015 - 2025 | | | West Sussex County Council - Blue Book | WSSC | CIL* |
| Transport | Car parking at Amberley Railway Station | 2015 - 2025 | | | West Sussex County Council - Blue Book | WSSC | CIL* |
| Ashington | | | | | | | |
| Transport | Speed Management - A24 south of Ashington | 2015 - 2020 | £24,800 | | West Sussex County Council - Blue Book | WSSC | CIL/S106 |
| Education / Transport | School Safety Zone - Ashington First School | 2015 - 2025 | | | West Sussex County Council - Blue Book | WSSC | CIL* |
| Billingshurst | | | | | | | |
| Transport | Footpath - from lower bridge to Jubilee Fields | 2015 - 2020 | £20,000 | | West Sussex County Council - Rights of Way Improvements | WSSC | CIL* |

| Infrastructure Category | Scheme | Phasing / Priority for Delivery | Estimated Cost / Committed Funding | | Evidence document | Delivery Responsibility | How it will be paid |
|-------------------------|--|---------------------------------|------------------------------------|--------------|---|-------------------------|---------------------|
| | | | CIL | Other | | | |
| Transport | Improvements to bus stop infrastructure | 2015 - 2020 | £12,000 | | Programme West Sussex County Council | WSCC | CIL |
| Transport | Improvements to Billingshurst railways station access | 2015 - 2020 | | | West Sussex County – Blue Book | WSCC | S106 |
| Transport | Junction improvement – A29 Oakhurst Lane | 2015 - 2025 | | | West Sussex County – Blue Book | WSCC | CIL* |
| Transport | Traffic calming – entrance to Billingshurst on East Street | 2015 - 2025 | | | West Sussex County Council – Blue Book | WSCC | CIL* |
| Transport | Improvements to the school travel plan for Billingshurst | 2015 - 2025 | £95,486 | | West Sussex County Times – IWP | WSCC | CIL |
| Social Infrastructure | Village enhancement scheme – Billingshurst Station (delivery of scheme to improve accessibility and streetscene) | 2020 | | £100,000 | | WSCC | S106 |
| Education | Secondary Schools - Strategic development East of Billingshurst will require land and contributions towards | 2015-2020 | | £ 10 million | | WSCC | S106 |

| Infrastructure Category | Scheme | Phasing / Priority for Delivery | Estimated Cost / Committed Funding | | Evidence document | Delivery Responsibility | How it will be paid |
|-------------------------|--|---------------------------------|------------------------------------|--------------|------------------------------|-------------------------|---------------------|
| | | | CIL | Other | | | |
| | expansion of The Weald school and contribution towards Multi Use Games Area (MUGA) includes sixth form accommodation expansion | | | | | | |
| Education | Primary Schools - Strategic development East of Billingshurst will require land and contributions towards the construction costs of one new 1FE primary school | 2015 - 2020 | | £4-6 million | West Sussex County Council | WSSC | S106 |
| Education | Early Years - strategic development East of Billingshurst will require contributions towards an extra classroom at the primary school to provide a pre-school facility | 2015 - 2020 | | £250,000 | West Sussex County Council | WSSC | S106 |
| Social Infrastructure | Library Service - upgrading of facilities | 2015 - 2031 | £30,000 | | West Sussex County Council – | WSSC | CIL |

| Infrastructure Category | Scheme | Phasing / Priority for Delivery | Estimated Cost / Committed Funding | | Evidence document | Delivery Responsibility | How it will be paid |
|-------------------------------|--|---------------------------------|------------------------------------|---|--|-------------------------|---------------------|
| | | | CIL | Other | | | |
| | to meet increased demand from new developments | | | | Library Service consultation response (4 th Feb 2014) | | |
| Social Infrastructure | Billingshurst Play Area improvements | 2015 - 2031 | £700,000 | £700k (£50k for each of the seven small play areas, £100k for each of the three neighbourhood play areas) | Green Space Strategy | HDC | CIL |
| Public and Community Services | Fire & Rescue - Provide hydrant within drill yard - Billingshurst Fire Station | 2015 - 2020 | £10,000 | | West Sussex County Council - Fire and Rescue consultation response (14 th March 2014) | WSSC | CIL |
| Community Facilities | 3G pitch | | £1,461,000 | £840k for pitch, £575k for 4 team changing pavilion, maintenance cost of £36k pa, excludes | Open Space Sport and Recreation Study | HDC | CIL |

| Infrastructure Category | Scheme | Phasing / Priority for Delivery | Estimated Cost / Committed Funding | | Evidence document | Delivery Responsibility | How it will be paid |
|--------------------------|--|---------------------------------|------------------------------------|---------------|--|-------------------------|---------------------|
| | | | CIL | Other | | | |
| | | | operating cost of pavilion | | | | |
| Bramber | | | | | | | |
| Transport | New or improved footway – Maudlyn Lane to Sopers Lane | 2015 - 2025 | £6,000 | | West Sussex County Council – Forward Programme | WSSC | CIL |
| Green Infrastructure | Allotments | 2015-2025 | £100,000 | | Sport and Open Space Assessment | HDC / Parish Council | CIL |
| Broadbridge Heath | | | | | | | |
| Education | Secondary Schools - Allocated Development at West of Horsham requires expansion of Tanbridge House School to 10FE in permanent accommodation | 2015 – 2020 | | £5.75 million | Land West of Horsham Masterplan | WSSC | S106 |
| Education | Primary School | | | | Land West of Horsham Masterplan | WSSC | S106 |
| Social Infrastructure | Library Service – introduction of “click and collect” facility to meet demand from | 2015 – 2031 | £30,000 | | West Sussex County Council | WSSC | CIL |

| Infrastructure Category | Scheme | Phasing / Priority for Delivery | Estimated Cost / Committed Funding | | Evidence document | Delivery Responsibility | How it will be paid |
|-------------------------|---|---------------------------------|------------------------------------|-------|--|-------------------------|---------------------|
| | | | CIL | Other | | | |
| | new developments | | | | | | |
| Community Facilities | Improvements and provision of community facilities – Land West of Horsham | | | | Land West of Horsham Masterplan | HDC / Developer | S106 |
| Community Facilities | Improvements to existing play areas | | | | | HDC | S106/CIL |
| Transport | Cycle Improvement – Old Wickhurst Lane | 2015 – 2025 | | | West Sussex County Council | WSSC | CIL* |
| Transport | New transport infrastructure including new junction and a link road at Land West of Horsham | 2014-2020 | | | West Sussex County Council / Developer | WSSC | S106 |
| Coldwaltham | | | | | | | |
| Transport | School safety zone – St James' Primary School | 2015 – 2025 | £10,000 | | West Sussex County Council | WSSC | CIL |
| Colgate | | | | | | | |
| Transport | Footbridge – over the A264 | | | | West Sussex County Council – Blue Book | WSSC | CIL* |
| Transport | Pedestrian Scheme - provision of footway on south side of A264 from Holmbush Farm to layby | 2015 – 2025 | | | West Sussex County Council – Blue Book | WSSC | CIL* |

| Infrastructure Category | Scheme | Phasing / Priority for Delivery | Estimated Cost / Committed Funding | | Evidence document | Delivery Responsibility | How it will be paid |
|-------------------------|---|---------------------------------|------------------------------------|-------|--|-------------------------|---------------------|
| | | | CIL | Other | | | |
| Transport | Bus stop improvements – A264 Faygate to Crawley | 2015 – 2025 | | | West Sussex County Council – Blue Book | WSSCC | CIL* |
| Transport | Route Safety Scheme – A264 Faygate to Crawley | 2015 – 2025 | £80,000 | | West Sussex County Council – Forward Programme | WSSCC | CIL |
| Cowfold | | | | | | | |
| Social Infrastructure | Air Quality - study to look at means of reducing traffic emissions and congestion in village centre (either side of A272 / A281 double mini roundabout) | 2015 – 2025 | | | Air Quality Action Plan | | CIL |
| Transport | Cycling Facilities – 3m shared cycle track widen and resurface / crossing point and signing | 2015 | £7,886 | | West Sussex County Council | WSSCC | CIL |
| Transport | Speed Management - A281 southbound entrance to Cowfold (possibly including Speed Camera or Vehicle Activated | 2015 – 2025 | | | West Sussex County Council - Blue Book | WSSCC | CIL* |

| Infrastructure Category | Scheme | Phasing / Priority for Delivery | Estimated Cost / Committed Funding | | Evidence document | Delivery Responsibility | How it will be paid |
|-------------------------|---|---------------------------------|------------------------------------|-------|--|-------------------------|---------------------|
| | | | CIL | Other | | | |
| | Sign - if site meets criteria) | | | | | | |
| Transport | Improved footway – A281/230 (north of village) | 2015 | £94,900 | | West Sussex County Council – Forward Programme | WSSC | CIL |
| Transport | Improved footway – footway – A281 (Hare & Hounds Public House southwards) | 2015 | £99,000 | | West Sussex County Council – Forward Programme | WSSC | CIL |
| Transport | Bus stop improvements – Bus Shelter at A281 outside Godmans Court | | | | West Sussex County Council – Blue Book | WSSC | CIL* |
| Faygate | | | | | | | |
| Transport | | 2015 | £15,000 | | West Sussex County Council IWP | WSSC | CIL |
| Henfield | | | | | | | |
| Transport | VAS sign – London Road | 2015 | £15,000 | | West Sussex County Council IWP | WSSC | CIL |
| Transport | School Safety Zone - St Peter's CE Primary School | 2015 – 2025 | £10,000 | | West Sussex County Council | WSSC | CIL |

| Infrastructure Category | Scheme | Phasing / Priority for Delivery | Estimated Cost / Committed Funding | | Evidence document | Delivery Responsibility | How it will be paid |
|-------------------------|--|---------------------------------|------------------------------------|---|---|-------------------------|---------------------|
| | | | CIL | Other | | | |
| Social Infrastructure | Town / village enhancement scheme - accessibility improvements and access to Farmers Market, measures identified in TPG study. | 2015 – 2025 | £8,099 | | West Sussex County Council TPG study Forward Programme | WSSC | CIL |
| Social Infrastructure | Library Service - upgrading of facilities to meet increased demand from new developments | 2015 – 2031 | £30,000 | | West Sussex County Council | WSSC | CIL |
| Green Infrastructure | Allotments | | £30,000 | | PPG17 Assessment | HDC / Parish Council | CIL |
| Community Facilities | Henfield Play Facility improvements | | £600,000 | £600k (£50k for each of the four small play areas, £100k for each of the four neighbourhood play areas) | Green Space Strategy | HDC | CIL |
| Community Facilities | 3G pitch | | £1,461,000 | | Open Space Sport and Recreation Study | HDC | CIL |

| Infrastructure Category | Scheme | Phasing / Priority for Delivery | Estimated Cost / Committed Funding | | Evidence document | Delivery Responsibility | How it will be paid |
|-------------------------|--|---------------------------------|------------------------------------|-------|---|-------------------------|---------------------|
| | | | CIL | Other | | | |
| Horsham | | | | | | | |
| Transport | Cycle Parking Scheme - Additional/improved parking facilities in town locations as well as leisure routes | 2015 – 2025 | | | Horsham District Cycle Forum Long List – January 2014 | WSCC | CIL* |
| Transport | Cycling facilities - Station Road to North Street (route to provide improved access to railway station. There will need to be a combination of signs and further measures to remove parking to allow enough space for improvement – also part of the route is a freight route) | 2015 – 2025 | | | Cycling Strategy Discussion sheet | WSCC | CIL* |
| Transport | Cycle Improvement Scheme – from North Street, Railway Station West Side to Railway Station East Side – creation of cycle route by | 2015 – 2025 | | | Horsham Cycle Forum – Prioritised List of Schemes | WSCC | CIL* |

| Infrastructure Category | Scheme | Phasing / Priority for Delivery | Estimated Cost / Committed Funding | | Evidence document | Delivery Responsibility | How it will be paid |
|-------------------------|---|---------------------------------|------------------------------------|------------|---|-------------------------|---------------------|
| | | | CIL | Other | | | |
| | allowing cycle use through the existing railway underpass via Winterton Court, New Street and Station Road | | | | | | |
| Transport | Horsham Railway Station – access improvements | 2015 – 2025 | | | West Sussex County Council – Blue Book | WSSC | CIL* |
| Transport | Horsham Bus Station – improvements to address inadequate capacity and accommodate bus links to new developments | 2015 – 2025 | | | West Sussex County Council discussions with Metro Bus | WSSC / Metro Bus | CIL* |
| Transport | A24 / A264 Great Daux Roundabout | 2015 – 2020 | | £4,422,000 | Horsham District Transport and Development Study 2014 | Developer / WSSC | S106 |
| Transport | A264 / B2195 Moorhead Roundabout | 2015 – 2020 | | £110,000 | Horsham District Transport and Development Study 2014 | Developer / WSSC | S106 |
| Transport | A24 / B2237 Robin Hood Roundabout | 2015 – 2020 | | £660,000 | Horsham District Transport and | Developer / WSSC | S106 |

| Infrastructure Category | Scheme | Phasing / Priority for Delivery | Estimated Cost / Committed Funding | | Evidence document | Delivery Responsibility | How it will be paid |
|-------------------------|---|---------------------------------|------------------------------------|----------|--|--------------------------------------|---------------------|
| | | | CIL | Other | | | |
| Transport | Access and improvements onto the A264 for Land North of Horsham | 2015 – 2025 | | | Development Study 2014 | | |
| Transport | A24 / B2237 Worthing Road, Hop Oast Roundabout | 2015 – 2020 | | £264,000 | Horsham District Planning Framework Horsham District Transport and Development Study 2014 | Developer / WSCC Developer / WSCC | S106 S106 |
| Transport | Junction Improvement – Improvements to the junction of Hills Farm Lane/Guildford Rd (interim) – including new Toucan Crossing | 2015 – 2018 | | | West Sussex County Council / Land West of Horsham Development | Developer / WSCC | S106 |
| Transport | Route Safety Scheme – Traffic Calming Scheme – Hills Farm Lane/Granary Way/Blackbridge Lane | 2015 – 2018 | | £95,955 | West Sussex County Council / Land West of Horsham Development | Developer / WSCC | S106 |
| Transport | New Transport Infrastructure at | 2015-2020 | | | Land West of Crawley AAP | Developer / WSCC | S106 |

| Infrastructure Category | Scheme | Phasing / Priority for Delivery | Estimated Cost / Committed Funding | | Evidence document | Delivery Responsibility | How it will be paid |
|-------------------------|---|---------------------------------|------------------------------------|-------|--|------------------------------|---------------------|
| | | | CIL | Other | | | |
| | Kilnwood Vale which includes improvements to the A264 , including a new roundabout to provide access to the site. | | | | | | |
| Transport | Pedestrian linkages for Land North of Horsham | 2015-2025 | | | Horsham District Planning Framework | Developer / WSCC | S106 |
| Health | Provision of health care facilities | | | | | Developer / CCG/ NHS England | S106 |
| Education | Safer Routes to Schools/Travel Plan – Heron Way | 2015 – 2020 | £10,000 | | West Sussex County Council – Blue Book | WSCC | CIL |
| Education | Safer Routes to School scheme – The Forest School (Comptons Lane) | 2015 – 2020 | £10,000 | | West Sussex County Council – Blue Book | WSCC | CIL |
| Education | School Safety Zone/Travel Plan – St Marys Primary School | 2015 – 2020 | £10,000 | | West Sussex County Council – Blue Book | WSCC | CIL |
| Education | School Safety Zone/Travel Plan – Greenway and Trafalgar School | 2015 – 2020 | £10,000 | | West Sussex County Council – Blue Book | WSCC | CIL |
| Education | Safer Routes to Schools – Horsham Nursery School & | 2015 – 2020 | £10,000 | | West Sussex County Council – Blue Book | WSCC | CIL |

| Infrastructure Category | Scheme | Phasing / Priority for Delivery | Estimated Cost / Committed Funding | | Evidence document | Delivery Responsibility | How it will be paid |
|-------------------------|---|---------------------------------|------------------------------------|---------------|---|--------------------------|--------------------------------|
| | | | CIL | Other | | | |
| | Kingslea | | | | | | |
| Education | Safer Routes to School Scheme – Tanbridge House School | 2015 – 2020 | £10,000 | | West Sussex County Council – Blue Book | WSSC | CIL |
| Education | School Safety Zone – Queen Elizabeth Silver Jubilee School | 2015 – 2020 | £10,000 | | West Sussex County Council – Blue Book | WSSC | CIL |
| Transport | Traffic engineering scheme – town centre enhancement scheme | 2015-2018 | | £420,000 | | WSSC / HDC | Co-funded between WSSC and HDC |
| Transport | Allocated Development Site – West of Horsham Site – Road Network Improvement – New vehicular access onto Hills Farm Lane North to serve first phase of Berkeley development | 2015 | | | Land West of Horsham – Strategic Development Site | Developer / WSSC | S106 |
| Transport | Traffic calming – Hills Farm Lane and Blackbridge Lane | 2015 | | £96,900 | Land West of Horsham – Strategic Development Site | Developer / WSSC | S106 |
| Transport | New railway Station and Parking in the Land West of | 2015 – 2020 | | £13.6 million | | Developer / Network Rail | S106 |

| Infrastructure Category | Scheme | Phasing / Priority for Delivery | Estimated Cost / Committed Funding | | Evidence document | Delivery Responsibility | How it will be paid |
|-------------------------|--|---------------------------------|------------------------------------|-------|---|----------------------------------|---------------------|
| | | | CIL | Other | | | |
| | Horsham Strategic Site | | | | | | |
| Transport | Bus services for Land North of Horsham | 2015-2025 | | | Horsham District Planning Framework | WSCC/Developer and bus operators | S106 |
| Social Infrastructure | Library Service – upgrading of facilities to meet increased demand from new developments across the wider catchment area served by Horsham Library | 2015 – 2031 | £80,000 | | West Sussex County Council – Library Services | WSCC | CIL |
| Social Infrastructure | Library Service – north of Horsham town centre – introduction of “click and collect” facility if proposed new developments go ahead | 2015 – 2031 | £30,000 | | West Sussex County Council – Library Services | WSCC | CIL |
| Education | Route Safety Scheme – Lambs Farm Road, Roffey – Traffic management | 2015 – 2025 | £10,000 | | West Sussex County Council | WSCC | CIL |
| Education | School Safety Zone/Travel Plan – Littlehaven Primary School | 2015 – 2025 | £10,000 | | West Sussex County Council | WSCC | CIL |

| Infrastructure Category | Scheme | Phasing / Priority for Delivery | Estimated Cost / Committed Funding | | Evidence document | Delivery Responsibility | How it will be paid |
|-------------------------|---|---------------------------------|------------------------------------|----------------|---|-------------------------|---------------------|
| | | | CIL | Other | | | |
| Education | Safer Routes to School Scheme – Lambs Farm Road (St Robert Southwell School) | 2015 – 2025 | £10,000 | | West Sussex County Council | WSSC | CIL |
| Education | Primary Schools – North Horsham development will require land and contributions towards the construction costs for two new primary schools to include early years and community facilities. | 2015 – 2020 | | £16-18 million | Horsham District Planning Framework / Discussions with WSSC | Developer / WSSC | S106 |
| Education | Secondary Schools – North Horsham development will require land and contributions towards the construction costs for a new secondary school (6FE) | 2015 – 2020 | | | Horsham District Planning Framework / Discussions with WSSC | Developer / WSSC | S106 |
| Education | Special Education – North Horsham development will require land and contributions towards | 2015 – 2020 | | | Horsham District Planning Framework / Discussions with WSSC | Developer / WSSC | S106 |

| Infrastructure Category | Scheme | Phasing / Priority for Delivery | Estimated Cost / Committed Funding | | Evidence document | Delivery Responsibility | How it will be paid |
|-------------------------|--|---------------------------------|------------------------------------|-------|---|-------------------------|---------------------|
| | | | CIL | Other | | | |
| Education | <p>the construction costs of a new special school (minimum 60 places for ages 2-19)</p> <p>Early Years – 98 place co-located nursery/early years facility will require land and contributions. Co-location with the first of the two primary schools to be built.</p> | 2015 – 2020 | | | Horsham District Planning Framework / Discussions with WSCC | Developer / WSCC | S106 |
| Green Infrastructure | <p>The Green Grid Key Routes are a North Horsham to Town Centre and b. Holbrook Club to Town Centre via Novatis site.</p> <p>Enhancing access between MFGS and town centres and within easy reach of BBH and North Horsham by promoting continuous paths which link to</p> | 2015-2031 | £2.5M | | Open Space Sport and Recreation Study | WSCC / HDC | CIL |

| Infrastructure Category | Scheme | Phasing / Priority for Delivery | Estimated Cost / Committed Funding | | Evidence document | Delivery Responsibility | How it will be paid |
|-------------------------|---|---------------------------------|------------------------------------|------------|----------------------|-------------------------|---------------------|
| | | | CIL | Other | | | |
| | rights of way network | | | | | | |
| Green Infrastructure | Horsham townscape enhancement (place shaping) | | £40,000 | | Green Space Strategy | HDC | CIL |
| Green Infrastructure | Improved drainage on sports pitches | 2015-2020 | £500,000 | | Green Space Strategy | HDC | CIL |
| Green Infrastructure | Countryside sites – Visitor Improvements | 2015-2020 | £250,000 | | Green Space Strategy | HDC | CIL |
| | Warnham Nature Reserve | | | | | | |
| Community Facilities | Multi games area | 2015-2020 | £120,000 | | PPG17 Assessment | HDC | CIL |
| | King George V Playing Fields | | | | | | |
| Community Facilities | Land North of Horsham | 2015 - 2025 | | £7,103,000 | | HDC / Developer | S106 |
| Community Facilities | Horsham Play Area improvements (Play equipment, landscaping, fencing) | 2015 - 2013 | £3.3 million | | Green Space Strategy | HDC | CIL |
| | | | £3.3m (£50k for each of | | | | |

| Infrastructure Category | Scheme | Phasing / Priority for Delivery | Estimated Cost / Committed Funding | | Evidence document | Delivery Responsibility | How it will be paid |
|-------------------------|---|---------------------------------|---|-------|---------------------------------------|-------------------------------------|---------------------|
| | | | CIL | Other | | | |
| | | | the thirty small play areas, £100k for each of the eighteen neighbourhood play areas) | | | | |
| Community Facilities | 3G pitch - 3G sports pitch, changing rooms, parking | 2015-2020 | £1,461,000 | | Open Space Sport and Recreation Study | HDC | CIL |
| Community Facilities | Changing rooms and community facility improvements at neighbourhood recreation grounds and parks Changing rooms, community rooms (Bennetts Field, Roffey Social and Sports, Trinity, Horsham Park, | 2015-2025 | £3.3 million | | Green Space Strategy | HDC / Friends Groups / Sports Clubs | CIL/S106 |

| Infrastructure Category | Scheme | Phasing / Priority for Delivery | Estimated Cost / Committed Funding | | Evidence document | Delivery Responsibility | How it will be paid |
|-------------------------|--|---------------------------------|------------------------------------|-------|--|-------------------------|---------------------|
| | | | CIL | Other | | | |
| | Dutchells Pitches, Chennels Pitches, Mannings Heath) | | | | | | |
| Nuthurst | | | | | | | |
| Education | Safer Routes to School Scheme – St Andrews C of E Primary School, Nuthurst | 2015-2025 | £10,000 | | West Sussex County Council – Blue Book | WSSC | CIL |
| Pulborough | | | | | | | |
| Transport | Air Quality – speed limit changes including measures to smooth out traffic to reduce queues | 2015 – 2020 | | | Air Quality Action Plan for Storrington and Pulborough | WSSC | CIL* |
| Transport | Air Quality – promoting local use of cleaner vehicles and fuels including provision of public electric vehicle recharging bays | 2015 – 2020 | | | Air Quality Action Plan for Storrington and Pulborough | WSSC | CIL* |
| Transport | Air Quality – public transport improvement such as | 2015 – 2020 | | | Air Quality Action Plan for Storrington and | WSSC | CIL* |

| Infrastructure Category | Scheme | Phasing / Priority for Delivery | Estimated Cost / Committed Funding | | Evidence document | Delivery Responsibility | How it will be paid |
|-------------------------|--|---------------------------------|------------------------------------|-------|--|-------------------------|---------------------|
| | | | CIL | Other | | | |
| Transport | real time information at bus stops / mobile phone application Pedestrian enhancements – Provision of pedestrian in road warning signs and vehicle activated sign to manage traffic speeds in conjunction with possible minor amendments to the speed limit to improve pedestrian safety in the vicinity of A283 Stopham Road railway bridge | 2015 – 2020 | £35,000 | | Pulborough West Sussex County Council – Blue Book | WSCC | CIL |
| Transport | Pedestrian enhancements – Pedestrian crossing on A283 by railway station (east of Station Approach) | 2015 – 2015 | | | West Sussex County Council – Blue Book | WSCC | CIL* |
| Education | Education - contributions of £13,115 per head (Primary), £19,762 | 2015 – 2031 | | | West Sussex County Council – School Places Plan | WSCC | S106 |

| Infrastructure Category | Scheme | Phasing / Priority for Delivery | Estimated Cost / Committed Funding | | Evidence document | Delivery Responsibility | How it will be paid |
|-------------------------|--|---------------------------------|--|-------|---|-------------------------|----------------------------------|
| | | | CIL | Other | | | |
| | per head (Secondary) and £21,432 per head (6 th Form) to be sought from new development in the village (details to be confirmed following the completion of the SOP/EISS) | | | | | | |
| Social Infrastructure | Library Service – upgrading of facilities to meet increased demand from new developments | 2015 – 2031 | £30,000 | | West Sussex County Council – Library Services | WSSC | CIL |
| Social Infrastructure | Pulborough Play Facility improvements | | £200,000 £200k (£50k for each of the two small play areas, £100k for the neighbourhood play area) | | Green Space Strategy | HDC | CIL/HDC Annual Revenue Budget |
| Green Infrastructure | 3G pitch | £1,461,000 £840k for pitch, | | | Open Space Sport and Recreation Study | HDC | CIL |

| Infrastructure Category | Scheme | Phasing / Priority for Delivery | Estimated Cost / Committed Funding | | Evidence document | Delivery Responsibility | How it will be paid |
|-------------------------|---|--|------------------------------------|------------|---|--|---------------------|
| | | | CIL | Other | | | |
| | | £575k for 4 team changing pavilion, maintenance cost of £36k pa, excludes operating cost of pavilion | | | | | |
| Rudgwick | | | | | | | |
| Education | Safer Routes to School Scheme at Rudgwick Primary School consisting of a crossing point on Queen Elizabeth Road about 30m west of the junction with Princess Anne Road. | 2015 – 2020 | £5,000 | | West Sussex County Council | WSSC | CIL |
| Community Facilities | Refurbishment of the Jubilee Hall, Chursh Street | 2015-2020 | £50,000 | | | HDC /Parish Council | CIL |
| Rusper | | | | | | | |
| Education | Sixth Form – West of Bewbush / Kilnwood Vale development will require contributions towards | 2015 – 2020 | | £2 million | West Sussex County Council – Lane West of Crawley development | Developer / West Sussex County Council | S106 |

| Infrastructure Category | Scheme | Phasing / Priority for Delivery | Estimated Cost / Committed Funding | | Evidence document | Delivery Responsibility | How it will be paid |
|-------------------------|--|---------------------------------|------------------------------------|------------------|---|--|---------------------|
| | | | CIL | Other | | | |
| Education | appropriate facilities for sixth formers at Crawley secondary schools | | | | | | |
| Education | Secondary Schools – West of Bewbush/Kilnwood Vale strategic site will require expansion of a current secondary in Crawley, possibly Ifield or Holy Trinity by up to 3FE in total | 2015 – 2020 | | £9 million | West Sussex County Council – Land West of Crawley development | Developer / West Sussex County Council | S106 |
| Education | Primary Schools – West of Bewbush/Kilnwood Vale strategic site will require land and build of 2-3FE primary school and nursery | 2015 – 2020 | | £12 – 13 million | West Sussex County Council – Land West of Crawley development | Developer / WSCC | S106 |
| Shipley | | | | | | | |
| Transport | A24 Buckbarn – Increase length of northbound right turning lane | | | £100,000 | West Sussex County Council – Consultation | WSCC | CIL |
| Education | School Safety Zone – Shipley Primary School | | | £10,000 | West Sussex County Council | WSCC | CIL |

| Infrastructure Category | Scheme | Phasing / Priority for Delivery | Estimated Cost / Committed Funding | | Evidence document | Delivery Responsibility | How it will be paid |
|-------------------------|--|---------------------------------|------------------------------------|---------------|--|-------------------------|---------------------|
| | | | CIL | Other | | | |
| Southwater | | | | | | | |
| Transport | Junction Improvement – A24/B2237 Worthing Road (Hop Oast) Roundabout | | | £132,000 | West Sussex County Council | WSSC | S106 |
| Transport | Land Widening on the approaches to Hop Oast Roundabout on the A24 | | | | Horsham District Transport and Development Study | WSSC | S106 |
| Transport | Cycle/pedestrian bridge across A24 linking Southwater to Horsham | | | £1.87 million | West Sussex County Council | WSSC | S106 |
| Education | Secondary Schools - Strategic development West of Southwater will require contribution towards expansion of Tanbridge House school | 2015 -2020 | | £2 million | | WSSC | CIL/S106 |
| Education | Primary Schools – Strategic development West of Southwater will require contribution towards expansion of existing primary | 2015 – 2020 | | £2-3 million | West Sussex County Council | WSSC | CIL/S106 |

| Infrastructure Category | Scheme | Phasing / Priority for Delivery | Estimated Cost / Committed Funding | | Evidence document | Delivery Responsibility | How it will be paid |
|-------------------------|--|---------------------------------|---|-------|----------------------------|-------------------------|---|
| | | | CIL | Other | | | |
| Education | schools Early Years – strategic development in Southwater will require contributions to provide or expand a pre-school facility in the village, possibly in an extra classroom at an existing school. | 2015 – 2020 | £250,000 | | West Sussex County Council | WSSCC | CIL/S106 |
| Social Infrastructure | Library Service – upgrading of facilities to meet increased demand from new developments | 2015 – 2031 | £40,000 | | West Sussex County Council | WSSCC | CIL |
| Green Space | Allotments | 2015-2020 | | | Green Space Study | HDC/Developer | CIL/S106 |
| Green Space | Southwater Country Park Visitor Attraction | 2015 – 2025 | £5 million | | Green Space Strategy | HDC | CIL |
| Community Facilities | Southwater Play Area improvements | | £800,000 £800k (£50k for each of the ten small play areas, £100k for each of the three neighbourhood | | Green Space Strategy | HDC | HDC/CIL (HDC annual revenue budget £15k) |

| Infrastructure Category | Scheme | Phasing / Priority for Delivery | Estimated Cost / Committed Funding | | Evidence document | Delivery Responsibility | How it will be paid |
|-------------------------|---|---------------------------------|------------------------------------|---|--|-------------------------|---|
| | | | CIL | Other | | | |
| Community Facilities | Multi User Games Area & Football Wall | | play areas) | £160,000 | Parish Council Corporate Plan, HDC Play Strategy, Southwater Action Plan & Community Consultation 2005 | HDC / Parish Council | Lottery Grants, Local Authority contributions & developer contributions |
| Community Facilities | 3G pitch | | £1,461,000 | £840k for pitch, £575k for 4 team changing pavilion, maintenance cost of £36k pa, excludes operating cost of pavilion | Open Space Sport and Recreation Study | HDC | CIL |
| Utilities | Wastes Management Services - Horsham (Hop Oast) Household Waste Recycling Site: no current scheme, but capacity needed to | 2020-2031 | | £2,500,000 | Typical development Cost (Site Replacement) | WSSC | |

| Infrastructure Category | Scheme | Phasing / Priority for Delivery | Estimated Cost / Committed Funding | | Evidence document | Delivery Responsibility | How it will be paid |
|-------------------------|--|---------------------------------|------------------------------------|--------------------------------|----------------------------|-------------------------|---------------------|
| | | | CIL | Other | | | |
| | serve anticipated housing growth. | | | | | | |
| Steyning | | | | | | | |
| Education | Safer Routes to School Scheme - Steyning Grammar School | 2015 - 2025 | £30,000 | | West Sussex County Council | WSSC | CIL |
| Education | School Safety Zone - Ashurst Primary School | 2015 - 2025 | £10,000 | | West Sussex County Council | WSSC | CIL |
| Education | School Safety Zone - St Andrew's Primary School | 2015 - 2025 | £10,000 | | West Sussex County Council | WSSC | CIL |
| Education | School Safety Zone - Steyning Grammar School | 2015 - 2025 | £10,000 | | West Sussex County Council | WSSC | CIL |
| Social Infrastructure | Library Service - upgrading of facilities to meet increased demand from new developments | 2015 - 2031 | £30,000 | | West Sussex County Council | WSSC | CIL |
| Community Facilities | Steyning and Upper Beeding Play Facility improvements | | £500,000 | | Green Space Strategy | HDC | CIL |
| | | | | £(£50k each for the four small | | | |

| Infrastructure Category | Scheme | Phasing / Priority for Delivery | Estimated Cost / Committed Funding | | Evidence document | Delivery Responsibility | How it will be paid |
|-----------------------------------|--|---------------------------------|--|-------|---|-------------------------|---------------------|
| | | | CIL | Other | | | |
| | | | play areas, £100k each for the three neighbourhood play areas) | | | | |
| Storrington and Sullington | | | | | | | |
| Transport | Air Quality - possible changes to road network (e.g. changes to B2139 School Hill / High Street / Manleys Hill mini roundabout junction and / or closure of School Hill with traffic redirected via Old Mill Drive / Mill Lane | 2015 - 2025 | | | Air Quality Action Plan for Storrington and Pulborough (draft of Autumn 2010) | WSCC | CIL* |
| Transport | Air Quality - public transport improvement such as real time information at bus stops / mobile phone application | 2015 - 2025 | | | Air Quality Action Plan for Storrington and Pulborough (draft of Autumn 2010) | WSCC | CIL* |
| Social Infrastructure | Library Service - upgrading of facilities to meet increased demand from new developments | 2015 - 2031 | £60,000 | | West Sussex County Council | WSCC | CIL |

| Infrastructure Category | Scheme | Phasing / Priority for Delivery | Estimated Cost / Committed Funding | | Evidence document | Delivery Responsibility | How it will be paid |
|-------------------------|---|---------------------------------|--|-------|---------------------------------------|-------------------------|---------------------|
| | | | CIL | Other | | | |
| Community Facilities | Storrington & Sullington Play Facility improvements | | £400,000 (£50k for each of the two small play areas, £100k for each of the three neighbourhood play areas) | | Green Space Strategy | HDC | CIL |
| Community Facilities | 3G pitch | | £1,461,000 (£840k for pitch, £575k for 4 team changing pavilion, maintenance cost of £36k pa, excludes operating cost of pavilion) | | Open Space Sport and Recreation Study | HDC | CIL |
| Thakham | | | | | | | |
| Education | School Safety Zone - Thakeham First School | 2015-2031 | £10,000 | | West Sussex County Council | WSSC | CIL |
| Warnham | | | | | | | |
| Education | School Safety Zone - Warnham Primary | 2015 - 2013 | £10,000 | | West Sussex County Council | WSSC | CIL |

| Infrastructure Category | Scheme | Phasing / Priority for Delivery | Estimated Cost / Committed Funding | | Evidence document | Delivery Responsibility | How it will be paid |
|-------------------------|--|---------------------------------|------------------------------------|--|--|-------------------------|---------------------|
| | | | CIL | Other | | | |
| | School | | | | | | |
| Washington | | | | | | | |
| Education | School Safety Zone - St Mary's C of E First School | 2015-2031 | £10,000 | | West Sussex County Council | WSCC | CIL |
| West Chiltington | | | | | | | |
| Education | School Safety Zone - West Chiltington Community First School | 2015-2031 | £10,000 | | West Sussex County Council | WSCC | CIL |
| West Grinstead | | | | | | | |
| Transport | A24 between Ashington and Southwater - major junction improvement and gap closure scheme | Up to 2026 | | £50000 in 2012/2013; £120,000 in 2013/2014; £17,000 in 2014/2015 & £676,000 in 2015/2016 | West Sussex County Council - Forward Programme | WSCC | S106 |
| Education | School Safety Zone - Jolesfield Primary School | 2015 - 2031 | £10,000 | | West Sussex County Council | WSCC | CIL |
| District Wide | | | | | | | |
| Education | Education - contributions of | 2015 - 2031 | | £27-30 million | West Sussex County Council / | WSCC | CIL/S106 |

| Infrastructure Category | Scheme | Phasing / Priority for Delivery | Estimated Cost / Committed Funding | | Evidence document | Delivery Responsibility | How it will be paid |
|---------------------------------|---|---------------------------------|------------------------------------|-------|---|-------------------------|---------------------|
| | | | CIL | Other | | | |
| | £13,115 per head (Primary), £19,762 per head (Secondary) and £21,432 per head (6th Form) to be sought from new development across Horsham District to cater for expansions of primary, secondary and sixth form 'statutory school age' provision planned on a locality basis to meet the need of smaller developments. *Costs assume 5000 homes outside the strategic developments listed above. | | | | Horsham District Planning Framework | | |
| Social and Community Facilities | Improvements to existing Dryside Sport and Leisure Centres (Sports halls, activity halls, studios, sport | | £2.5 million | | PPG17 Sport England Facilities Planning Model | HDC/Community Partners | CIL |

| Infrastructure Category | Scheme | Phasing / Priority for Delivery | Estimated Cost / Committed Funding | | Evidence document | Delivery Responsibility | How it will be paid |
|-----------------------------------|---|---------------------------------|------------------------------------|-------|---|-------------------------|---------------------|
| | | | CIL | Other | | | |
| | specific areas, changing facilities and ancillary areas. (Equates to minimum of 6 badminton courts plus additional requirements)) | | | | | | |
| Social & Community Infrastructure | Improvements to existing Swimming Pool provision (Swimming pools, leisure waters, changing facilities and associated water treatment plant. (Equates to minimum of 280m2 of water space or 5-6 swimming lanes plus additional requirements)) | | £3 million | | PPG17 Sport England Facilities Planning Model | HDC/Community Partners | CIL |
| Social & Community Infrastructure | Improvements to Bowls Facilities (Outdoor flat greens, indoor bowls, short mat bowls) | | £200,000 | | Open Space Sport and Recreation Study | HDC | CIL |

| Infrastructure Category | Scheme | Phasing / Priority for Delivery | Estimated Cost / Committed Funding | | Evidence document | Delivery Responsibility | How it will be paid |
|-------------------------|---|---------------------------------|---|-------|---------------------------------------|--------------------------|---------------------|
| | | | CIL | Other | | | |
| Social and Community | Improvements to existing Health and Fitness Facilities (Exercise, gym work stations or equivalent. (equates to 160 exercise stations)) | | £350,000 | | Open Space Sport and Recreation Study | HDC / Community Partners | CIL |
| Green Infrastructure | Multi-functional green space 5.5sqm per person (per new resident) of strategic and sub-district MFGS | | £2.37 million (No of persons 27,000 Space req 148,000 Land Cost £25K per ha £25K x 14.8ha =£370,000 Layout costs £2M total = £2.37M) | | Open Space Sport and Recreation Study | HDC | CIL |
| Green Infrastructure | New seating in green spaces and recreation grounds - Seating | | £200,000 | | Green Space Strategy | HDC | CIL |
| Green Infrastructure | Green space infrastructure access | | £700,000 | | Green Space Strategy | HDC | CIL |

| Infrastructure Category | Scheme | Phasing / Priority for Delivery | Estimated Cost / Committed Funding | | Evidence document | Delivery Responsibility | How it will be paid |
|--------------------------------|--|---------------------------------|---|-------|--|-------------------------|---------------------|
| | | | CIL | Other | | | |
| | improvements - Access to the countryside improvements | | (£35k expected to be required each year x 20 £700k) | | | | |
| Social and Community | Parkour outdoor training area | 2017 | £150,000 | | Green Space Strategy, Open Space Sport and Rec Study | HDC | CIL |
| Social and Community | Parkour/Freestyle Gymnastics Indoor facility to accommodate Parkour/Freestyle Gymnastics with associated ancillary facilities | 2015-20 | £1m | | Local demand | HDC | CIL |
| Social and Community | Indoor Tennis 4 courts | | £500,000 | | Open Space Sport and Recreation Study | HDC | CIL |
| Transport | Cycle Schemes | 2015-2031 | | | | | CIL* |
| Transport | Real time bus display boards | 2015 - 2031 | | | | WSCC/Bus Providers | CIL* |
| Total CIL = £37,333,171 | | | | | | | |