

Our District



Horsham
District
Council

News from Horsham District Council
Summer 2020

**Thanks to our District's
volunteers** | Page 2

.....

**Exciting plans for a
greener Horsham** | Page 12

.....

**Next steps for our
Local Plan** | Page 11

.....

**Please
donate to our
Community Hub
COVID-19 Appeal** | Page 3

.....

 Follow us on Twitter @HorshamDC


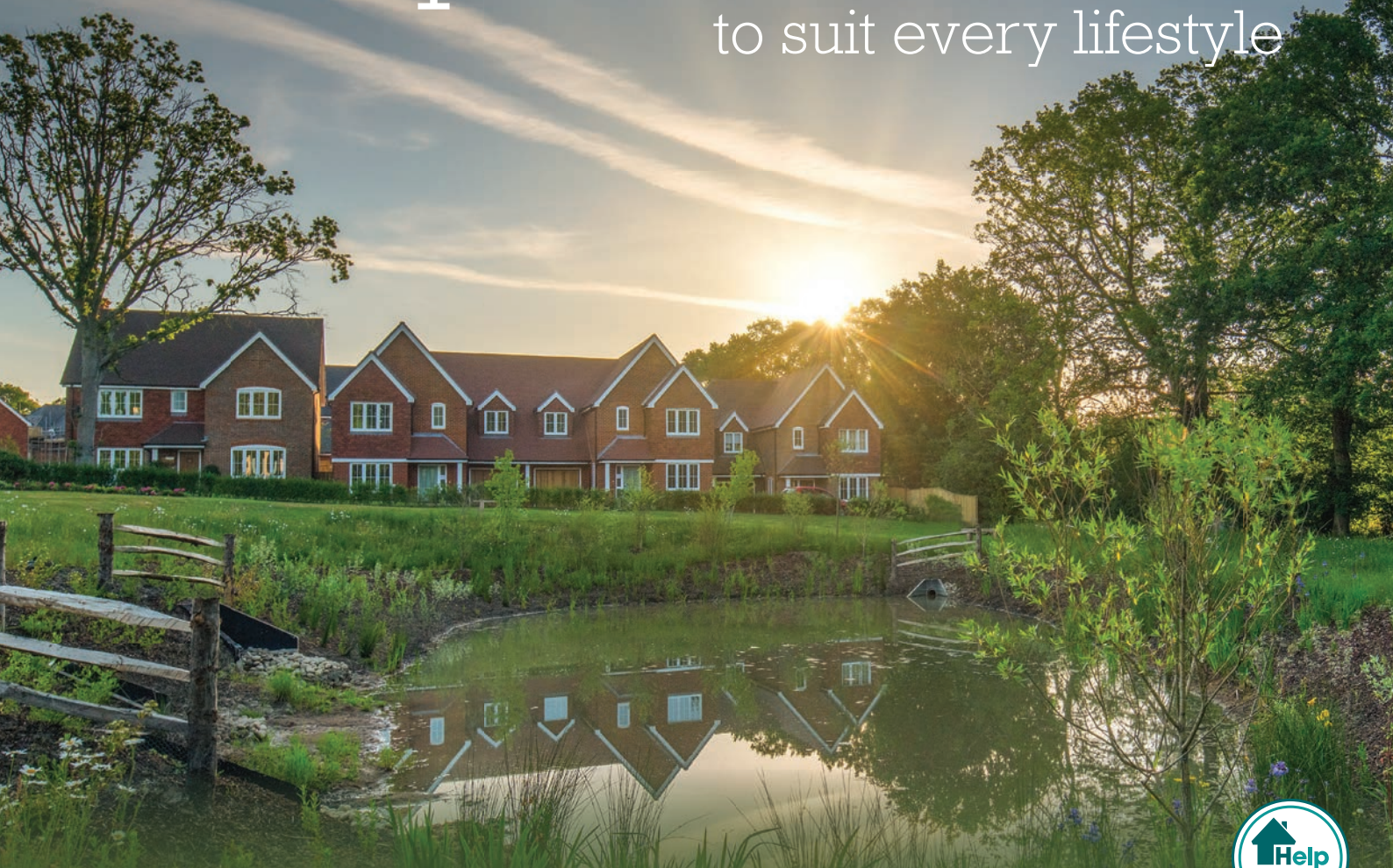
 Find us on Facebook/HorshamDC

Photo courtesy of West Chiltington and Nutbourne Volunteer Hub

Exceptional homes

to suit every lifestyle



Backed by HM Government

BOOK YOUR APPOINTMENT TO VISIT US THIS WEEKEND AND YOU COULD BE MOVING INTO YOUR BERKELEY HOME THIS SUMMER

BARLEYCROFT
RUDGWICK



Reach London in 51 minutes* by train
2, 3, 4 & 5 bedroom homes from £399,950*

📞 01403 885 722
🏠 barleycroft-rudgwick.co.uk
📍 Church Street, Rudgwick, West Sussex RH12 3ED
Sales Suite & Showhomes open daily, 10am - 5pm (Thursdays 12pm - 8pm)

BROADACRES
SOUTHWATER
WEST SUSSEX



Reach London in 51 minutes* by train
3, 4 & 5 bedroom homes from £495,000*

📞 01403 885 360
🏠 broadacres-southwater.co.uk
📍 Kensett Avenue, Southwater, Horsham, West Sussex RH13 9FF
Sales Suite & Showhomes open daily, 10am - 5pm (Thursdays until 8pm)

HIGHWOOD
Village



Reach London in 51 minutes* by train
1, 2, 3, 4 & 5 bedroom homes from £230,000*

📞 01403 885 292
🏠 highwoodvillage.co.uk
📍 The Boulevard, Horsham, West Sussex RH12 1FF
Sales Suite & Showhomes open daily, 10am - 5pm (Thursdays until 8pm)

THE PAPER YARD
HORSHAM



Reach London in 51 minutes* by train
Manhattan, 1 & 2 bedroom apartments from £200,000*

📞 01403 885 333
🏠 thepaperyard.co.uk
📍 Albion Way, Horsham RH12 1AH
Sales Suite coming soon

*Prices correct at time of going to press and subject to availability. **Travel times are approximate and are sourced from nationalrail.co.uk. Computer generated image is indicative only. Photography depicts Showhomes and Streetscene and is indicative only.

Welcome

Welcome to this edition of Our District magazine, sharing news and updates from Horsham District Council.

Never has it felt so important for us as a council to communicate with our residents than during these challenging times. Thank you for signing up to our email newsletters and visiting our website for updates.

In this edition we are sharing articles to highlight the support and advice available to residents and local businesses at this time, and how we have adapted our services to meet your needs. We are also sharing features on activities we will have to look forward to in the future.

It brings details of our district-wide Community Volunteer Hubs and how to contact them, as well as information about the financial support and practical help we have available to local businesses.

It also updates you on the progress of our Local Plan development, invites you to an online tour of our Horsham Museum and Art Gallery and brings details of our actions to reduce our carbon footprint and protect and enhance our District's local wildlife.

Please take care, look out for your neighbours, follow the government guidance and stay safe.

Councillor Ray Dawe

Leader of Horsham District Council



Helping local people to support local people	2
Help is at hand for local businesses during coronavirus crisis	4
Good causes reap the benefits from our lottery	7
Improved recycling rates during coronavirus period	8
Got loads of garden waste now that summer is here?	8
Looking to dispose of your DIY rubbish?	9
Public show of thanks touches the hearts of our waste collection crews	9
The Horsham District Local Plan 2019-2036	11
Unique new partnership to protect local wildlife	12
Creating a greener District	13
Horsham Museum & Art Gallery	14
Changing roles in response to crisis	15
Financial impact of coronavirus on the Council	15
Paying for parking couldn't be easier	15
Helping those who are sleeping rough	16
Do you know someone who would benefit from our Community Link service?	17
Employment programmes continue during the crisis	18
Many happy returns to Adopt-a-Street	20
Welcome to our new Chairman	21
Play areas refreshed with foxes and forests	21
Join up now for our free health and wellbeing advice	22
Keeping mentally healthy	23
Taking the democratic process online	24
Elections postponed until 2021	24
Horsham District councillors	25
Our District magazine goes digital	BC
Contact us	BC



Do let us have your feedback on any of the articles in this edition and let us know what you would like to read about in the future by emailing us at communications@horsham.gov.uk.

Helping local people to support local people

In response to the coronavirus outbreak, the Council, in partnership with existing and new organisations and volunteer groups, has actively put in place ways to help the District's most vulnerable people by establishing Community Volunteer Hubs.

We are extremely grateful to the many community groups, parish and town councils and social media groups who have worked so hard to help establish the Hubs throughout the District.

There are now some 27 Hubs in place, organised and manned by volunteers, giving practical help, such as going for essential food shopping and medicines, and providing emotional support, with a friendly phone call for those who are self-isolating at home, amongst many other things.

Since they were set up in March over 10,000 queries have been dealt with.

As part of this initiative, the Council's Community team called all of its 2,500 Community Link and Health and Wellbeing customers to establish their needs and reassure them at this time and we continue to call them regularly.

Commenting on this response for local level support, Horsham District Council Leader Cllr Ray Dawe said:

"I wish to extend my sincere thanks to the literally hundreds of our residents and community groups who have come forward to give their time to both help set up Hubs in their local areas, and to volunteer to help vulnerable people at this time. My thanks go out too to the Council's Community teams who worked tirelessly to pull this vital initiative together logistically with so little time to do it in.

"It is a heartrending time for many who are isolated either for their own safety, or the safety of others, and it is therefore greatly reassuring that so many volunteers have given and continue to give such vital help.

"I would still urge you to come forward if you feel you can spare your time to get involved."



How you can help

Please support our local volunteers who are working with the Hubs to buy and deliver essential food and medicines to the vulnerable who are self-isolating.

How to contact a Community Volunteer Hub near you

To get in touch with the Hubs please visit www.horsham.gov.uk/community/coronavirus-helping-the-elderly-and-vulnerable/contact-community-volunteer-hub.

Please only contact all the Hubs to request help if you are self-isolating.

Donate to the Horsham District COVID-19 Appeal and raise funds for local community volunteer hubs who are supporting vulnerable people during the coronavirus pandemic



“ Good to know that as I am home alone there is someone to rely on ”

“ The volunteer who does my shopping is an absolute angel ”

“ Thank you for ringing every week, it has helped me relax a lot – I am not on my own really ”

Any donations are really welcome.

To give £20 by mobile, just text HUBS to 70085. Texts cost £20 (the donation) plus one standard rate message.

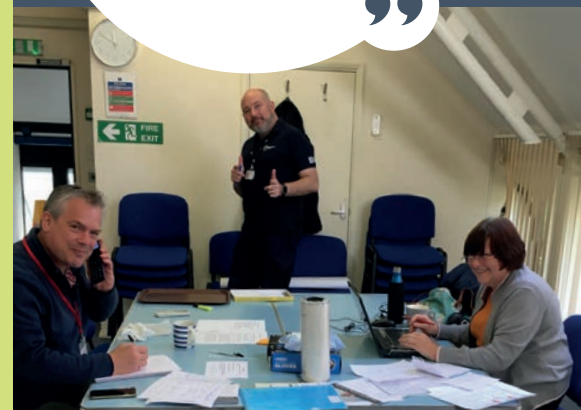


You can donate any amount online at www.horsham.gov.uk/covid19appeal.

Thank you to everyone who has made a donation so far – It really does make a big difference to the lives of local people who are being helped by local people.

If you have any queries or want more information please email covid-19.support@horsham.gov.uk.

Get in touch to volunteer at digital.horsham.gov.uk/outreach/coronavirusvolunteer.ofml.



Help is at hand for local businesses during coronavirus crisis

Throughout the outbreak the Council has been supporting local businesses in a variety of ways.

Funding where it is needed

We have supported thousands of local small businesses throughout the crisis, enabling them to benefit from business rate grant funds.

The grants were made available by the Government in response to the crisis but the application process and distribution of funds was managed by the Council.

Eligible small businesses in the Horsham District have received funds totalling some £25.9 million.

Other sources of support

Please check out the links below to further sources of business support which are also available on the Horsham District Council coronavirus and business support pages:

- Coronavirus menu:
www.horsham.gov.uk/coronavirus
- Business menu:
www.horsham.gov.uk/business
- Business rates pages:
www.horsham.gov.uk/business/business-rates
- Start or grow your business page:
www.horsham.gov.uk/business/start-or-grow-your-own-business



© Toby Phillips Photography

» Trading support for businesses

Throughout the pandemic the Council has adhered to government guidance and restrictions regarding the opening of and access to local retail outlets and businesses and will continue to support its local businesses based on this advice.

Our current focus is on supporting our businesses and enabling them to adapt to the changing economic environment.

We are running ongoing fortnightly surveys with local businesses to monitor impact and trends and provide appropriate support as needed.

How to trade differently

We have supported many traders in switching their distribution methods to online sales solutions such as takeaways, with click and collect and home delivery services.

We will continue to support the operation and development of www.essentialhorsham.online operated by Visit Horsham as a reliable online directory showcasing which businesses are open for trade, whether online or offline.

We are also introducing weekly interactive online business support sessions that will cover a range of topics, hosted by local business specialists. Topics planned include:

- Effective use of video and social media in the current environment
- Simple online order processing and payment options, and
- Re-opening your business safely.



Looking to the future

In preparation for post lockdown we are commissioning a new suite of photography of local attractions and businesses to ensure that we are well equipped to relaunch promotional campaigns for Discover Horsham District and local food and drink experiences and activities.

»
Nominate your favourite attractions for new Discover Awards
 »

We will be launching a brand new Discover Horsham District awards scheme across a range of categories. As residents who know our businesses and attractions the best, you will be invited to nominate your favourites. Look out for more news of how you can get involved in local media soon.

We invite all businesses to keep us informed about their plans, so we can support them as required and help to publicise their initiatives. Please email us at businessdevelopment@horsham.gov.uk.



CHRIST'S HOSPITAL

A SCHOOL LIKE NO OTHER

Transformation through education

Offering more fee assisted places
than other independent schools

T: 01403 246 555

E: hello@christs-hospital.org.uk

Christ's Hospital, Horsham,
West Sussex RH13 0LJ

www.christs-hospital.org.uk

Registered Charity No. 1120090



Good causes reap the benefits from our lottery

HORSHAM DISTRICT COMMUNITY LOTTERY

make good things happen!



Join up now

It's free to join, easy to sign up and every community group has the potential to raise vital funds for their work.

A community group that sells the target 50 tickets a year can raise in the region of £1,300.

For residents, everyone buying a ticket can choose which community group they want to support.

Tickets are priced at £1 each, with 60p in each pound going to support local good causes. Ticket buyers could win a range of prizes including a £25,000 jackpot!

Buy your ticket now for a chance to win **£25,000!**

Community groups and those wanting to buy tickets should visit www.horshamdistrictcommunitylottery.co.uk or call 01403 434010.

In September 2019 we set up the Horsham District Community lottery to help fund local good causes across the District.

The ethos of the scheme is all about benefiting charities, volunteer groups and not-for-profit organisations, enabling residents to support their communities.

A flying start

We are delighted that this new community lottery has proved really popular with over 900 players and 77 community groups signed up, and over 1,800 tickets sold since it launched.

Thanks to this level of interest the lottery is on target to raise **£56,000** for local good causes.

Here's what two local organisations have to say about the funds they have received:

Horsham based **Atlantis Swimming Club** is well established throughout West Sussex.

"We love the Horsham District Community Lottery because it lets our members play and creates a fun environment with the chance for them to win some cash!

"The funds we have received from the lottery invested in vital equipment for our swimmers and also allow us to develop our coaching team who support our swimmers to reach their full potential."

Age UK Horsham District provide high quality services for older people across our District.

"As a small independent charity fundraising is key to our survival. This lottery is great because it promotes our profile across the District, but also provides us with an income stream that helps keep our vital services running."



Supported by



Horsham District Council

Improved recycling rates during coronavirus period

Horsham District residents have achieved much improved recycling rates for the month of March 2020, since the start of the coronavirus outbreak.

Additionally, the quality of the recycling collected has dramatically improved with no recycling loads being rejected for poor quality throughout March, meaning that everything residents have put in their blue-topped bins will be reprocessed into new items.

The Council extends its thanks to all residents who have increased their levels of recycling, despite the difficulties they are facing during these troubling times.

Horsham District already has a very good track record for recycling, so to build upon this is excellent.

These recent achievements come after the Horsham District achieved a recycling rate of 53.5% for 2019, exceeding the 50% target that was set for 2020 ahead of time.

These results maintain our position as the best performing district for recycling across the whole of West Sussex and one of the top performers in the UK.



Remember, recycling needs to be clean, dry and loose in your bin. For tips to recycle more, check out our website at www.horsham.gov.uk/thinkbeforeyouthrow.

Are you thinking about how you can do more with reducing your waste? Home composting is a great way to ensure that green and organic kitchen waste doesn't end up in landfill. For a subsidised home composter please visit www.wastepreventionwestsussex.co.uk/composting.

Got loads of garden waste now that summer is here?

Sign up for great value garden waste collections.

As our thoughts turn to sprucing up our gardens, why not join our annual garden waste collection scheme?

All you need to do is pop your bin out on collection day. The service operates fortnightly. At just £41 a year it represents great value for money and is the cheapest garden waste collection service in West Sussex. Additional bins can be requested from just £31 per extra bin.



To find out more or sign up for collections visit www.horsham.gov.uk/bins/garden-waste or call us on 01403 733144.

**Just
£41 a year!**



Looking to dispose of your DIY rubbish?

Our new Bulky Bag could be the answer.

For that household rubbish that doesn't really need a skip, but is still too much to stick in the car and take to the tip, why not try our new Bulky Bag service?

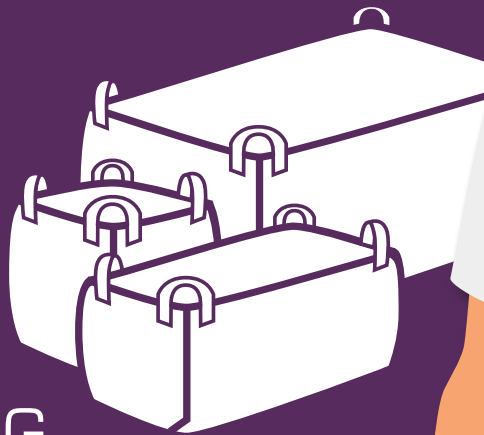
We can deliver you a Bulky Bag for all your refuse and pick it up within five working days when you are finished with it.

Perfect for house clearances, DIY home projects, garden waste, rubble and commercial waste.



With three sizes to choose from, there's a Bulky Bag to suit every job.

To find out more go to www.horsham.gov.uk/bulkybag or call us on 01403 739391.



Public show of thanks touches the hearts of our waste collection crews

A public outpouring of thanks for our collection crews, as they continue to do their vital work throughout the crisis, has touched the hearts of our team.

The Council wishes to thank local residents and businesses for the ongoing kindness they have shown to our crews as they complete their waste, recycling and green waste rounds across the district.

Crew members have received many posters, paintings, drawings, social media posts and cheery waves as they carry out their work and they really are very much appreciated.

Throughout the crisis, the Council's collections have continued without any disruption to service levels.



WE ARE still here FOR YOU

- Support through our response line
- Carer Contingency Planning
- Carer Assessments
- Practical guidance (including equipment and grants)
- Information provision

CARING FOR FAMILY AND FRIEND CARERS

CONTACT US TODAY TO FIND OUT MORE

Visit carerssupport.org.uk

Email info@carerssupport.org.uk

Call **0300 028 8888**



The Horsham District Local Plan 2019-2036

The Government requires all district councils throughout the country to produce a Local Plan to guide where housing development in their areas will go over a twenty year period. This has to be updated every five years. Horsham District Council is currently going through that revision process.

In February and March of this year, the Council published a draft of the revised Local Plan for public consultation. This document set out options of how the Council could meet the house build target set by Government. It also looked at other matters including biodiversity enhancements and more affordable housing.

Prior to the consultation, the Council's Leader, Cllr Ray Dawe, wrote to the Secretary of State responsible for housing seeking a review of what was considered an excessively high requirement for the numbers of new houses that the Council is expected to plan for. He queried why the use of yearly house-build target numbers of houses had seemingly replaced an ability to average them over several years to allow for short term differences in the rate of house building.

In the meantime, the Government announced the national lockdown in response to the Covid-19 pandemic. This has significant implications for everyone including Horsham District. The Council leadership believes it is important to ensure that the impacts of this pandemic are considered as part of the Local Plan process.

The Government has also responded to the letters from Cllr Dawe. In those they have stated that they expect Local Planning Authorities to continue to prepare Local Plans. There has been no change to the Government guidance that once a Local Plan reaches five years of age they are considered 'out of date'. This means that in November, when our current Local Plan reaches five years of age, our housing target will increase from 800 to an unprecedented 965 homes each year.

As a result, despite the challenges of Covid-19, it is very important that we continue to prepare our Local Plan as quickly as possible. Without a new Local Plan we could find ourselves finding refused housing applications being granted on appeal. This could result in unplanned development and limit the level of supporting infrastructure which can be provided.

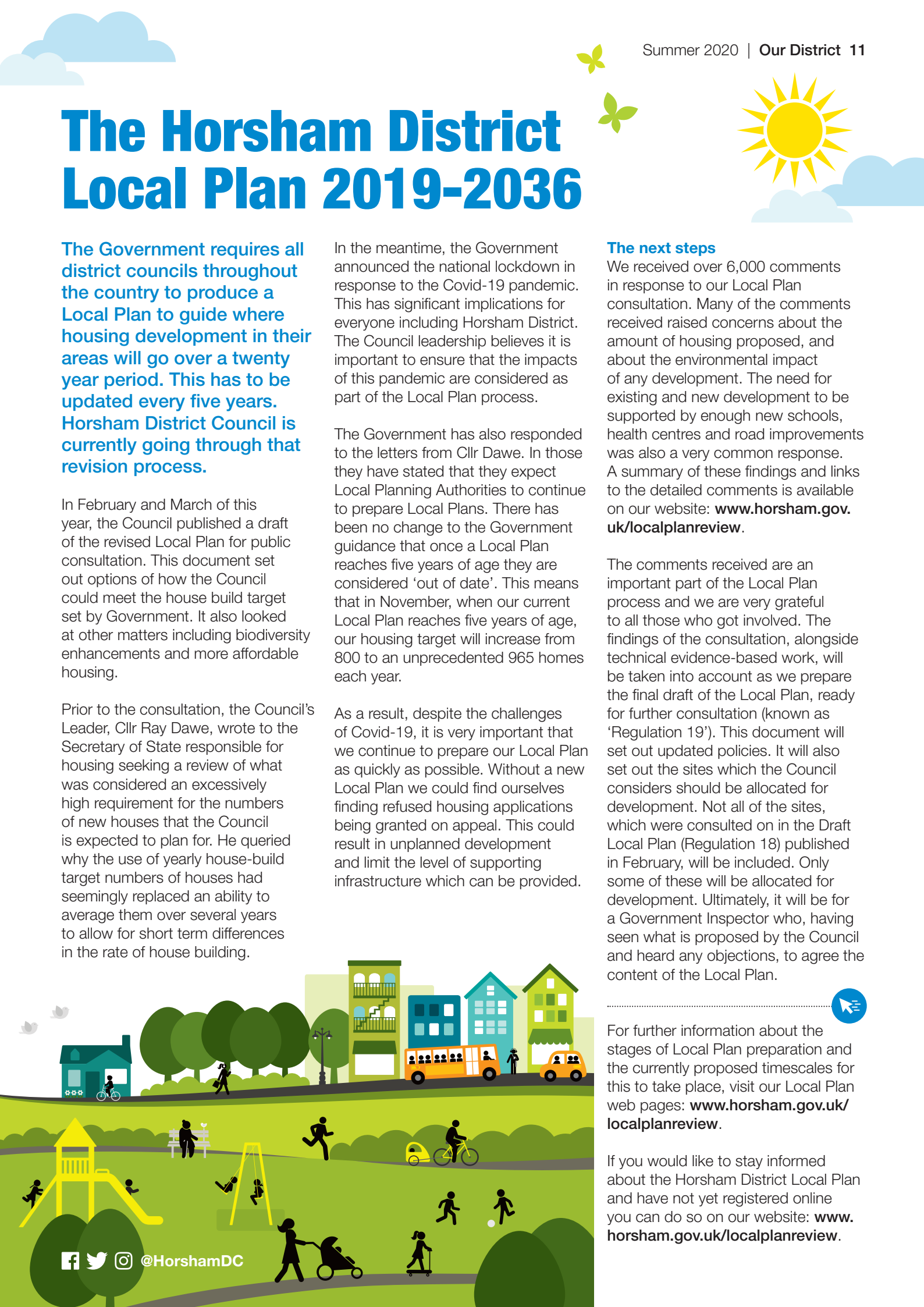
The next steps

We received over 6,000 comments in response to our Local Plan consultation. Many of the comments received raised concerns about the amount of housing proposed, and about the environmental impact of any development. The need for existing and new development to be supported by enough new schools, health centres and road improvements was also a very common response. A summary of these findings and links to the detailed comments is available on our website: www.horsham.gov.uk/localplanreview.

The comments received are an important part of the Local Plan process and we are very grateful to all those who got involved. The findings of the consultation, alongside technical evidence-based work, will be taken into account as we prepare the final draft of the Local Plan, ready for further consultation (known as 'Regulation 19'). This document will set out updated policies. It will also set out the sites which the Council considers should be allocated for development. Not all of the sites, which were consulted on in the Draft Local Plan (Regulation 18) published in February, will be included. Only some of these will be allocated for development. Ultimately, it will be for a Government Inspector who, having seen what is proposed by the Council and heard any objections, to agree the content of the Local Plan.

For further information about the stages of Local Plan preparation and the currently proposed timescales for this to take place, visit our Local Plan web pages: www.horsham.gov.uk/localplanreview.

If you would like to stay informed about the Horsham District Local Plan and have not yet registered online you can do so on our website: www.horsham.gov.uk/localplanreview.



Wilder HORSHAM DISTRICT



Children at Chesworth Farm
© Miles Davies, Sussex Wildlife Trust

Unique new partnership to protect local wildlife

Many people will be aware that wildlife and the natural world is at risk, all across our planet. But here in our corner of South East England the same threats and challenges exist for our wildlife.

As a council, we recognise that though we may have wildlife jewels in our Horsham District crown, our natural environment is under threat, and that many species that were once familiar in the Horsham District are now rare or threatened. A new partnership, aims to reverse this decline, creating new habitats and networks for species in the District.

In early 2020, the Council forged an ambitious and exciting new five year partnership with the Sussex Wildlife Trust, to work with local people, landowners and community groups in the District to create networks for wildlife, helping local wildlife species and habitats thrive. This is the first project of its kind in the South East.

This new project is called 'Wilder Horsham District'. Rather than just focusing on protected sites and species, the approach aims to ensure that wildlife throughout the District benefits and that it is able to move from one site to the next through a mosaic of habitats.

What action can be taken?

The work with residents, community groups and landowners will focus on:

- **Hedgerows** – in the Low Weald area to build connectivity between separated habitats
- **Woodland** – new planting and allowing natural regeneration to capture more carbon and help wildlife thrive
- **Freshwater and floodplain habitats** – improving water quality and flood resilience in the River Adur catchment area
- **Ecological network** – to be created by joining up key sites such as the Knepp Estate, woodland to the north east of Horsham town and The Mens in the west of the District
- **Pollinating insects** – reverse their decline by increasing the habitats for these species across the District.

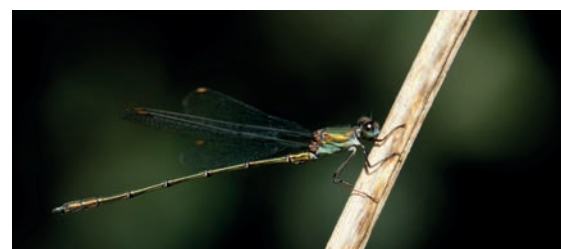
None of this work can happen without the support of people throughout Horsham District, from landowners, to parish groups, or individuals, and we look forward to involving lots of residents in this work.

The proposed partnership supports the Council's recently published Corporate Plan for 2019 to 2023, which sets out one of its major ambitions to prioritise the protection of our environment as we move to a carbon neutral future.

Chief Executive of Sussex Wildlife Trust Tor Lawrence said:

"Sussex Wildlife Trust is thrilled to be entering this partnership.

"We applaud the Council for recognising the current global ecological crisis and identifying that this really is a priority at a local level."



Willow Emerald Damselfly
© James Duncan, Sussex Wildlife Trust



Sussex
Wildlife Trust



Horsham
District
Council

Sussex Wildlife Trust
Registered Charity No 207005

www.horsham.gov.uk

Creating a greener District

We all have a part to play in tackling climate change.

Whether you are increasing your recycling, switching off more lights or repairing your clothes or tools, it all helps towards the bigger picture.

In June 2019 the Council committed to reducing its carbon footprint and started to work towards the national target of becoming carbon neutral as an organisation.

The good news is that we are making great progress to achieving these goals and taking better care of our environment, whilst reducing costs.



we did

We have now completed a comprehensive carbon audit which was undertaken with the Carbon Trust; nationally recognised experts in reducing carbon and saving energy for non-profit making organisations.

The key finding of the audit was that the total carbon footprint for the Council in 2018/19 was 18,035 tCO₂e.

The majority of this carbon footprint comes from:

- The goods and services that the Council buys from external suppliers
- Heating and lighting the buildings that we own but lease out to other organisations
- The fuel that is used to heat and power our buildings and run our vehicles.

We have already

- Improved the energy efficiency of our buildings – we have recently upgraded Horsham Museum & Art Gallery with a more energy efficient power supply and a digitally controlled heating system
- Built new Council developments to high environmental standards – our new Piries Place Car Park has won awards for its energy efficiency and includes electric vehicle charge points as well as a green wall
- Introduced some electric vehicles into our fleet and a more energy efficient fleet of waste collection vehicles
- Switched to a renewable energy tariff
- Increased biodiversity in our parks and green spaces; such as enhancing areas of heathland which is great at absorbing carbon.

we will

The Council has a solid track record in caring for the environment and reducing emissions. Now that we know where our carbon is being generated, we want to set a realistic target for when the Council will become carbon neutral. This will be backed by a measurable and costed action plan to achieve this. This is likely to include:

- Increasing the number of electric vehicles in our fleet
- Changing our buildings' heating supplies to all electric, as the national electricity grid is increasingly being powered by renewable and nuclear energy
- Improving the energy efficiency of our buildings, such as changing to LED lighting and increasing insulation
- Installing renewable technology.

If you have any queries about our carbon emissions work please email helen.peacock@horsham.gov.uk.



Piries Place Car Park with its 14.5 metre high "living wall", increasing biodiversity in Horsham Town Centre

Horsham Museum & Art Gallery



Explore the rich history of our District at the touch of a button

Horsham Museum & Art Gallery may be closed at the moment but our amazing Heritage team are still bringing you all its wonderful exhibits and treasures to enjoy from the comfort of your own homes.

Check out their videos, photos and the superb virtual tour of the whole museum as they celebrate **#MuseumFromHome**.

Take a virtual tour

With our virtual tour you can take a stroll around all the rooms and galleries of the Museum & Art Gallery. Select which floor you'd like to see first then wander the cabinets and exhibits at your own pace with no crowds to bother you. Zoom in on your favourite paintings and specimens.

Check out the doll's house model of the museum (*left*) to help you decide where you want to go. Don't forget to virtual stroll outside into the beautiful courtyard garden as it bursts into summer.



Go to **www.horshammuseum.org/virtual-tour**. Enjoy your trip!

A fantastic donation marking the end of war in Europe

Timed perfectly for the VE Day commemorations, Horsham Museum & Art Gallery was delighted to receive the exceptionally generous donation of an original Constable sketch depicting a rural scene, including trees and a barn.

This remarkable donation has an extraordinary story that goes back 76 years to the middle of World War II and has special links to Horsham.

During the war leading museums and art galleries remained open including Agnews, the leading Old Master gallery in London. At this time, watercolours were seen as quintessentially English. And which artist represented Englishness better than any other? Constable of course. So it was, that in the months



before D-Day, Agnews held their 71st exhibition featuring drawings taken from the Constable Sketchbook.

A leading watercolour artist and teacher Vincent Lines, The Head of Horsham School of Art, who had been employed as part of the Recording Britain project, bought the pencil sketch for five guineas at this time and brought it to his home in Horsham.

Today, some 76 years later, it is being donated by his family to Horsham Museum & Art Gallery and will feature in the forthcoming World War II exhibition.

We are immensely proud to receive this significant work as a wonderful addition to our watercolour collection. We look forward to the re-opening of the museum when people can come along and enjoy it.

Changing roles in response to crisis

Many members of the Council's staff have been redeployed from their usual responsibilities to help support critical roles during the coronavirus crisis.

Dozens of staff have helped to set up the Community Volunteer Hubs, manning phone lines and making calls to offer help and reassurance to thousands of vulnerable residents throughout the District.

Additionally, a number of staff have been redeployed to our frontline Customer Services team and to our Hop Oast depot to ensure the frequency and quality of our Waste and Recycling collection services to the public.

Many colleagues across the Council are now working from home and doing their best to deliver all our key services to support our residents and businesses in these challenging times.

Financial impact of coronavirus on the Council

Like so many of our residents and businesses, Horsham District Council has suffered financially from the COVID-19 lockdown.

As Horsham District lost all its grant funding from central Government over recent years and retains only 4% of the business rates and 8% of the Council Tax it collects, we have come to rely heavily on income we make from our properties, such as from rents and car parks. With shops closed and our businesses struggling, we gave rent relief to our tenants where it was right to do so. With so many residents working from home we opened our car parks for free. Like many other investors, returns on our financial investments have also fallen.

As a result of this we find we are currently losing around £750,000 a month in income. We are also paying out more on essential services needed at this time such as housing rough sleepers and running the Community Volunteer Hubs.

Our mid-range estimate of our losses this year is £6million, but it could be as much as £8million, or 70% of the money that funds our services.

Horsham District has received some funding from the Government to help, but it's currently only 25% of our expected losses.

A prudent council like us does have money saved for a rainy day and we will survive. But we will have to seriously consider the services we can afford next year, whilst continuing to support our communities with the services they need.

Paying for parking couldn't be easier

There are now more convenient ways to pay for your parking without having to use cash or cards.

Setting up a Horsham parking autopay account means you won't have to search out a pay and display machine or worry about having the right change. The online account is for use in our three ANPR multi-storey car parks, Pines Place, Swan Walk and Forum in Horsham. Sign up now at www.horsham.gov.uk/parking/autopay.

Additionally, you can choose to pay by using the RingGo smartphone app. RingGo is available in all our town centre pay and display car parks. The RingGo location numbers are listed on the maps on our website, as well as on the pay and display signs in our car parks.

For more details about RingGo please visit www.horsham.gov.uk/parking/horsham-town-centre-parking.



Helping those who are sleeping rough

It is always troubling to see anyone sleeping rough on our streets. What many of us don't realise is that the needs and circumstances surrounding those who sleep rough, either by choice or not, can be extremely varied and complex.

Thankfully our dedicated Homeless team have the experience to help with this highly specialised area and have put in place a number of services to directly help these vulnerable individuals.

Our team has developed a number of solutions to engage with rough sleepers in our District:

- We offer a homelessness advice service from 9am - 5pm every weekday. Due to the restrictions placed upon us during the Covid-19 lockdown, we have adapted our service to ensure it continues to run smoothly and we are speaking to those in need over the phone in the first instance in order to prevent and relieve homelessness.

Alternatively enquiries can be made online by visiting our dedicated web page and registering **horsham.housingjigsaw.co.uk/accounts/account/register**.

- We continue our partnership working with Turning Tides, Horsham Matters, Horsham Churches Together, our Neighbourhood Wardens and partners across the District helping those at risk of becoming homeless, with the aim of preventing homelessness in the first place.
- Our Homelessness Outreach Service (operated by Turning Tides) works tirelessly to locate, support and signpost those who are sleeping rough or are insecurely housed, providing a tailored service to those in need.



How you can best help rough sleepers

Many of our District's residents are really generous towards people who they believe to be homeless, however, it is important that this generosity is diverted to the most appropriate channels to ensure that any donations are used most effectively.

People wishing to support the homeless are urged to donate to charities rather than giving money directly to individuals, however tempting this may seem, as this assures those most in need receive the right help in the right way and it helps to break the cycle of homelessness.

If you are concerned about someone sleeping rough in England or Wales, you can highlight them using the StreetLink website: **www.streetlink.org.uk**. The details provided are sent to the Council's Homeless Outreach team to help us to locate the individual and connect them to support.

Private Landlord Services – we need your property

Do you own a property to let in the Horsham District or surrounding areas?

Would you benefit from:

- a no fee lettings service
- free tenancy support
- a consistent supply of suitable new tenants?

Horsham District Council recognises the significant role private sector landlords can play in meeting

housing needs in the District, and as such we have a dedicated team to help get the best from your rental property.

To discuss letting your property with us call Nigel Powell on **01403 215225** or **07734 231018**.

Alternatively you can email the team at **horshampis@horsham.gov.uk**.



Do you know someone who would benefit from our Community Link service?

What is Community Link?

Community Link is an award-winning service that helps residents across the Horsham District feel safe and independent, by providing them with a variety of technology enabled care products now known as TEC (Technology Enabled Care).

Service adapted due to coronavirus

Throughout the coronavirus crisis the Community Link service is continuing uninterrupted.

Our advisers have adapted their way of working to do initial assessments over the phone and they can still visit homes to install equipment, whilst observing social distancing and adhering to government guidance on PPE.



Photograph taken in November 2019

The products on offer

You may already know of the service's Lifeline unit and pendant (red button), but did you know the Community Link team can provide over 200 different technology-based products to meet a broad range of customer needs? Some of the popular products they offer are:

- **Footprint** – a location tracking device which can be carried by anyone including; those living with dementia, those with mobility impairments, walkers or lone workers. The device can summon help to their location.
- **Falls detection sensor** – there are a variety of different technologies that can be used for this, however all have the same goal, to automatically summon help should a fall occur, without the user pressing the button. Advisors can help assess the need for this equipment.

- **Epilepsy Sensor** – there are several technologies that can be provided, depending on what is most appropriate. The sensor alerts a nominated person that the user is having a seizure.

Community Link Services Manager Emma said:

“At this time, with so many people self-isolating as a result of coronavirus, it has never been more crucial to help keep our vulnerable residents safe, especially as so many are home alone.”

If you, or someone you know, could benefit from the Community Link service please call **01403 215230** or email **community.link@horsham.gov.uk**.

“
This is exactly
the help we were
looking for
”

“
It gives both
me and my family
peace of mind
”

For a no obligation demonstration or to find out more, please call **01403 215230** or email us at **community.link@horsham.gov.uk**. Alternatively, please complete the coupon here and send to: **Community Link, Horsham District Council, PO Box 106, Horsham, RH12 1BR. Licence No. SEA 6963**

Name

Address

Postcode Telephone No.





WORKSHOPS

CVs AND SUPPORT

ADVICE & GUIDANCE

JOB SEARCH

COACHING

CONFIDENCE

Help for local job hunters continues during the crisis

Journey to Work (J2W) and Work Information and Support Hubs (WISH) are Horsham District Council's successful employment programmes.

Both are now working closely to offer remote support to people who need help. Despite the challenges of Covid19, we are still offering:

- Personal employment support and mentoring
- Benefits and careers advice and guidance
- CV and work skills development
- Job search assistance
- Interview support (in particular for online, video and telephone interviews)

Ask for the support you need

If you are currently receiving employment benefits, then check with your Job Centre Advisor to see if you can access the programmes. If you don't receive benefits but would like some support, please contact:

- Lesley (J2W) on **01403 215262** or email lesley.beauvoisin@horsham.gov.uk, or
- Richard (WISH) on **07783 222956** or email wish@setas.org.uk.

For weekly WISH bulletins with loads of great tips and advice about getting ready for work, keeping active and mentally well, and finding that all important job, visit the SETAS website and check out the bulletin drop-down list at the top of the page www.setas.org.uk/wish-bulletins.

For a list of current jobs please visit www.setas.org.uk/wish-job-clubs/wish-live-vacancies.



ADVERTISEMENT



Tools Wanted

Do you have unwanted carpentry or engineering tools in your shed, garage, or workshop?

I'll purchase all hand tools and workshop equipment you no longer use or require.

CALL NIGEL ON 01903 816600

Other items of interest: old books, postcards, model toys inc. Dinky & Corgi, watch & clock-making equipment, automobilia, military items, cameras, etc. If it's an entire collection or just a couple of bits, please contact me.

ALL tools considered

Journey to Work programme puts Sarah on road to success

Journey to Work has, over a six year period, helped hundreds of local people back into work.

The Council's Employment Support Development Officer, Lesley Beauvoisin, works with job seekers to renew their confidence, improve their employability skills and give them valuable work experience to get them into paid employment and on the road to work success.

In January of 2020, Sarah Champniss, who found herself unemployed after a company restructure, approached the Council about the Journey to Work programme, as despite going to lots of interviews, she was still struggling to secure a new job after six months.

Sarah picks up the story:

"I went along to the Job Centre in Horsham and met Richard Brook who manages the Council's successful job club – the Work Information and Support Hub (WISH). He was really supportive. As I was getting the interviews but not any job offers, I considered becoming self-employed and Richard organised me a place at the Pop-up Business School which is a week-long self-employment training course.

"I thoroughly enjoyed and benefitted from the course which covered areas such as sales and marketing, social media, tax and insurance and examining the actual business ideas people wanted to focus on.



Lesley Beauvoisin (left) with Sarah Champniss (right)

"After completing the course we were all given a mentor for 12 months and we meet up as a support group every two weeks which is really useful to avoid feelings of isolation.

"I did feel that having a physical disability counted against me at job interviews.

"Then a part-time work experience opportunity came up at the Council in the Property and Facilities team which I took up. I am both building on previous skills and learning new skills which is great. I have also set up my own business which I run on a part-time basis.

"I think the Journey to Work programme is amazing and I would definitely recommend it. I had no idea there was so much valuable help available which is free to access via the Council."



If you are interested in trying out this programme, please ask your Job Centre Coach or contact the Council's Lesley Beauvoisin, Employment Support Development Officer, by calling 07917 594002, or email her at lesley.beauvoisin@horsham.gov.uk.

Many happy returns to Adopt-a-Street

No one likes the unsightly scene of litter. That's why some five years ago the Council launched a litter clearing initiative, encouraging residents to literally "adopt their street" and the Adopt-a-Street campaign was born.

We realised that we needed an army of volunteers to do their bit and help us to pick up the mess that was being dropped by others.

From a standing start in 2015 we now have an incredible 4,500 volunteers who regularly give up their time to litter pick and take extra care of their street or an area which they particularly value near them.

Still going strong

Back in the spring of 2015 we visited a couple of our very first volunteers Trish Hampton and Roger Smith from Storrington and we are delighted to say that they are still regularly litter picking today.



The success of the Adopt-a-Street scheme has seen many different volunteers come forward to help keep their communities clean and tidy from all walks of life: Scout groups, schoolchildren, retirees and young families.

The new kids on the block

One of our newest recruits is the Smith family from Horsham. Adam Smith, his wife Olgi and their two children Freya and Jacob joined up in early 2020. Here's what they have to say:

"When we welcomed our first family dog Ruby we all started going out for walks more.

"And that's when we realised just how much litter was being dropped and left around the woodland near our home. Initially we bought our own litter pickers and called the Council's Street Cleansing team to dispose of all the litter we collected – then we signed up and joined the Adopt-a-Street scheme.

"As a family we generally collect two large sacks of rubbish every outing. Our kids really enjoy it and won't go out without their litter pickers now!"

Freya said: "Litter picking saves wildlife from getting damaged."

Jacob added: "I like picking litter – it's like hide and seek with litter."



We would like to extend a very warm thank you to all our volunteers for the great work you continue to do – here's to the next five years!



Welcome to our new Chairman

Cllr Karen Burgess was elected as the new Chairman of Horsham District Council at an online Annual General Meeting on 20 May.

She takes over the position from Cllr Kate Rowbottom having performed the role of Vice Chairman for the past civic year. Cllr David Skipp was elected Vice Chairman for 2020/21.

Commenting on her appointment at the helm of the Council Cllr Burgess said:

“Thank you to my fellow Councillors for nominating and voting for me as Chairman of Horsham District Council for this year.

“I am deeply honoured to have been chosen for this role and feel I will be standing on the shoulders of giants, strong local politicians, especially the ladies who have all played a key part in making our District a wonderful place to live.

“This year the initial celebrations are somewhat muted as a result of the coronavirus outbreak, but rest assured that once the restrictions are lifted, I will look forward to representing the Council and meeting as many local people as possible at community events. In the meantime please do stay alert and avoid risking the spread of the virus.”

Play areas refreshed with foxes and forests

Two play areas in the District have had a fun and colourful refresh.

Foxholes in Rudgwick was transformed in March with exciting new play features inspired by the area’s name. New play equipment includes a springy fox and fox den multi-play unit which has a foxhole tunnel, climbing net and slide. A carved owl keeps watch over the play area, which also has inclusive equipment – a spinner and nest swing.

Further north in Horsham, a small play area in Wren Close has been given a rainforest-themed makeover. The site features a forest tree unit with slide, rock wall and large climbing frame inspired by a spider’s web.

A toucan keeps watch over a springy see-saw and forest nest swing, which is suitable for a wide range of children with different physical abilities. A large snake slithers on the ground between the play features and another tactile snake climbs into the forest.

At the time of going to print, our play areas are closed due to Government guidance. We look forward to opening them again soon.



Join up now for our free health and wellbeing advice

It's never been more important to look after your health, both physically and mentally.

That's why our health and wellbeing advisors are on hand to help you meet your health and fitness goals, making their help and advice available to you, whilst we all play our part in reducing the spread of Covid-19.

Check out our new 'at home' service

Whilst we can't offer face to face appointments, our team are still here to offer tailored advice, support and motivational interviewing just as before.

Support is available for things like:

- losing weight
- healthy eating
- getting fitter
- dealing with stress
- stopping smoking
- reducing alcohol intake.

Joining our new virtual classrooms is easy

Starting in June, we created a number of virtual classrooms for our group courses so you can still benefit from the support of a group of like-minded individuals and take advantage of our knowledgeable course leaders who will offer lots of advice, useful hints and tips.

Courses include Prediabetes workshops for those who are at risk of developing Type 2 Diabetes as well as our new Weight Off Workshops.

New Weight Off Workshops

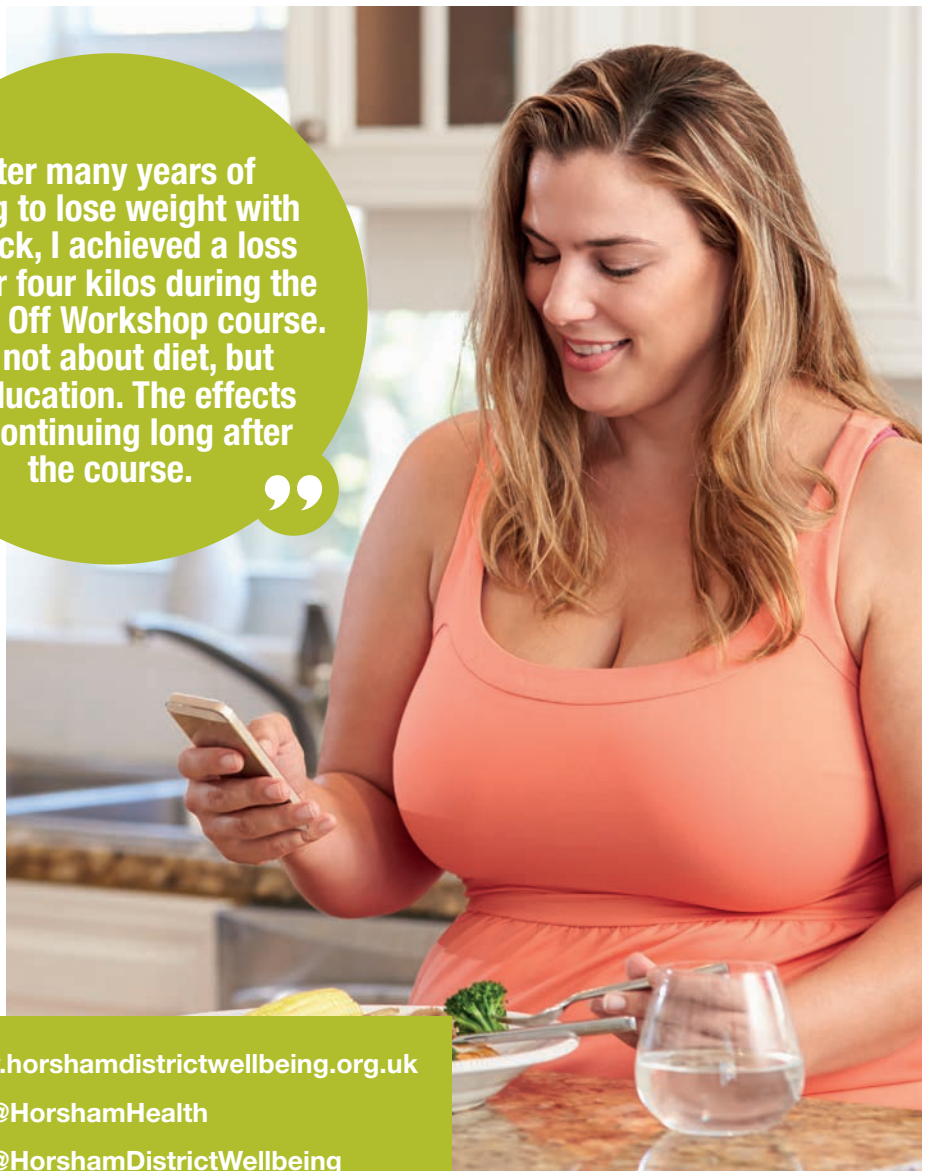
Over 12 weeks the Weight Off Workshops focus on weight loss, healthy eating and physical and emotional wellbeing. You will learn strategies to help you change habits and behaviours to live a healthier lifestyle, for the duration of the course and beyond.

Sign up now

Anyone can access our free Health and Wellbeing services, as long as you live or work in the Horsham District and are aged 18 or over. To find out more or book an appointment you can call **01403 215111**, email **info@horshamdistrictwellbeing.org.uk** or fill out a contact form online here: **www.horsham.westsussexwellbeing.org.uk/contact-us**.

“After many years of trying to lose weight with no luck, I achieved a loss of over four kilos during the Weight Off Workshop course. It's not about diet, but re-education. The effects are continuing long after the course.”

Weight Off Workshop



Keeping mentally healthy

The lockdown can also take its toll on us all mentally.

We recommend these helpful websites which contain a wealth of topics. Check them out.

The NHS Every Mind Matters website contains a range of useful information on wide ranging mental health issues: www.nhs.uk/oneyou/every-mind-matters.

On our own website we also have links to all the main mental health organisations: www.horsham.gov.uk/community/health-and-wellbeing/mental-health-support-services.



Start your journey to a beautiful lawn

PRICES FROM
£15*
PER TREATMENT

Our bespoke seasonal treatments contain nutrients to feed the lawn - supporting root development an encouraging stronger, more robust grass plants - and a herbicide to control weeds. Our late-autumn treatment also contains a moss control element.



Additional treatments

- SlowMow - our innovative product which slows grass growth - means less mowing
- Oasis - helps to maintain water at the root zone. Great for dry lawns and/or periods of low rainfall
- Aeration and scarification - the most effective tools to defeat moss - essential annual work

For your FREE lawn analysis
Call 01273 491099 or
email haywardsheath@greenthumb.co.uk

greenthumb.co.uk *Based on a lawn size up to 40'



THE
denture
SHOP

Dentures to get you smiling again



NEW DENTURES
DENTURE REPAIRS
HOME VISITS
FREE CONSULTATIONS
FREE ANNUAL CHECK UPS
01403 210616

We specialise in making, fitting and repairing high quality natural looking dentures with premium craftsmanship and exceptional after care.

Free on-site parking. 48 Station Road, Horsham, RH13 5EY
www.thedentureshop.com



Private Hire
24 Hour Service For All Occasions
PRE-BOOKING ONLY
WEB/APP/PHONE

01403 242424



www.aaa2bcars.co.uk
bookings@aaa2b.co.uk



Executive Cars Available
8 Seater Minibuses
CREDIT CARD BOOKINGS ACCEPTED

Taking the democratic process online

One of the biggest challenges in Local Government when social distancing and lockdown measures were introduced was managing the democratic process safely and lawfully.

Public meetings, including Full Council, Cabinet and Planning Committee, take place regularly and it's our duty and legal obligation to ensure they are as accessible to the public as they would be normally.

The online conferencing solution that the Democratic Services team developed is working well. All meeting attendees sign in to the video-conferencing platform Zoom, and the meeting event is streamed live on the Council's YouTube channel.

- Meeting attendees are able to raise their hand to ask questions in the meeting
- Votes are done by asking each member in turn whether they agree or not, as they would be in person
- If a councillor has connectivity issues and misses a portion of the discussion about an issue, they are excluded from voting on that particular issue.

Democratic Services Manager David Penrose said: "It's great that the public are now able to watch our meetings live on the internet. While councillors are happy to attend the meetings from home, I think we all miss the traditional format of being in the same room together."

Visit www.youtube.com/horshamdc to watch Council meeting videos.



Elections postponed until 2021

Following government guidelines, all elections and referendums due to be held from April 2020 have been postponed to May 2021.

Elections Manager Claire Hawken commented:

"We are expecting the beginning of 2021 to be a very busy election period, as there could be many varieties of elections that have to take place then. Elections to take place so far include the Police and Crime Commissioner elections, County Council elections and neighbourhood referendums."

Of course this could all change again as the Government has indicated that the situation will be kept under review.

If deemed necessary, we could see social distancing measures introduced at polling stations. Voters may decide to register for postal or proxy votes rather than attend a polling station.



To apply for a postal or proxy vote, please visit our website, call **01403 215581** or email elections@horsham.gov.uk.

Horsham District councillors

Billingshurst

Cllr Chris Brown (Conservative)
Telephone: 01403 741542
chris.brown@horsham.gov.uk

Cllr Nigel Jupp (Conservative)
Telephone: 01403 741542
nigel.jupp@horsham.gov.uk

Cllr Kate Rowbottom (Conservative)
Telephone: 01403 741770
kate.rowbottom@horsham.gov.uk

Bramber, Upper Beeding and Woodmancote

Cllr Michael Croker (Green)
Telephone: 01903 813178
michael.croker@horsham.gov.uk

Cllr Roger Noel (Conservative)
Telephone: 01273 494421
roger.noel@horsham.gov.uk

Broadbridge Heath

Cllr Matthew Allen (Liberal Democrat)
Telephone: 07783 471311
matthew.allen@horsham.gov.uk

Cllr Louise Potter (Liberal Democrat)
Telephone: 01403 253088
louise.potter@horsham.gov.uk

Colgate and Rusper

Cllr Tony Hogben (Conservative)
Telephone: 01403 269963
tony.hogben@horsham.gov.uk

Cllr Liz Kitchen (Conservative)
Telephone: 01293 871441
elizabeth.kitchen@horsham.gov.uk

Cowfold, Shermanbury and West Grinstead

Cllr Jonathan Chowen (Conservative)
Deputy Leader and Cabinet Member for Leisure and Culture
Telephone: 01403 710634
jonathan.chowen@horsham.gov.uk

Cllr Lynn Lambert (Conservative)
Telephone: 07854 042484
lynn.lambert@horsham.gov.uk

Denne

Cllr Ruth Fletcher (Liberal Democrat)
Telephone: 01403 258830
ruth.fletcher@horsham.gov.uk

Cllr Frances Haigh (Liberal Democrat)
Telephone: 01403 253 652
frances.haigh@horsham.gov.uk

Cllr Belinda Walters (Liberal Democrat)
Telephone: 07808 779408
belinda.walters@horsham.gov.uk

Forest

Cllr Colin Minto (Liberal Democrat)
Telephone: 07887 480142
colin.minto@horsham.gov.uk

Cllr Godfrey Newman (Liberal Democrat)
Telephone: 01403 211154
godfrey.newman@horsham.gov.uk

Cllr David Skipp (Liberal Democrat)
Vice Chairman
Telephone: 07818 671404
david.skipp@horsham.gov.uk

Henfield

Cllr Mike Morgan (Independent)
Telephone: 01273 492134
mike.morgan@horsham.gov.uk

Cllr Josh Potts (Conservative)
Telephone: 07834 196520
josh.potts@horsham.gov.uk

Holbrook East

Cllr Andrew Baldwin (Conservative)
Telephone: 01403 275156
andrew.baldwin@horsham.gov.uk

Cllr Karen Burgess (Conservative)
Chairman
Telephone: 01403 273533
karen.burgess@horsham.gov.uk

Holbrook West

Cllr Peter Burgess (Conservative)
Cabinet Member for Horsham Town
Telephone: 01403 273533
peter.burgess@horsham.gov.uk

Cllr Christian Mitchell (Conservative)
Telephone: 07710 402115
christian.mitchell@horsham.gov.uk

Itchingfield, Slinfold and Warnham

Cllr Stuart Ritchie (Conservative)
Telephone: 01403 270988
stuart.ritchie@horsham.gov.uk

Cllr Tricia Youtan (Conservative)
Cabinet Member for Community and Wellbeing
Telephone: 01403 790669
tricia.youtan@horsham.gov.uk

Nuthurst and Lower Beeding

Cllr Toni Bradnum (Conservative)
Telephone: 01403 891181
toni.bradnum@horsham.gov.uk

Pulborough and Coldwaltham and Amberley

Cllr Paul Clarke (Conservative)
Cabinet Member for Local Economy
Telephone: 01798 875645
paul.clarke@horsham.gov.uk

Cllr Brian Donnelly (Conservative)
Telephone: 01798 874101
brian.donnelly@horsham.gov.uk

Cllr Diana van der Klugt (Conservative)
Telephone: 01798 875663
diana.vanderklugt@horsham.gov.uk

Roffey North

Cllr Anthony Bevis (Liberal Democrat)
Telephone: 01403 264894
anthony.bevis@horsham.gov.uk

Cllr John Milne (Liberal Democrat)
Telephone: 07939 669435
john.milne@horsham.gov.uk

Roffey South

Cllr Alan Britten (Liberal Democrat)
Telephone: 01403 272226
alan.britten@horsham.gov.uk

Cllr Roy Cornell (Conservative)
Telephone: 01403 260960
roy.cornell@horsham.gov.uk

Rudgwick

Cllr Richard Landeryou (Conservative)
Telephone: 01403 824154
richard.landeryou@horsham.gov.uk

Southwater North

Cllr Billy Greening (Conservative)
Telephone: 07963 820622
billy.greening@horsham.gov.uk

Cllr Claire Vickers (Conservative)
Cabinet Member for Planning and Development
Telephone: 01403 732094
claire.vickers@horsham.gov.uk

Southwater South and Shipley

Cllr Gordon Lindsay (Conservative)
Telephone: 01403 741577
gordon.lindsay@horsham.gov.uk

Cllr Ian Stannard (Conservative)
Telephone: 01403 250394
ian.stannard@horsham.gov.uk

Steyning and Ashurst

Cllr Tim Lloyd (Conservative)
Telephone: 01903 816969
tim.lloyd@horsham.gov.uk

Cllr Bob Platt (Green)
Telephone: 07876 365715
bob.platt@horsham.gov.uk

Storrington and Washington

Cllr Ray Dawe (Conservative)
Leader of the Council and Cabinet Member for Finance
Telephone: 01903 741671
ray.dawe@horsham.gov.uk

Cllr Jim Sanson (Conservative)
Telephone: 01903 744658
jim.sanson@horsham.gov.uk

Trafalgar

Cllr Christine Costin (Liberal Democrat)
Telephone: 01403 266165
christine.costin@horsham.gov.uk

Cllr Leonard Crosbie (Liberal Democrat)
Telephone: 01403 269746
leonard.crosbie@horsham.gov.uk

West Chiltington, Thakeham and Ashington

Cllr John Blackall (Conservative)
Telephone: 01798 812432
john.blackall@horsham.gov.uk

Cllr Philip Circus (Conservative)
Cabinet Member for Environment, Recycling and Waste
Telephone: 01798 812719
philip.circus@horsham.gov.uk

Cllr Jack Saheid (Conservative)
Telephone: 01798 813007
jack.saheid@horsham.gov.uk

Correct at June 2020

Our District magazine goes digital

In this unprecedented time it has never been more important for councils to communicate effectively with a broad range of people, from residents and at risk groups to businesses and community organisations.

We are developing a new electronic version of Our District magazine. The new format will provide a new way for people to keep up to speed with everything that is going on, discover more about our services and share content with family and friends easily.



Want to know more? Find out when it is live by registering for email updates at:

www.horsham.gov.uk/stayconnected.

You can already view the magazine online as a PDF. Visit www.horsham.gov.uk/ourdistrict to read all the past editions.

Contact us

Community Link
01403 215230

Electoral Services
elections@horsham.gov.uk
01403 215126

Environmental Health
publichealth.licensing@horsham.gov.uk
01403 215641

Housing
General enquiries
housing@horsham.gov.uk
01403 215204

National Benefit Fraud Hotline
0800 854 4400

Council Tax, business rates and benefits
08081 648610

Licensing
licensing@horsham.gov.uk

Alcohol licensing
01403 215578

Hackney carriage private hire licensing
01403 215471

Parking
parking@horsham.gov.uk
01403 215058

Pest Control Treatments
01403 215411

Planning Services
Development Management
General enquiries
planning@horsham.gov.uk
01403 215187

Building Control
General enquiries and helpline
building.control@horsham.gov.uk
01403 215151

Recycling and Bins
Including trade waste, litter, garden waste, cleansing and dog fouling
yoursay@horsham.gov.uk
01403 733144

For all other general enquiries
contact@horsham.gov.uk
01403 215100

Leisure facilities
Billingshurst Leisure Centre
01403 787500

The Bridge Leisure Centre
01403 211311

The Capitol, Horsham
01403 750220
www.thecapitolhorsham.com

Horsham Drill Hall
01403 211436

Horsham Park Barn bookings
01403 756088

Horsham Museum & Art Gallery
01403 254959
www.horshammuseum.org

The Pavilions In The Park
01403 219200

Rookwood Golf Course
01403 252123

Southwater Country Park
01403 731218

Steyning Sports and Swimming Centre
01903 879666

Visitor Information Centre
01403 211661
www.horshamvisitor.co.uk

Warnham Local Nature Reserve
01403 256890

Follow us
@HorshamDC



www.facebook.com/HorshamDC



www.linkedin.com/company/horsham-district-council

