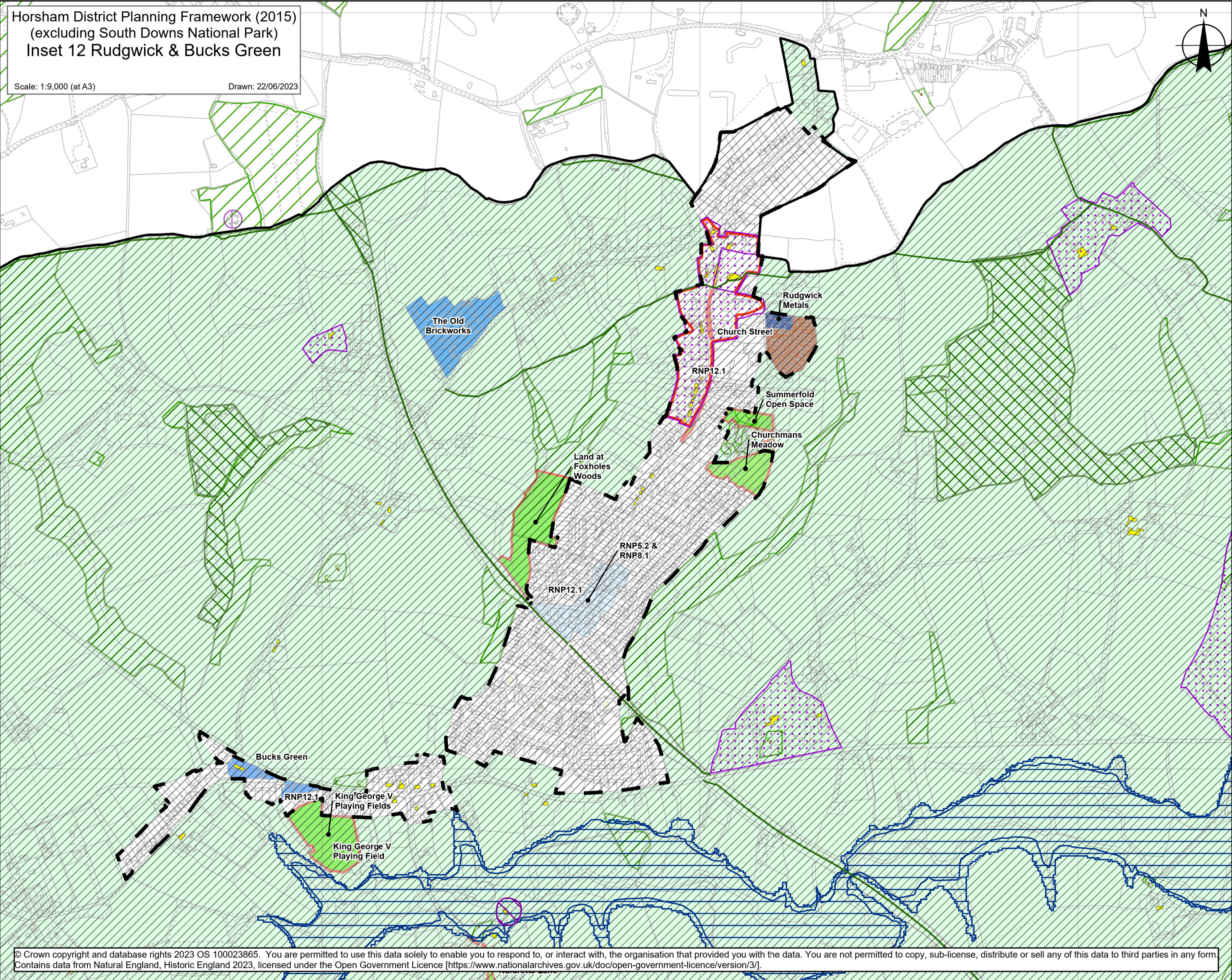


Horsham District Planning Framework (2015)
(excluding South Downs National Park)
Inset 12 Rudgwick & Bucks Green

Scale: 1:9,000 (at A3) Drawn: 22/06/2023



- Rudgwick Neighbourhood Plan**
- Important Local Facilities: Policy RNP12.1 – Jubilee Hall
 - Important Local Facilities: Policy RNP12.1 – King George V Playing Field
 - Important Local Facilities: Policy RNP12.1 – Parade of Shops, Rudgwick
 - Important Local Facilities: Policy RNP12.1 – Pennthorpe School
 - Important Local Facilities: Policy RNP12.1 – Rudgwick Chapel
 - Important Local Facilities: Policy RNP12.1 – Rudgwick Hall
 - Important Local Facilities: Policy RNP12.1 – Rudgwick Medical Centre
 - Important Local Facilities: Policy RNP12.1 – Rudgwick Primary School
 - Important Local Facilities: Policy RNP12.1 – Scout Hut / Pre-School
 - Local Green Space: Policy RNP16.1 Haven Road & Naldretts Lane Open Spaces
 - Local Green Space: Policy RNP16.1 – Church Street
 - Local Green Space: Policy RNP16.1 – Churchmans Meadow
 - Local Green Space: Policy RNP16.1 – King George V Playing Fields
 - Local Green Space: Policy RNP16.1 – Land at Foxholes Woods
 - Local Green Space: Policy RNP16.1 – Summerfold Open Space
 - Parish Employment Area: Policy RNP10 – Bucks Green
 - Parish Employment Area: Policy RNP10 – Rudgwick Metals
 - Parish Employment Area: Policy RNP10 – The Old Brickworks, Lynwick Street
 - Village Centre: Policy RNP5.2 Housing Density & Policy RNP8.1 Development Height